



# Demographic, Social, and Economic Trends of Richfield Residents: 1980-2007

---

Presented by the  
Hennepin South Services Collaborative  
September 1, 2009



# Introduction

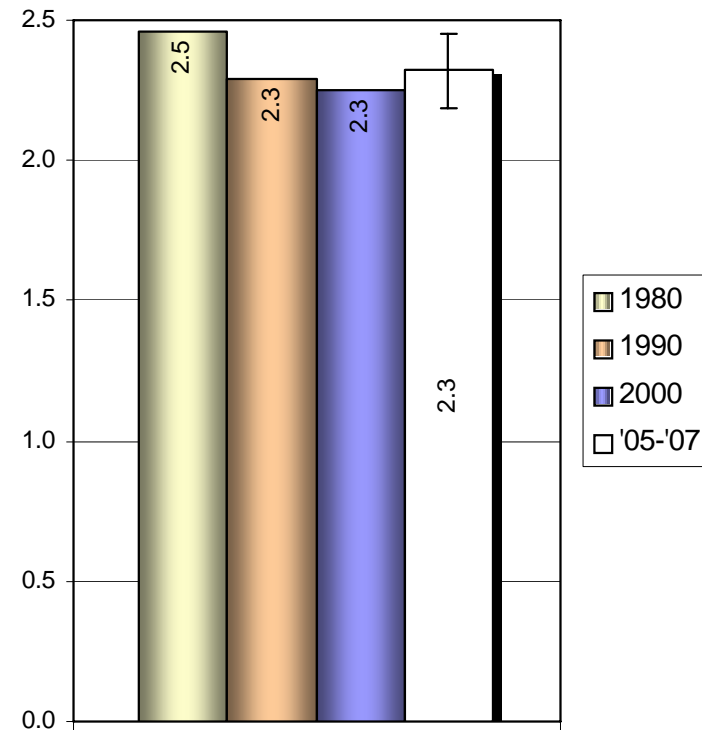
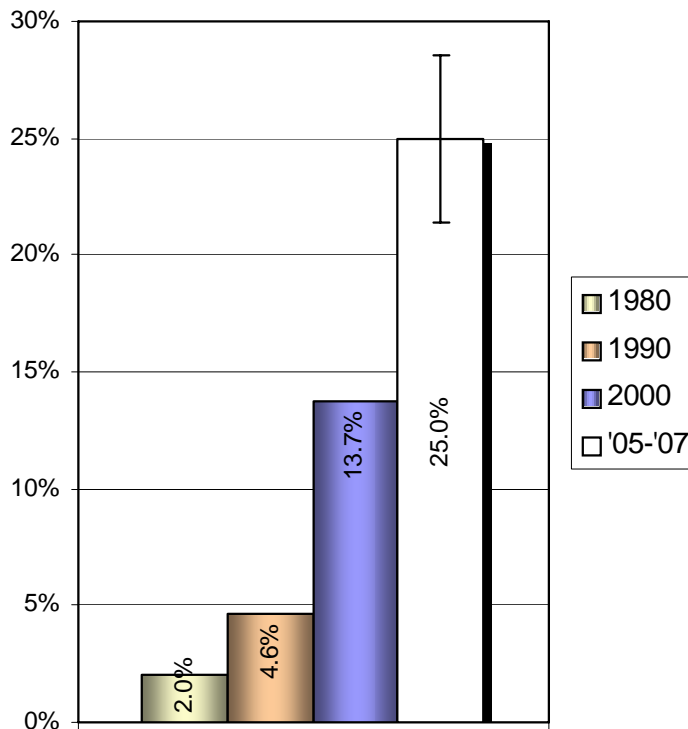
---

- Sources of data
  - 1980, 1990 & 2000 U.S. Census
  - 2005-2007 American Community Survey (ACS)

	<b>Census</b>	<b>ACS</b>
frequency	<ul style="list-style-type: none"><li>■ every 10 years</li></ul>	<ul style="list-style-type: none"><li>■ every year since 2000</li><li>■ 1-year datasets since 2005 and 3-year dataset of 2005-2007</li></ul>
coverage	<ul style="list-style-type: none"><li>■ short form – <u>every</u> household*</li><li>■ long form – 1 out of 6 households</li></ul>	<ul style="list-style-type: none"><li>■ 3 million households</li></ul>
data	<ul style="list-style-type: none"><li>■ actual counts</li></ul>	<ul style="list-style-type: none"><li>■ estimates with margins of error</li><li>■ 3-year datasets have averages</li></ul>

# Introduction (cont.)

Example of data points falling inside and outside the margin of error



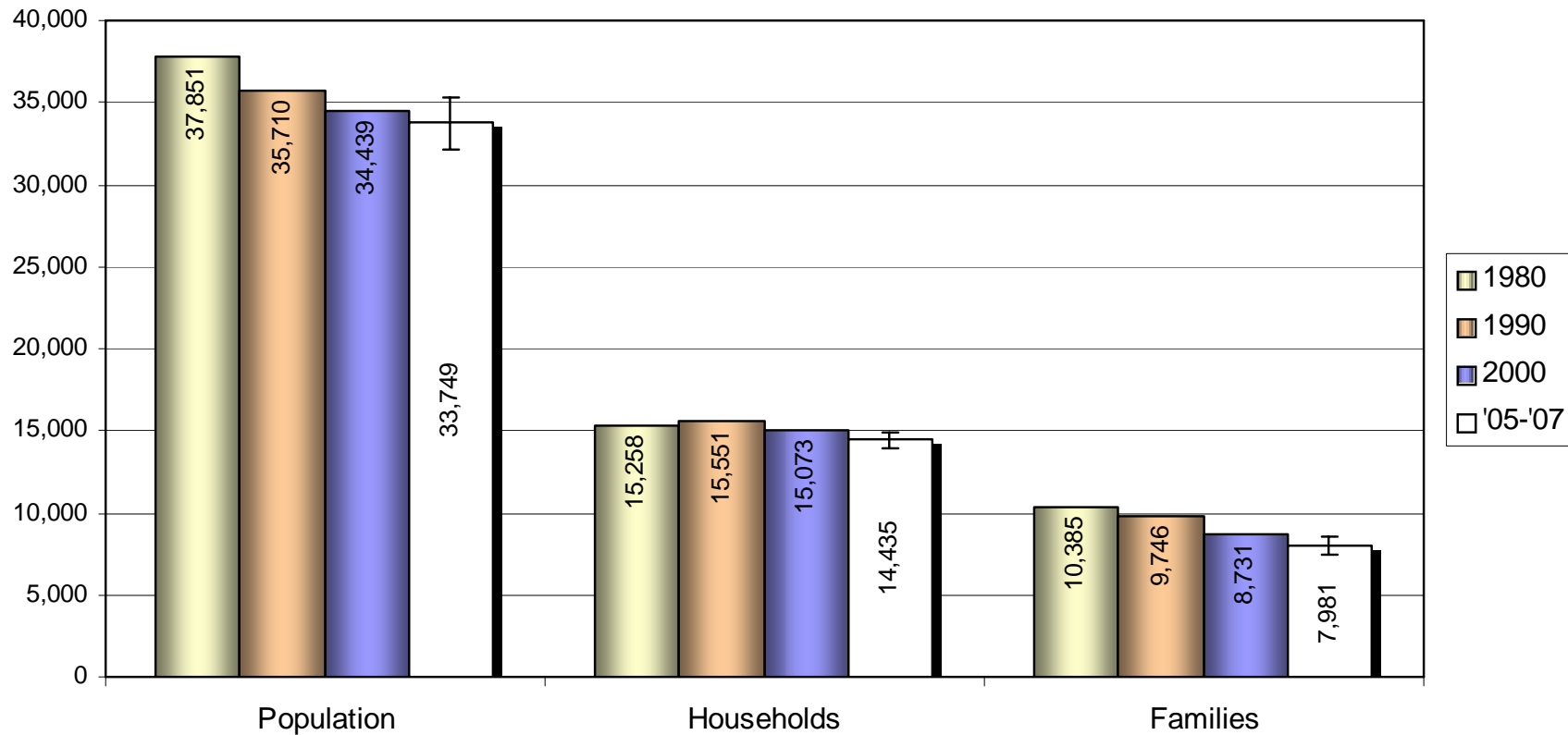


## Introduction (cont.)

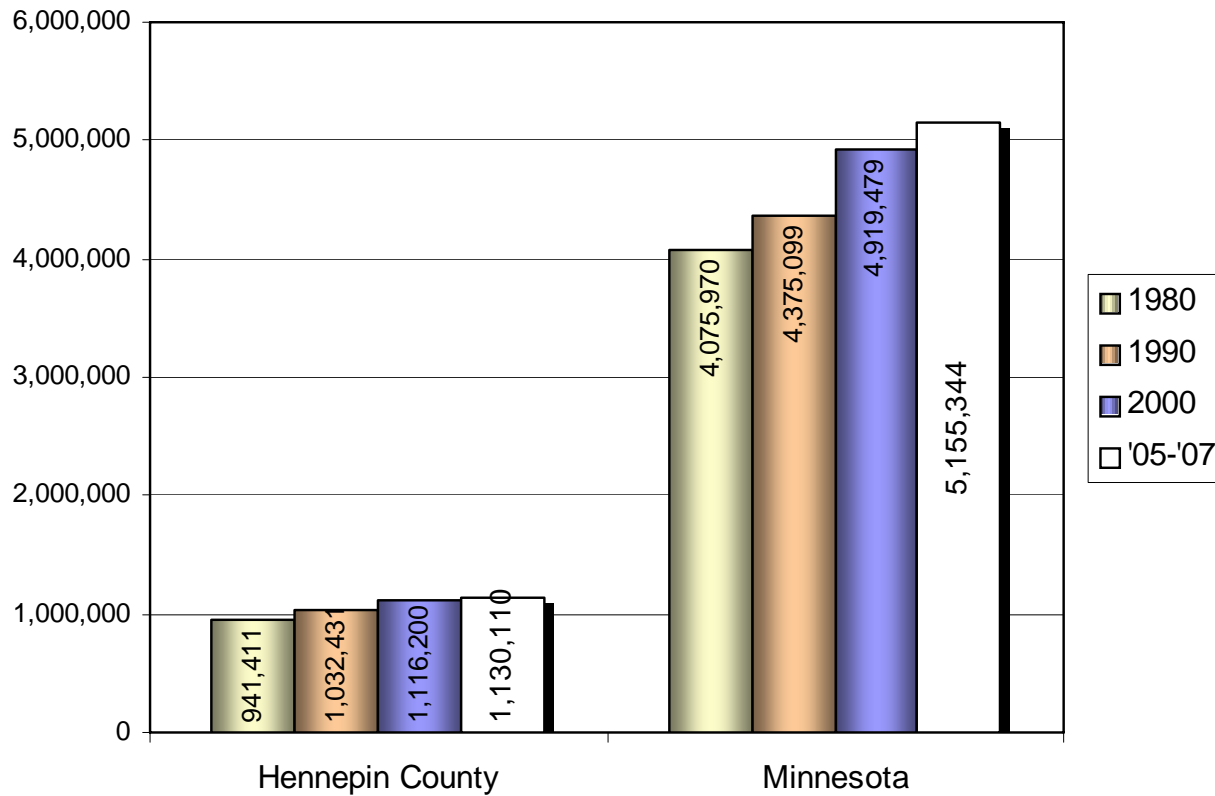
---

- Limitations of data
  - self-reported – unverified; dependent on memory
  - voluntary – non-reporting; undercounting
  - sample – smaller populations; influenced by “outliers”
- Intent/purpose of report: sourcebook of descriptive data trends; not “needs assessment”
- Definition section in report

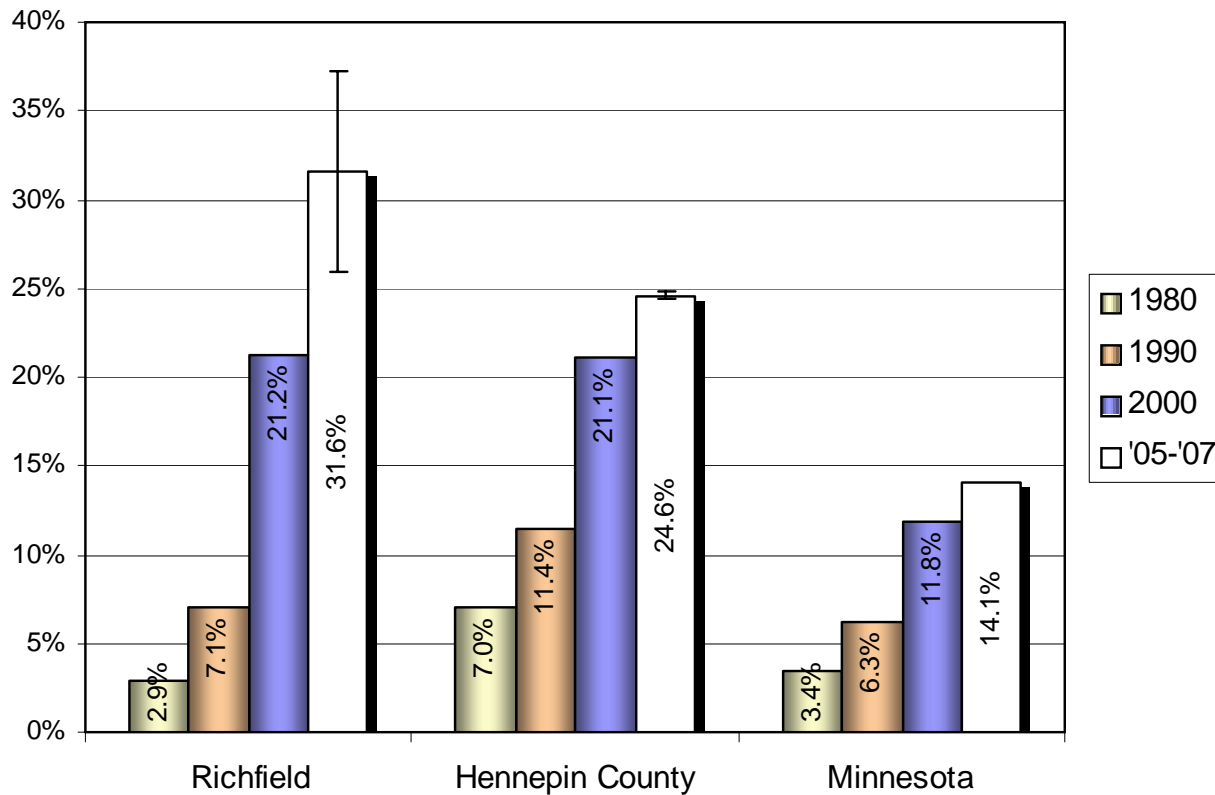
# Population, Households, and Families



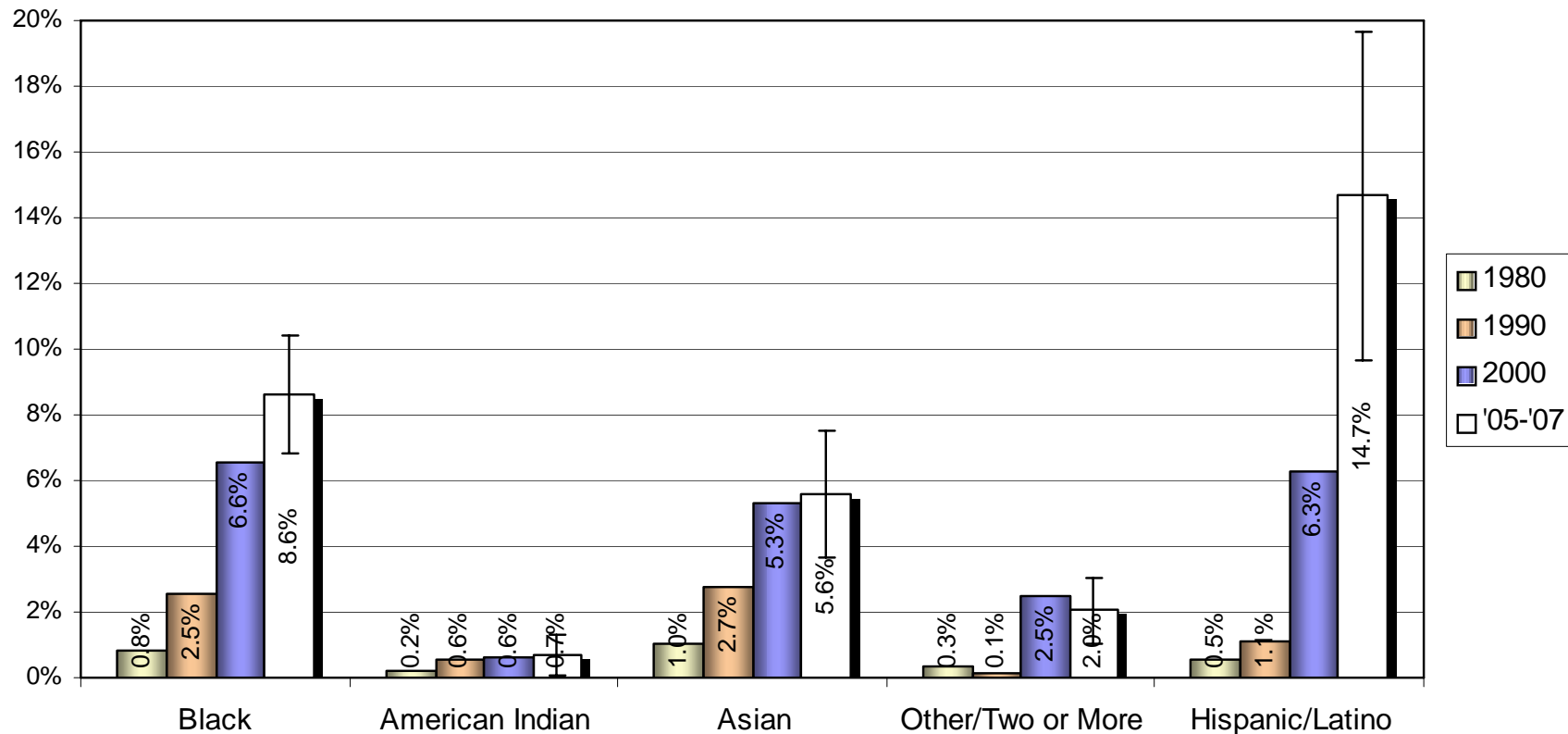
# Population comparisons



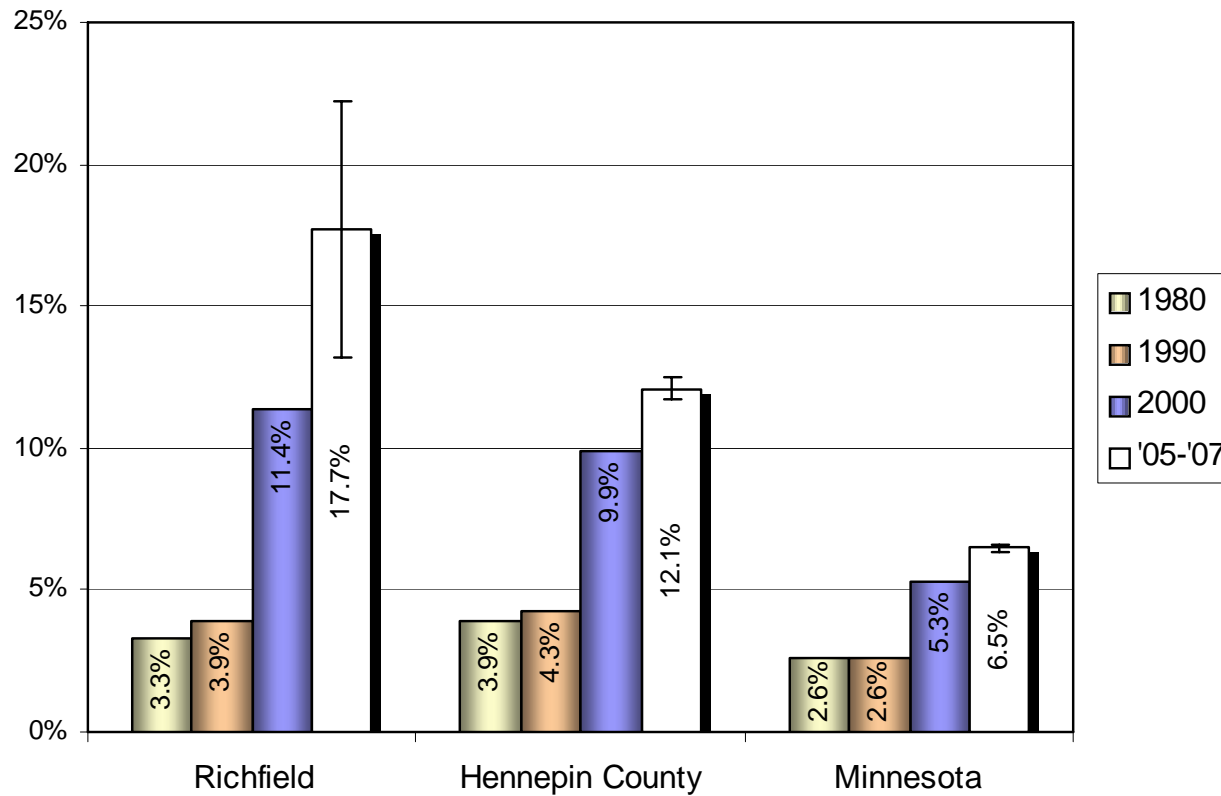
# People of color as a percentage of the population



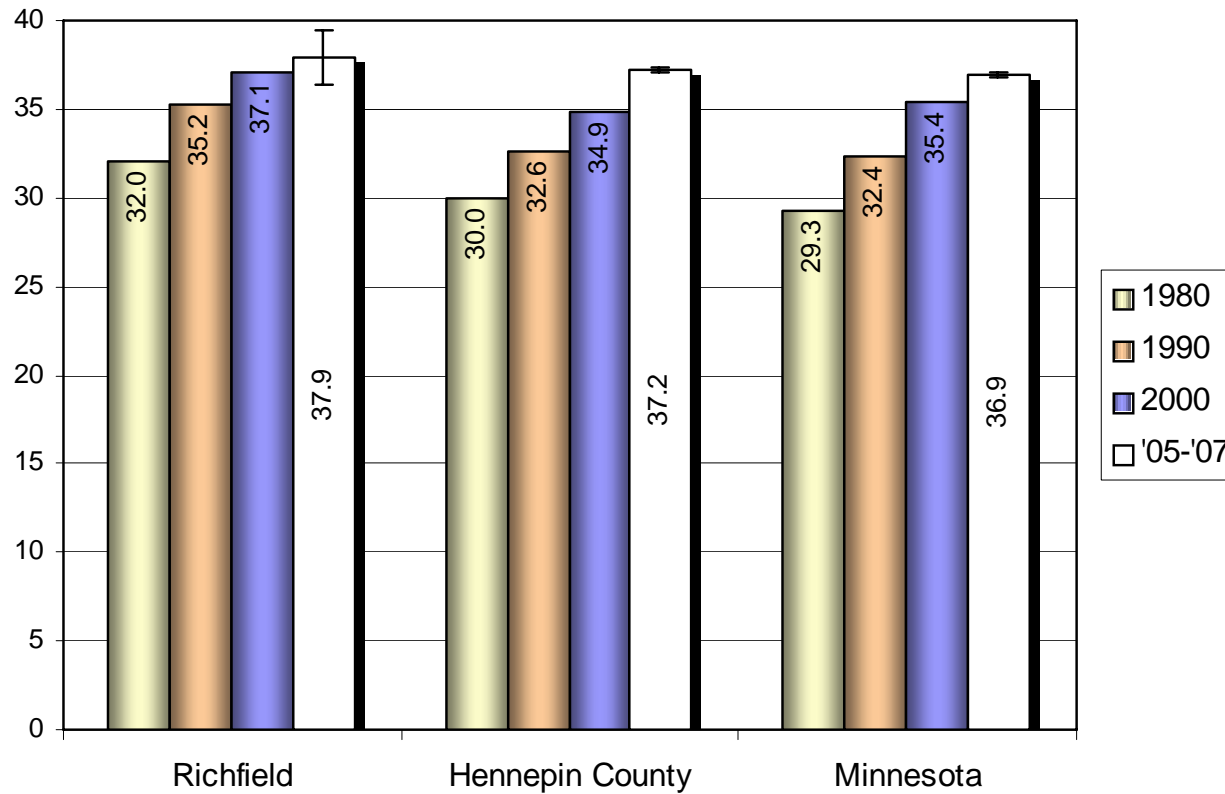
# People of color as a percentage of the population by race/ethnicity



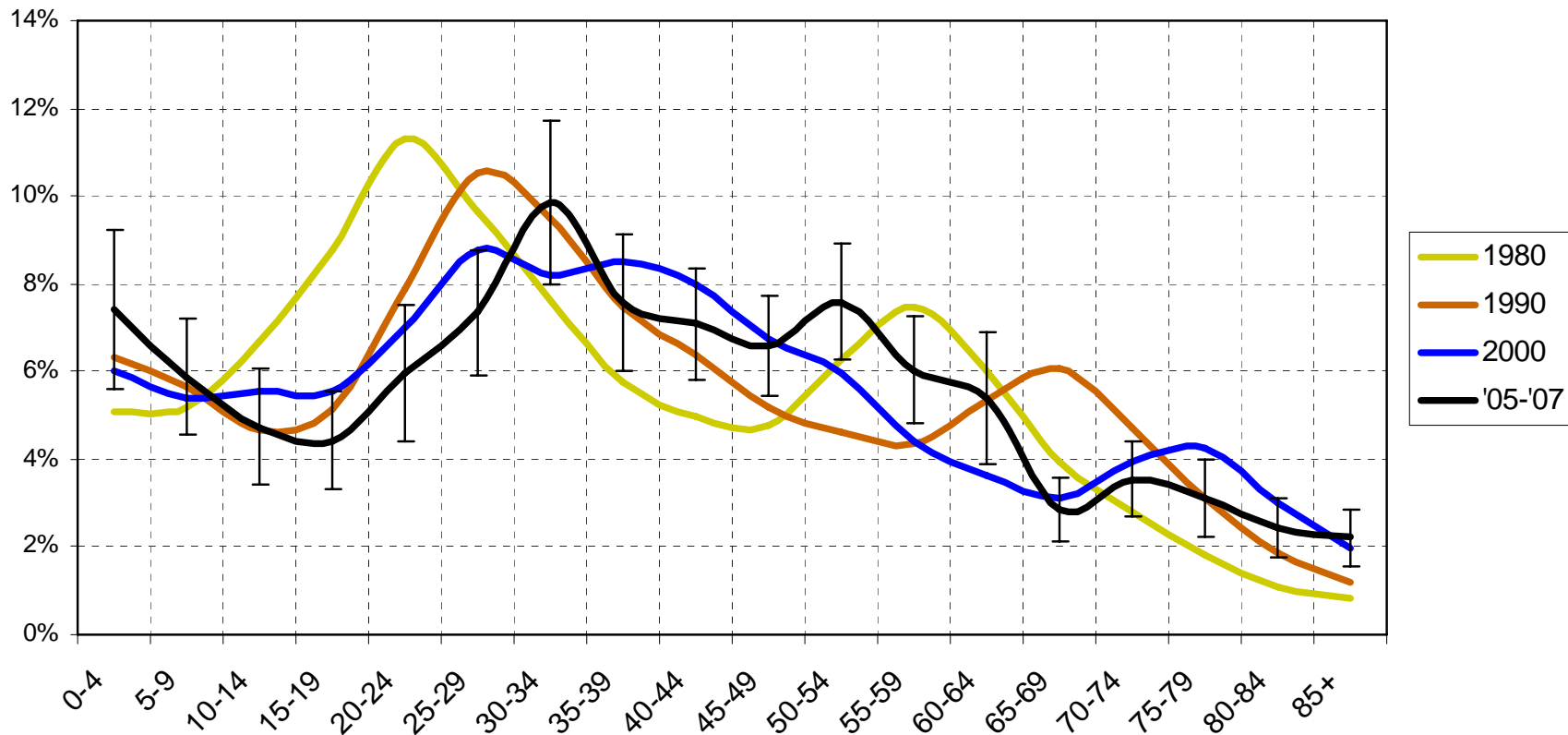
# Foreign-born population



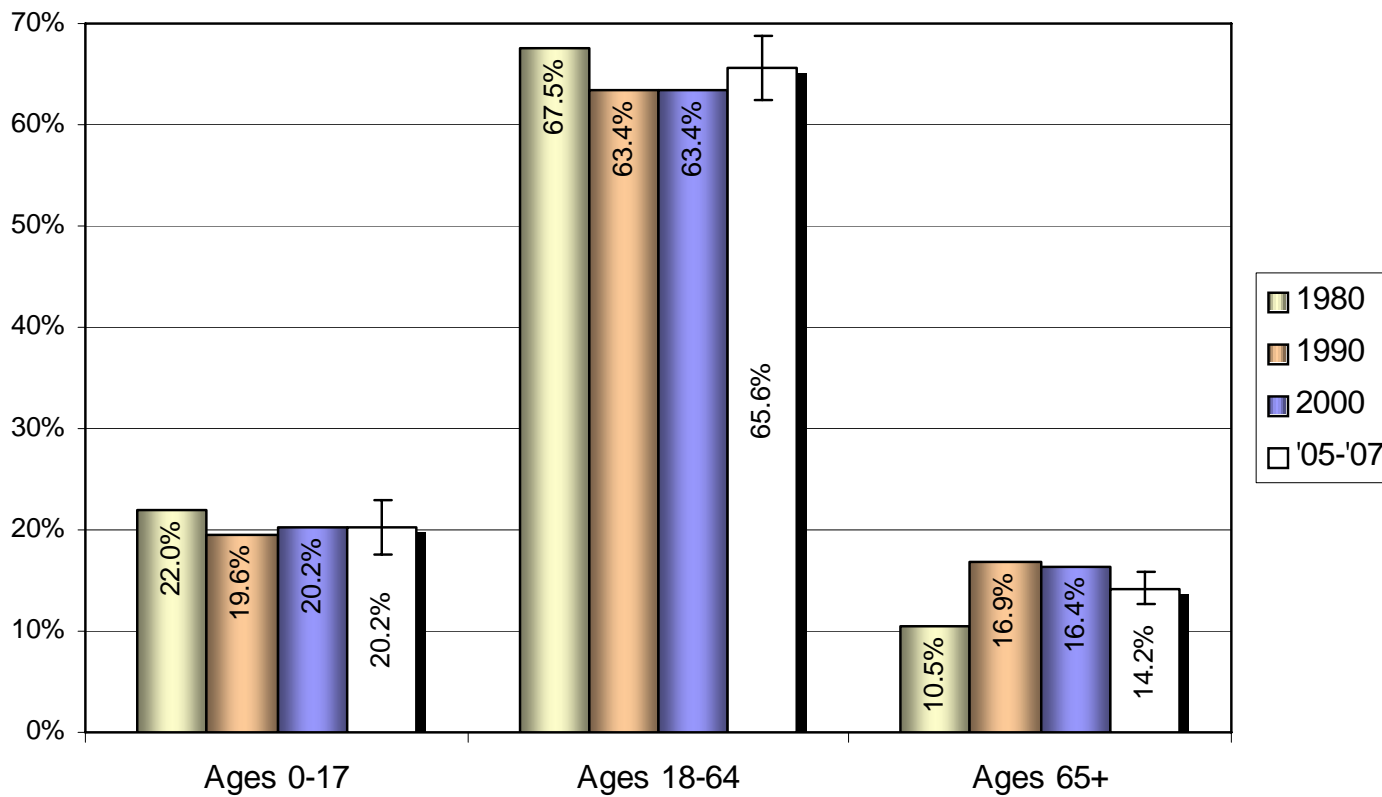
# Median Age



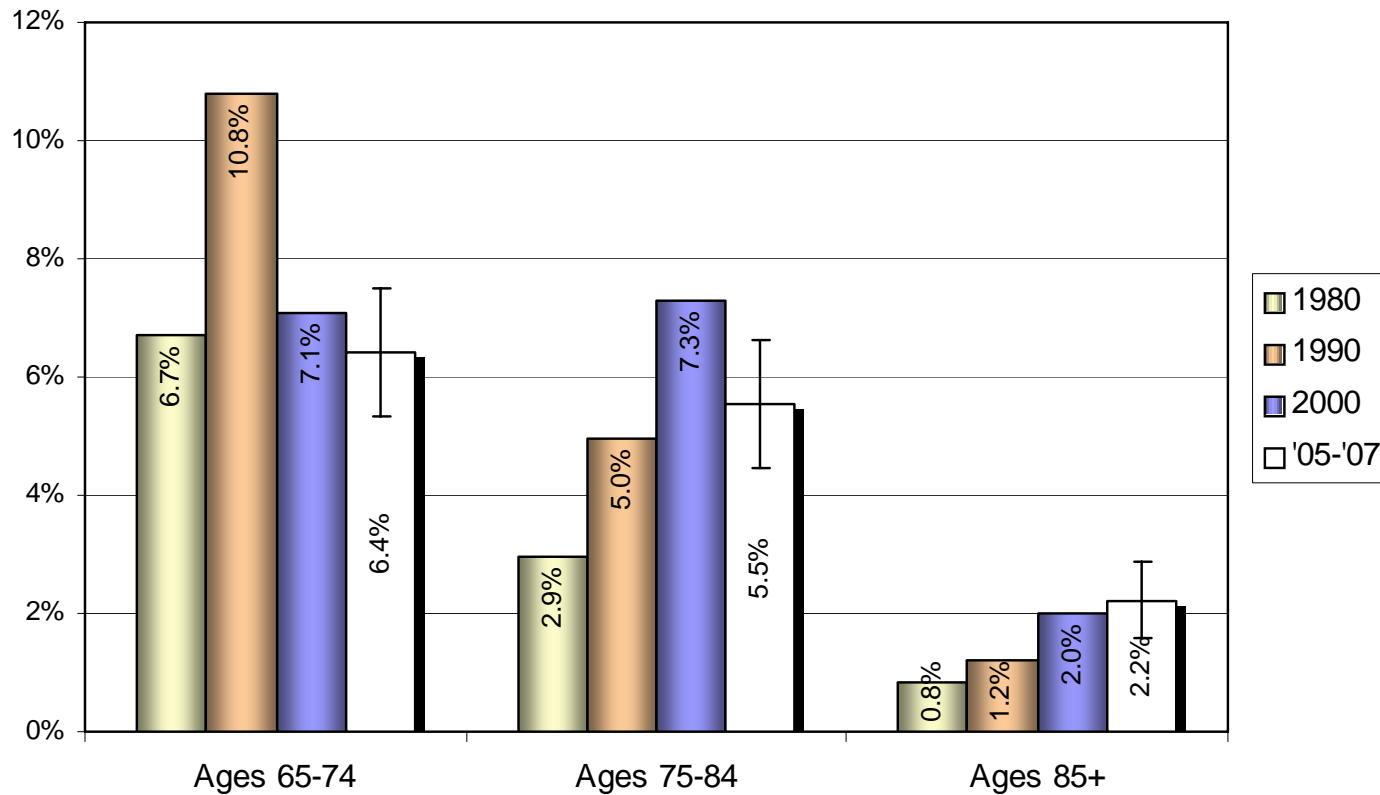
# Distribution of population by age



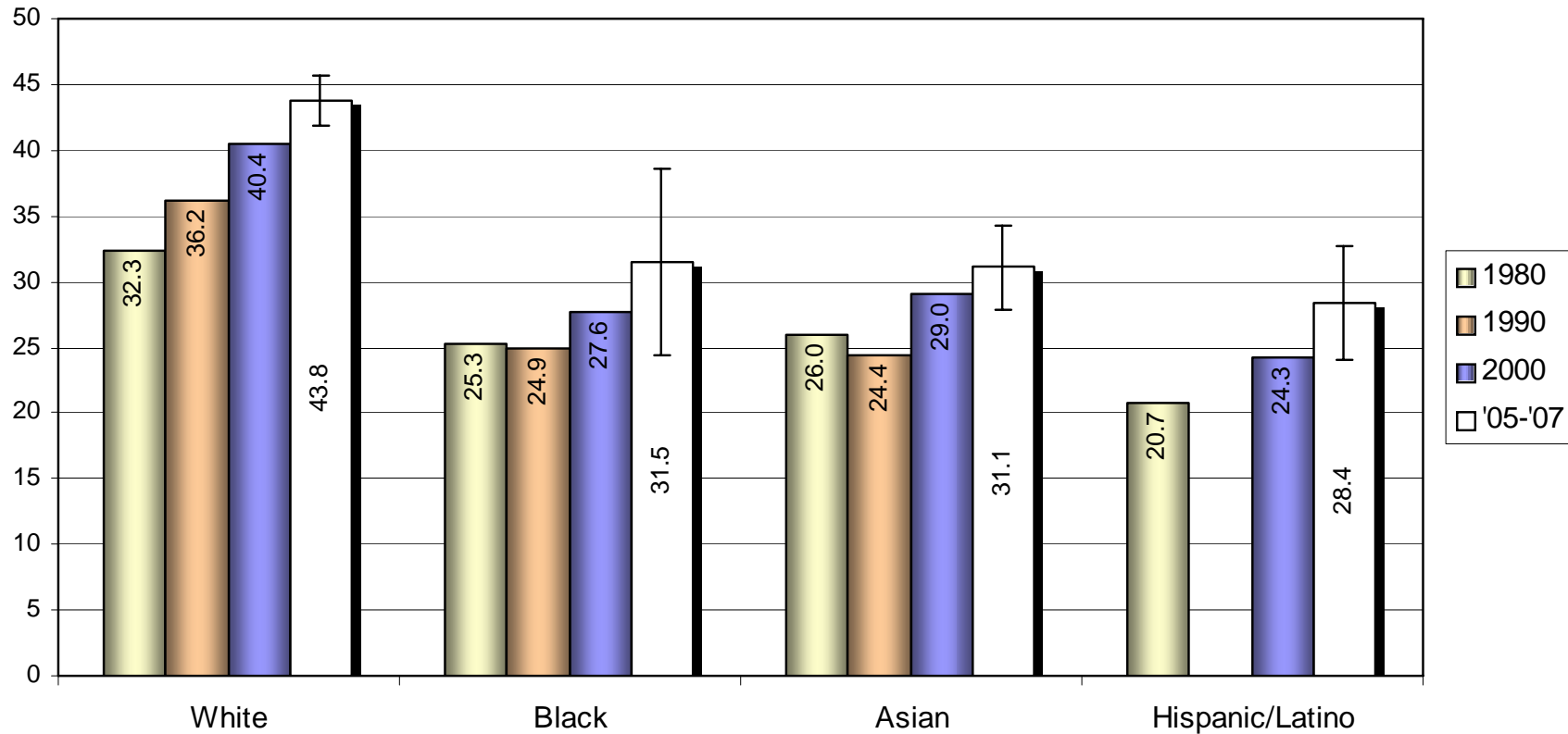
# Age composition



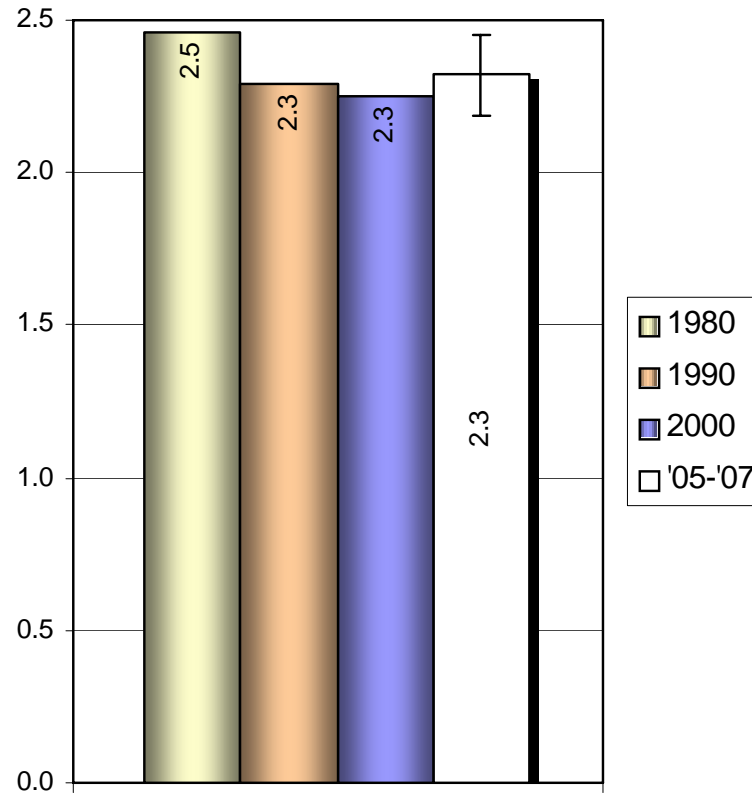
# The changing senior population



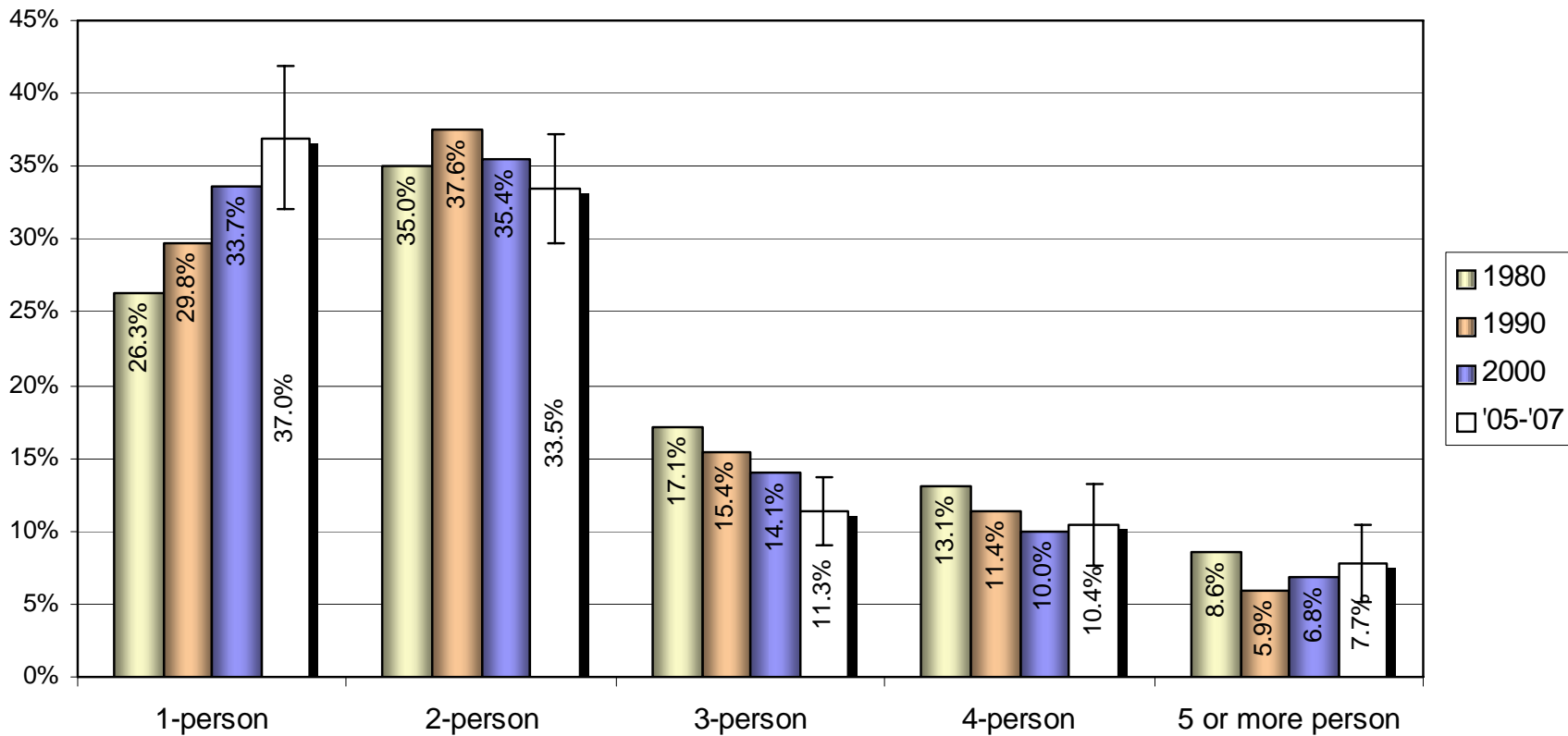
# Median age by race/ethnicity



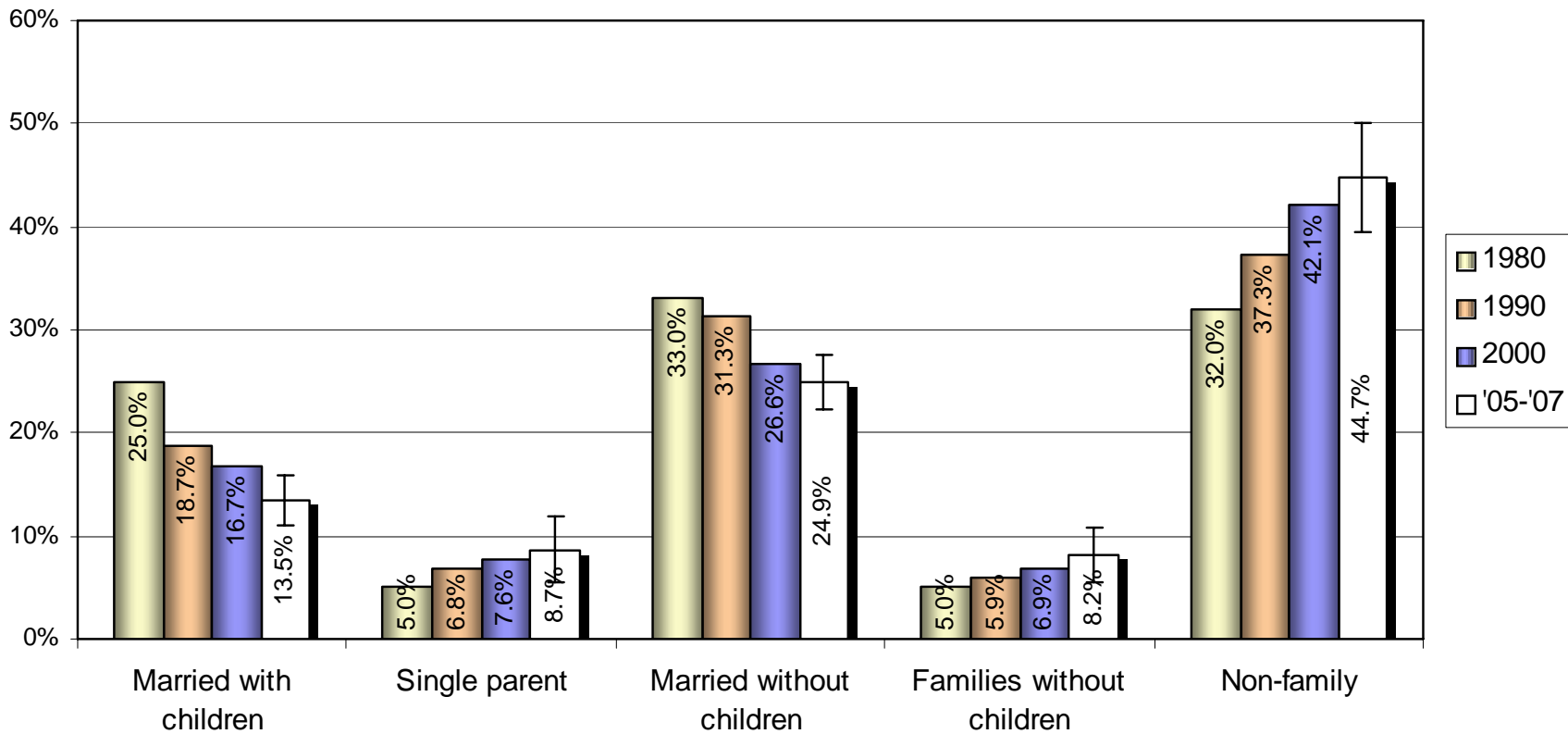
# Average household size



# Household size

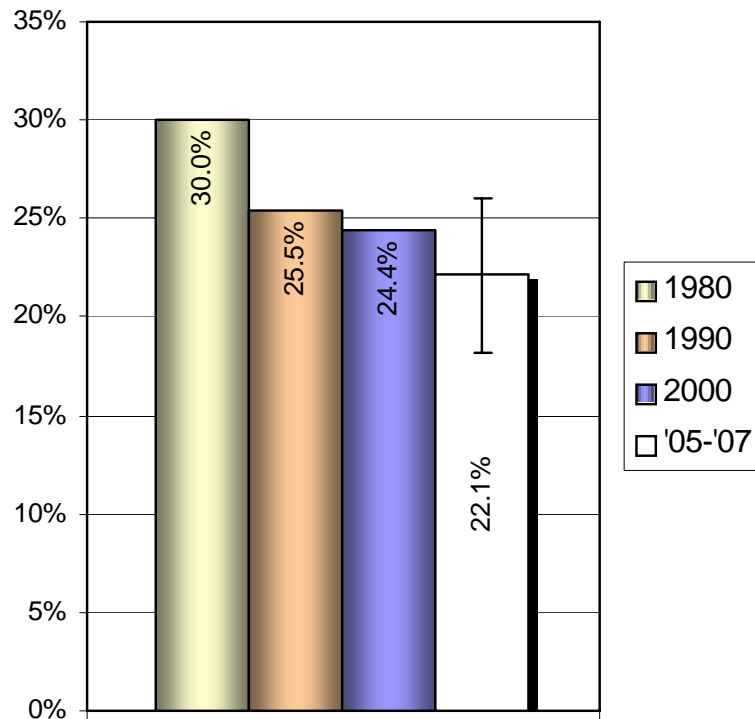


# Household types

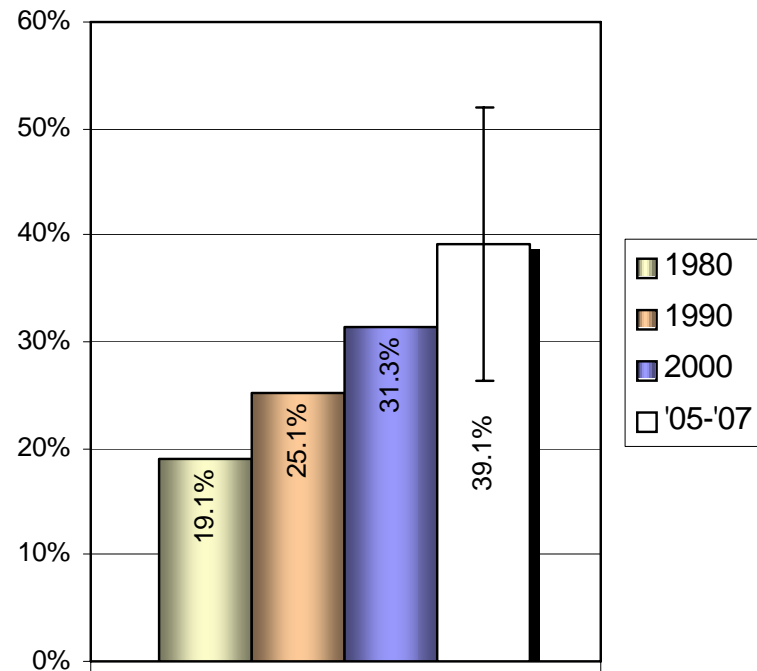


# Household types (cont.)

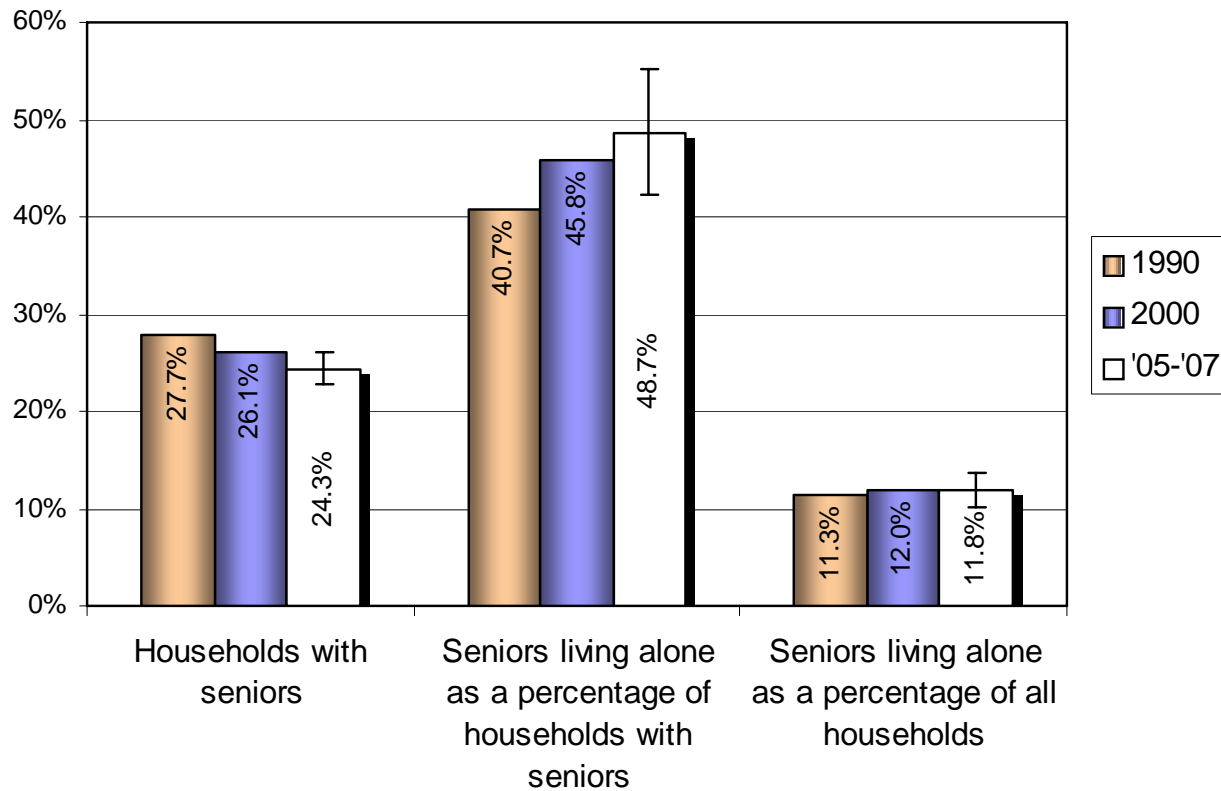
### Households with own children



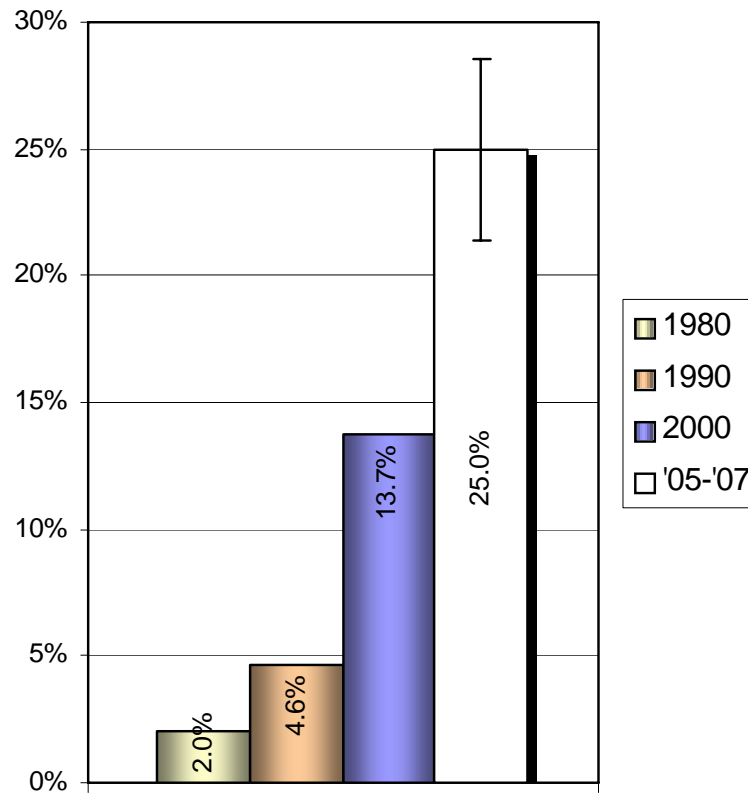
### Single parents as a percentage of families with children



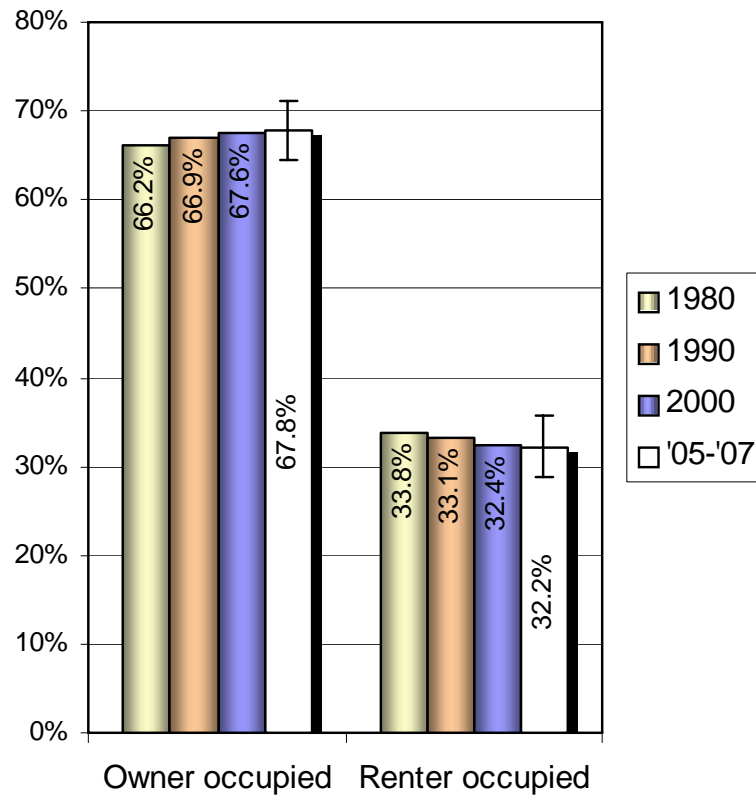
# Households with seniors



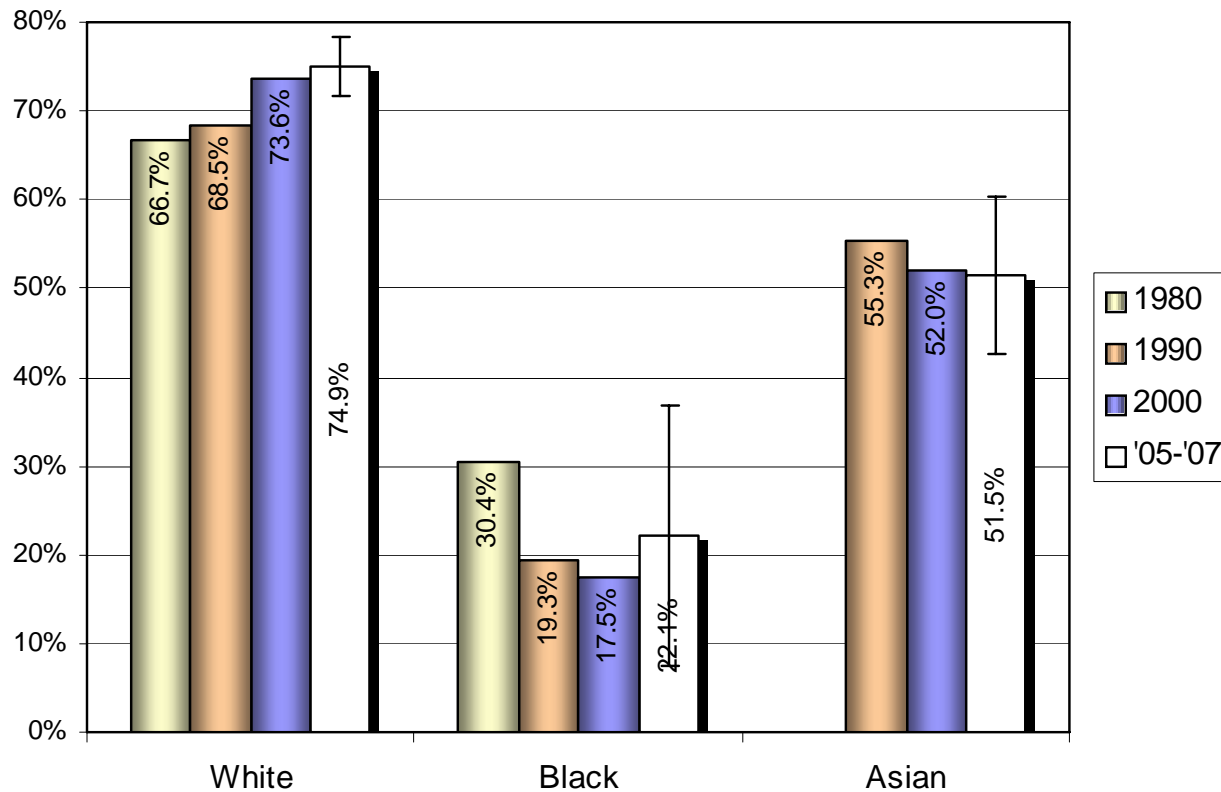
# Householders of color



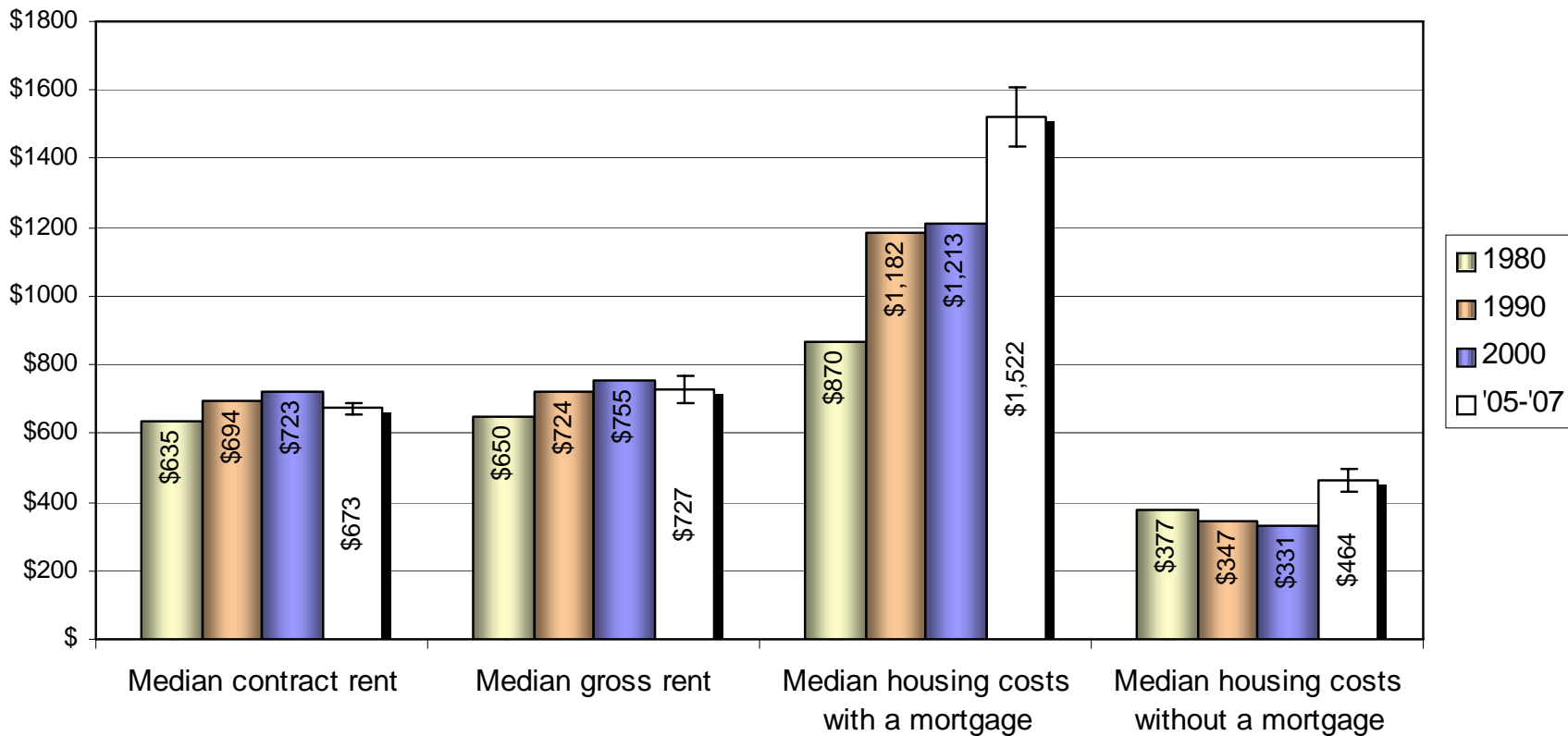
# Occupancy in housing units



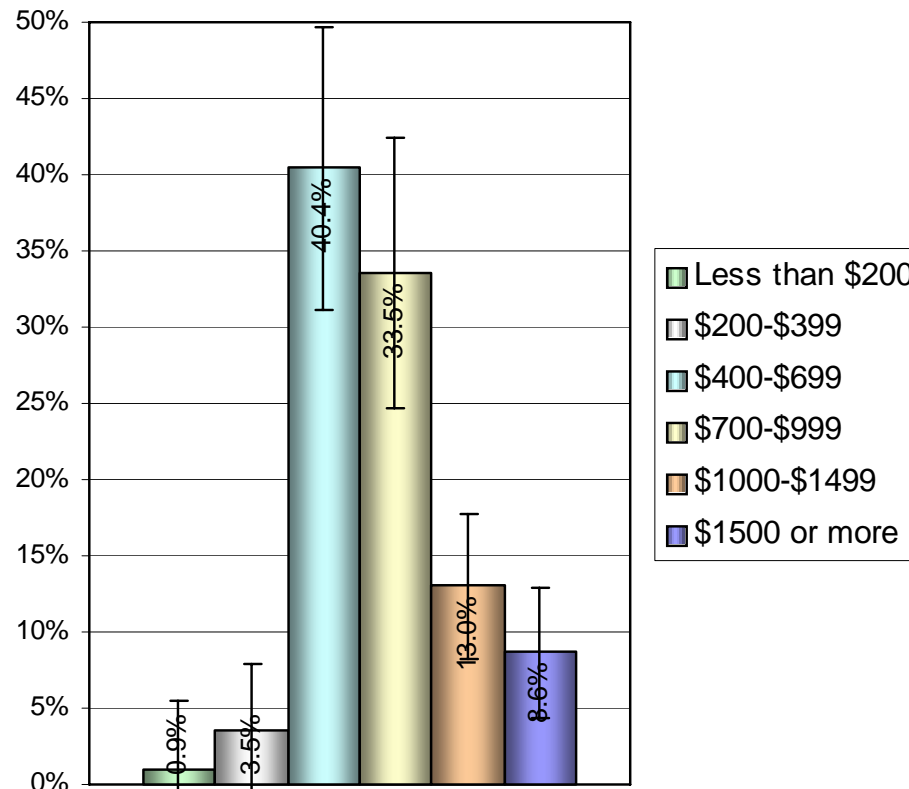
# Owner occupancy rates by race of householder



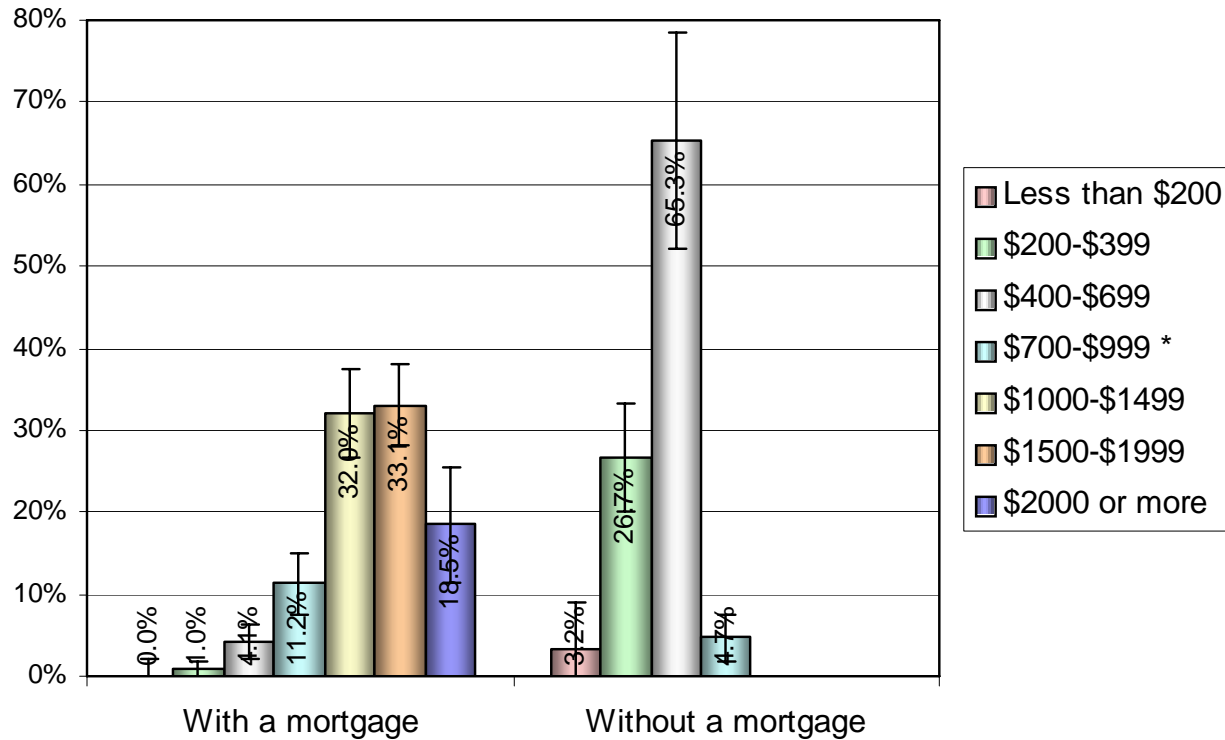
# Median housing costs (in 2007 dollars)



# Gross rent in 2005-2007 (in 2007 dollars)

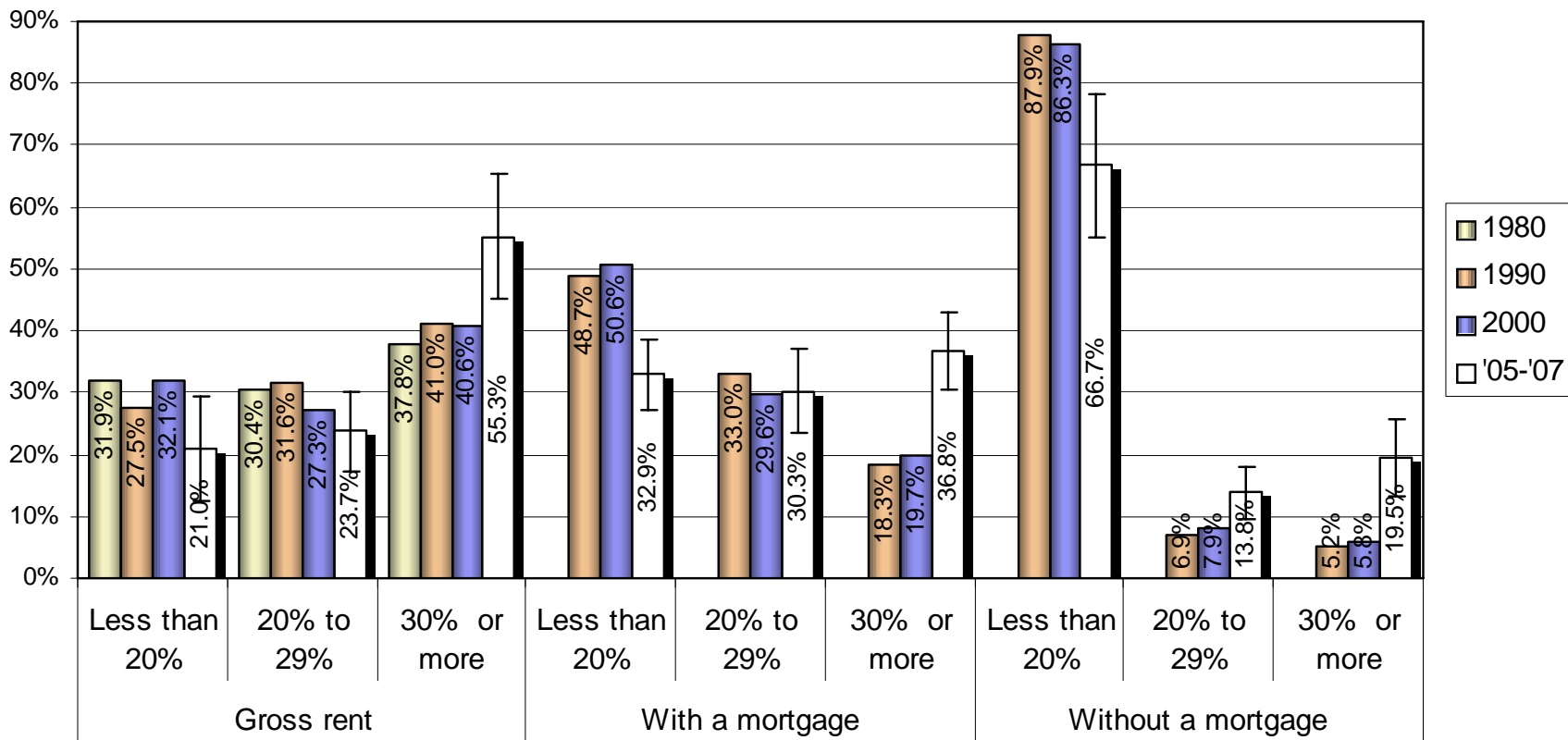


# Homeowners' costs in 2005-2007 (in 2007 dollars)

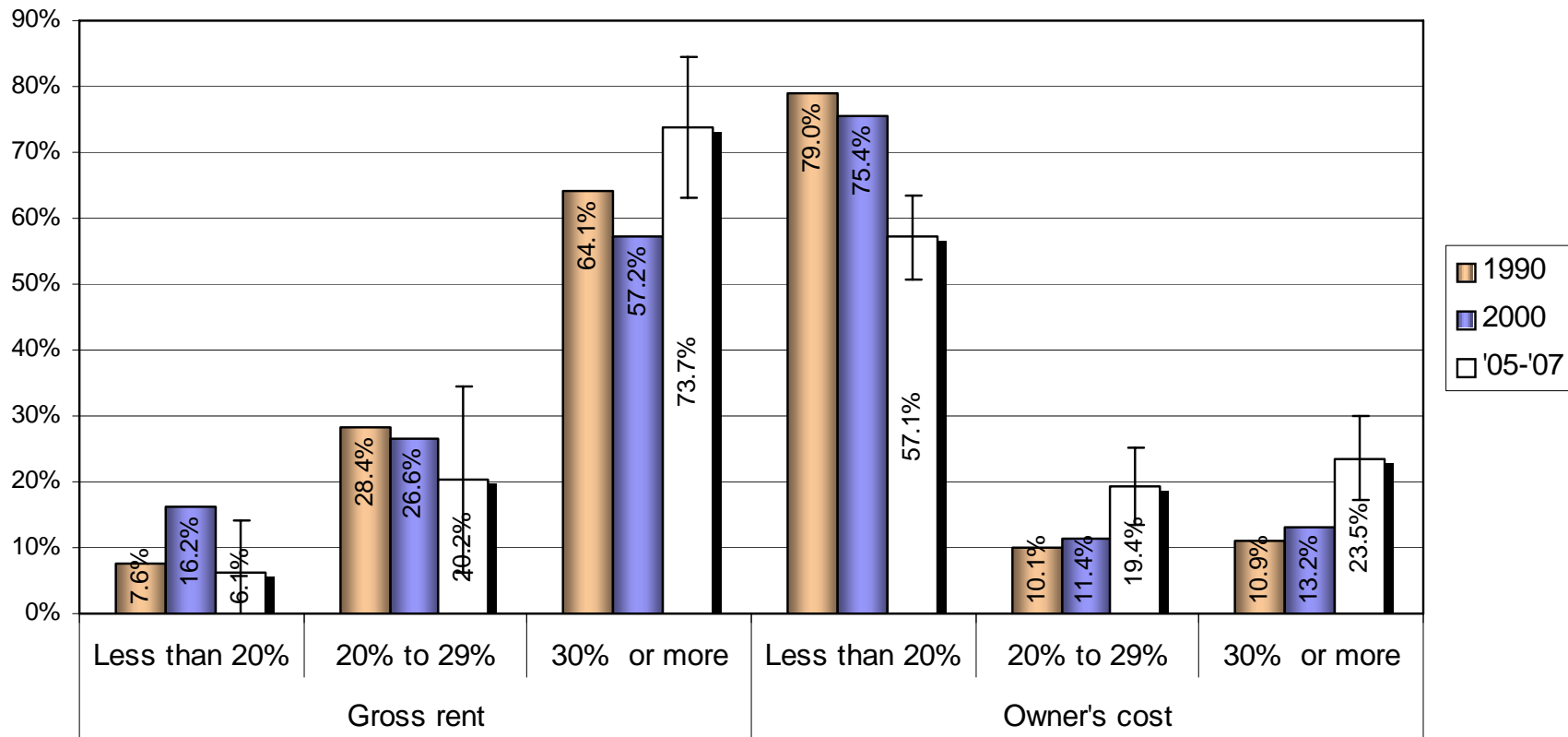


\* \$700 or more for "Without a mortgage"

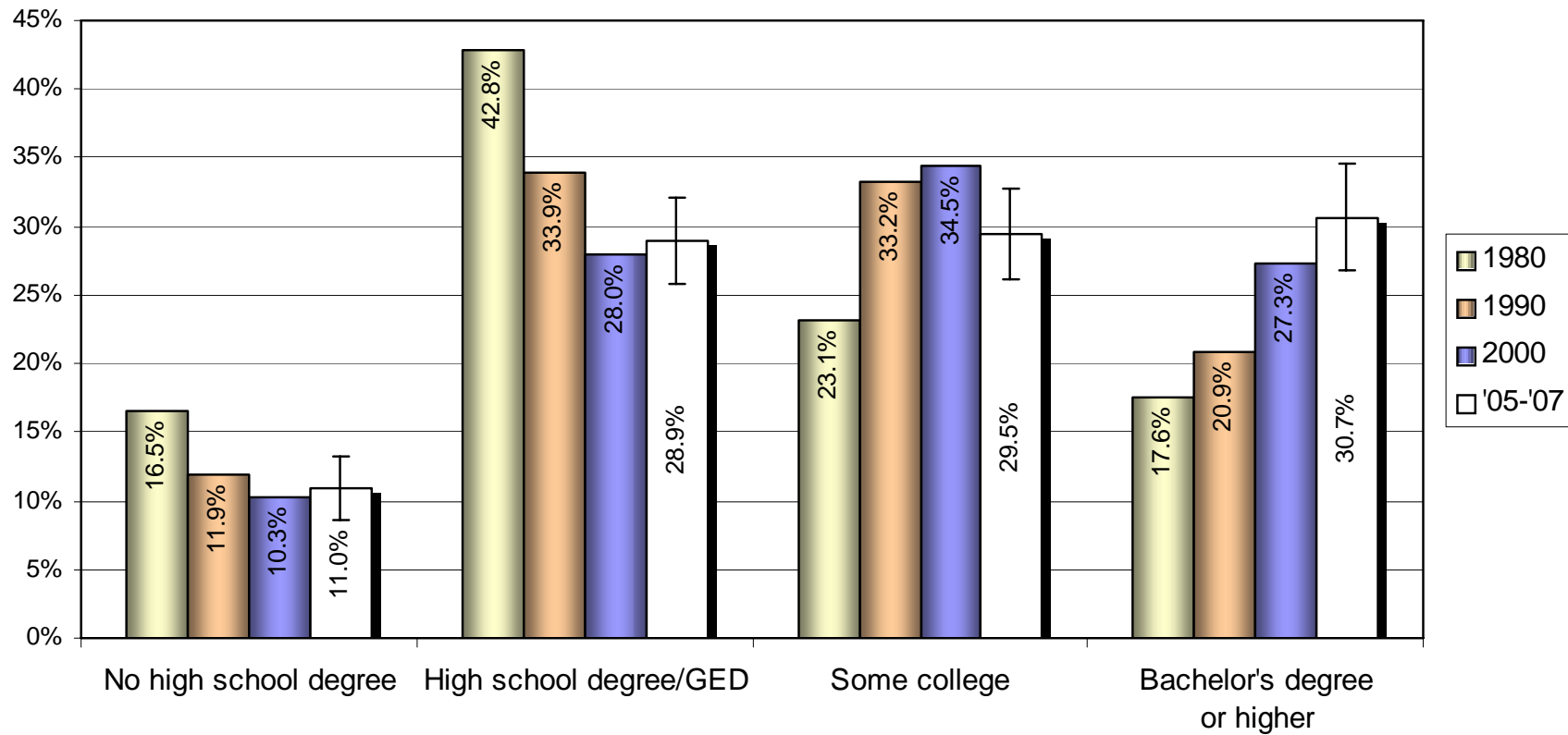
# Housing costs as percentage of household income



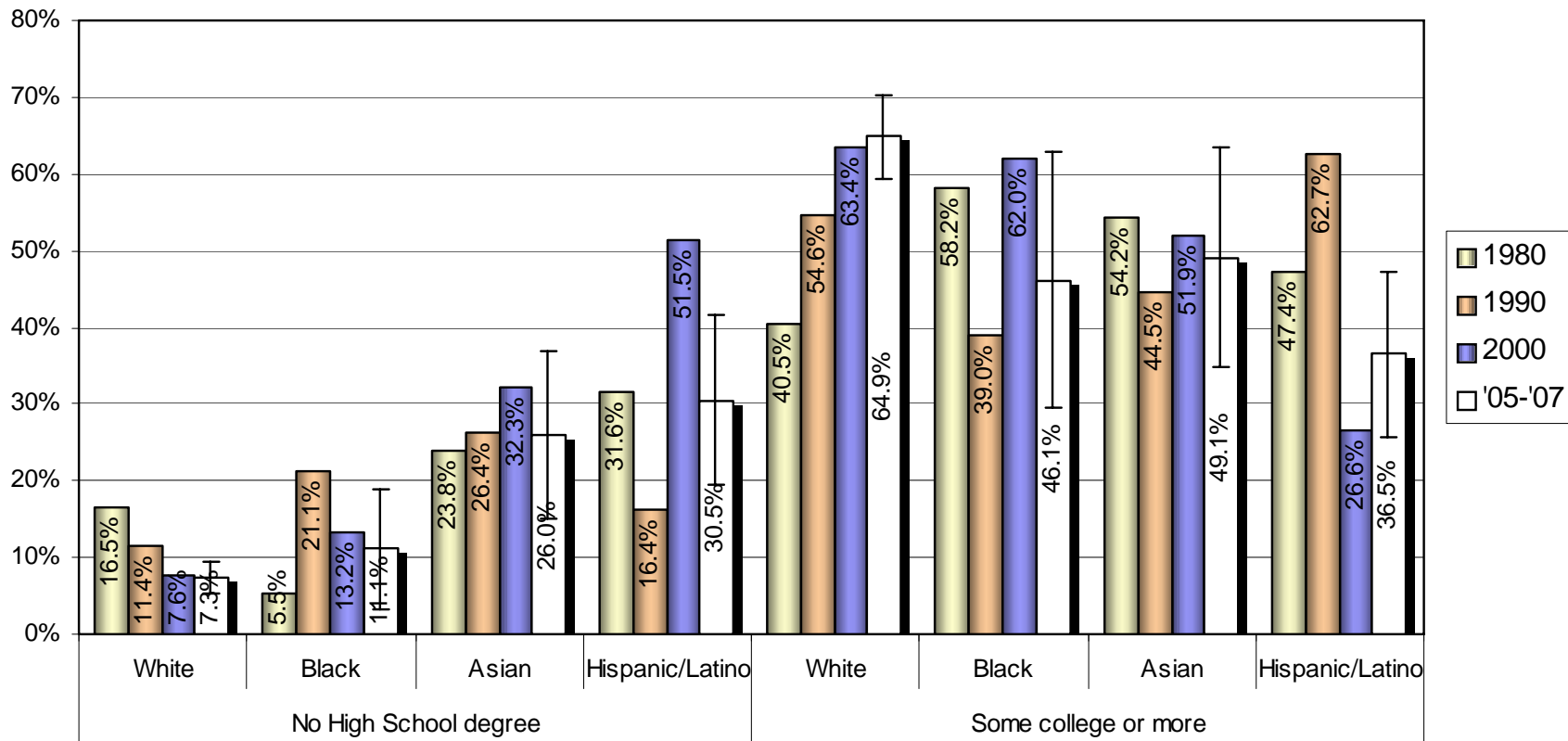
# Housing costs as percentage of household income for Seniors



# Educational attainment

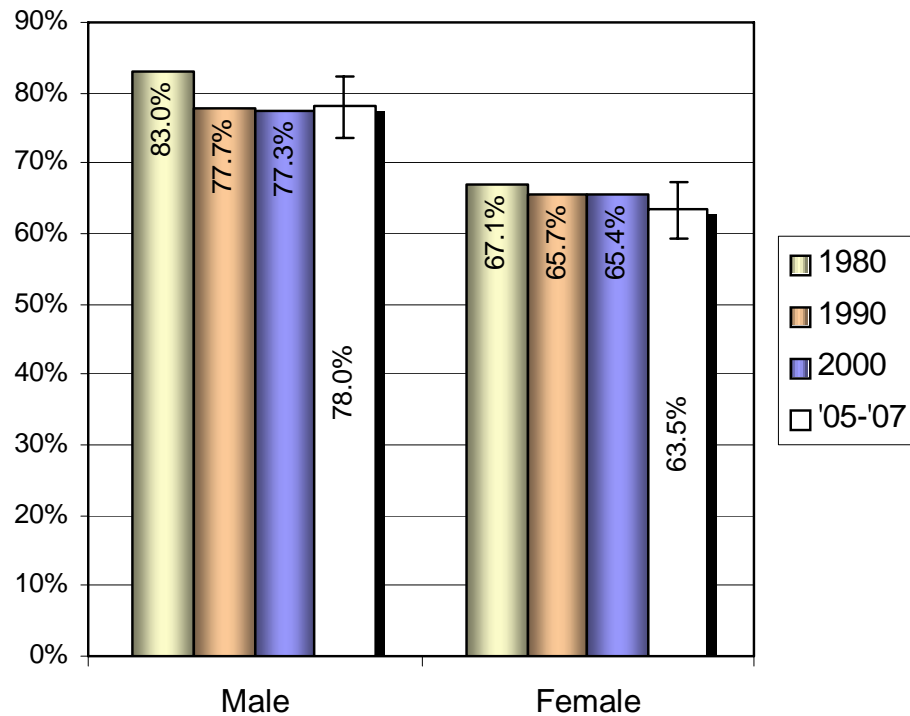


# Educational attainment by Race/Ethnicity

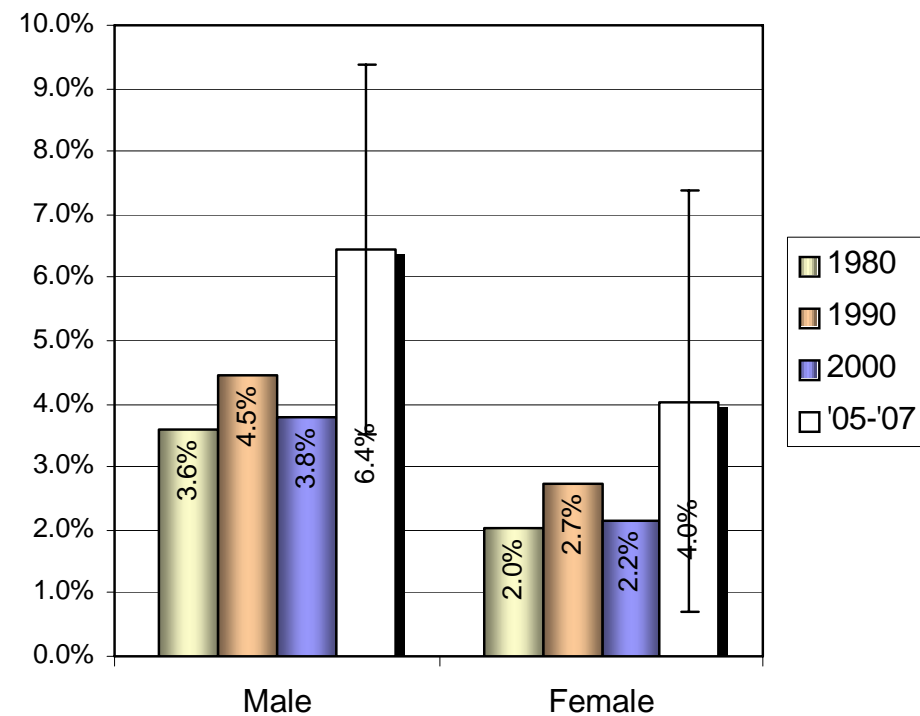


# Labor force participation and unemployment by gender

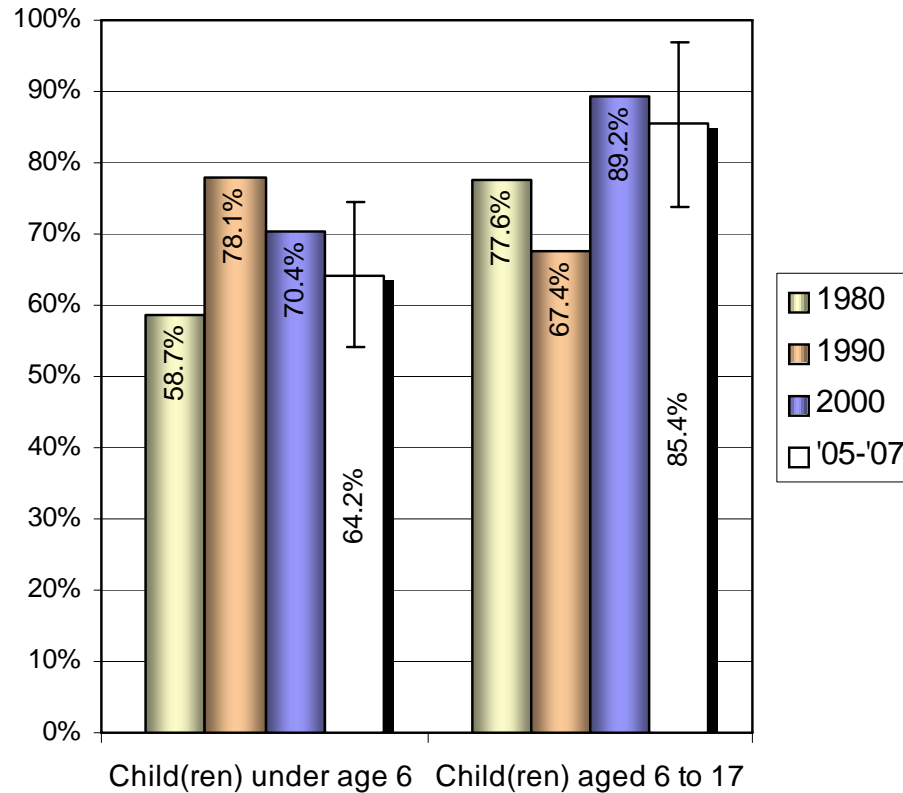
## Labor force participation



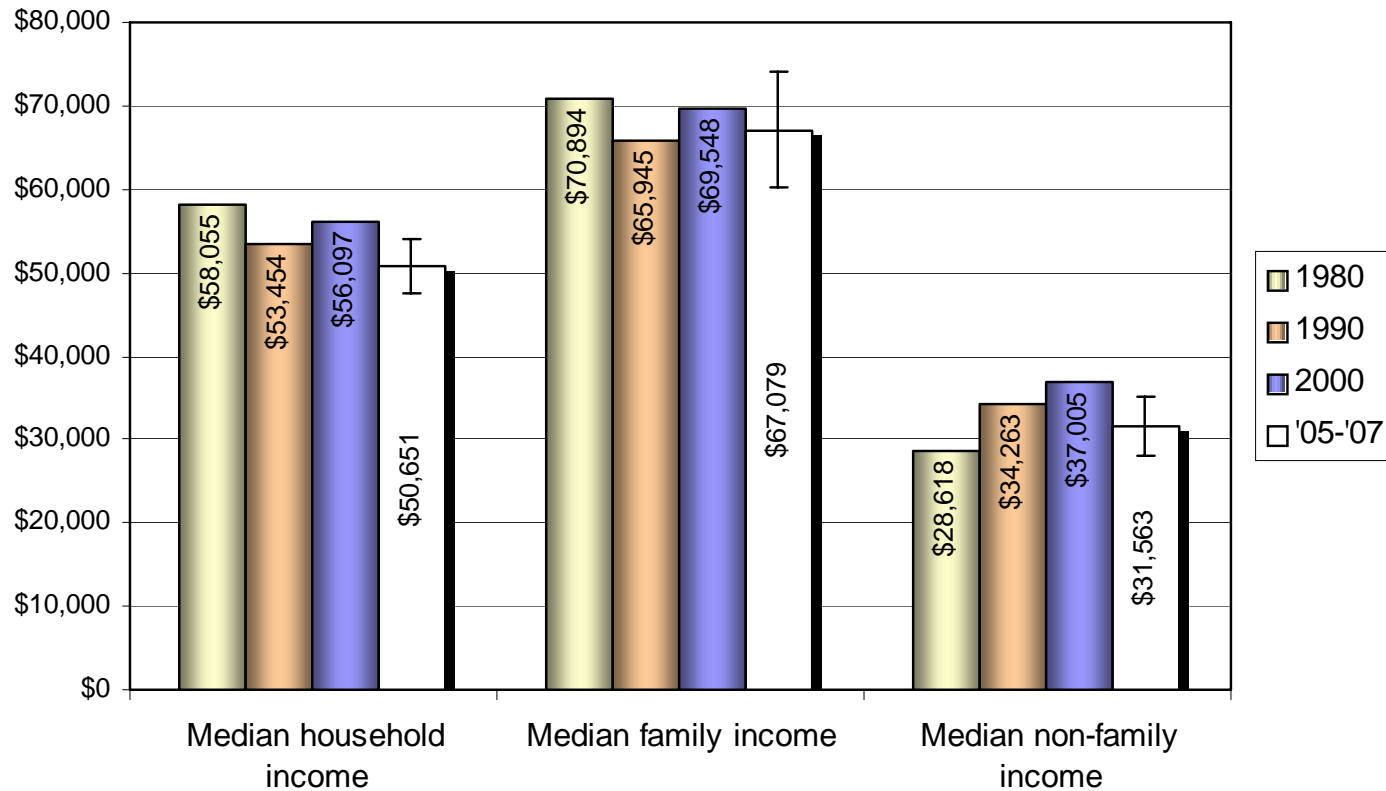
## Unemployment



# Labor force participation of women with children

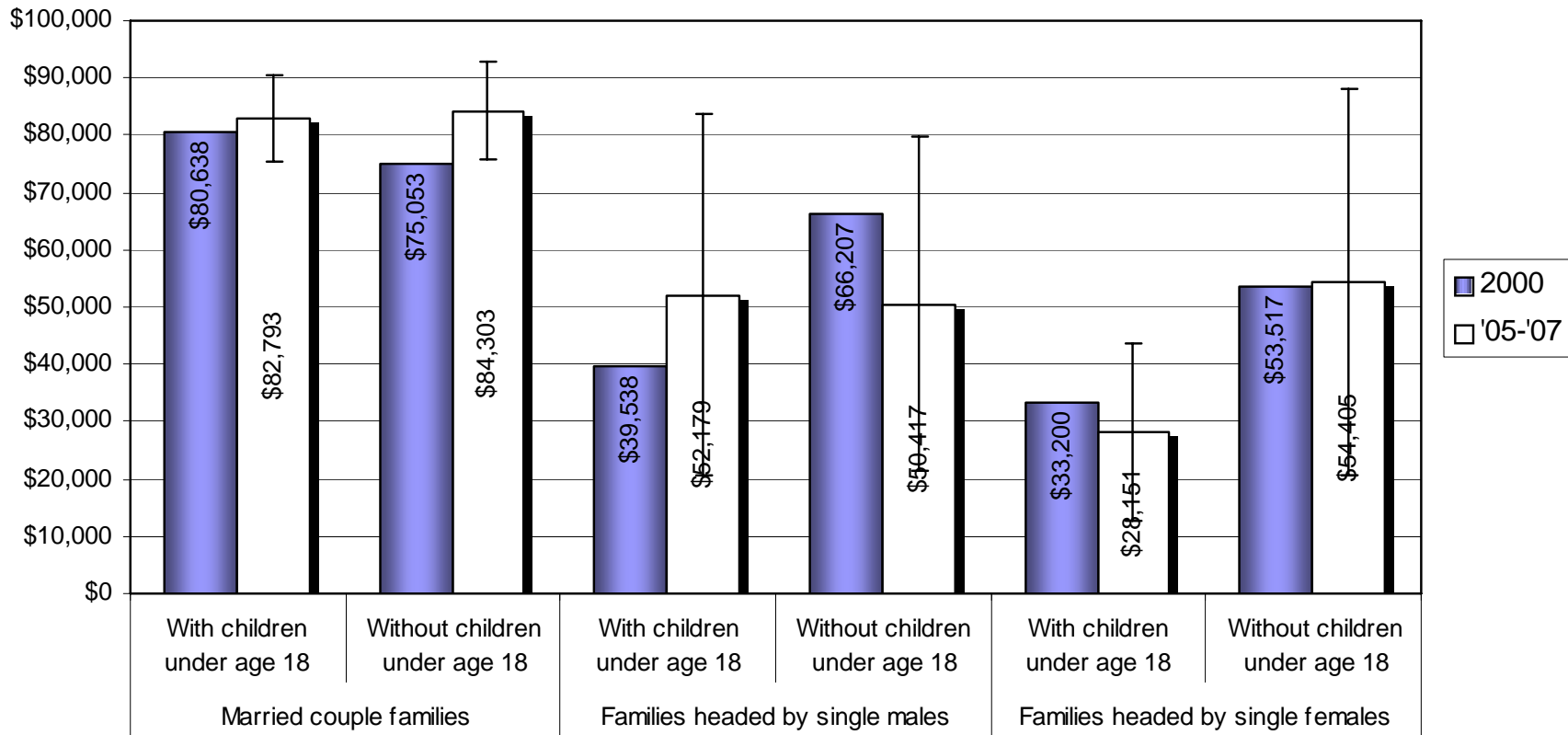


# Median household, family, and non-family income (in 2007 dollars)

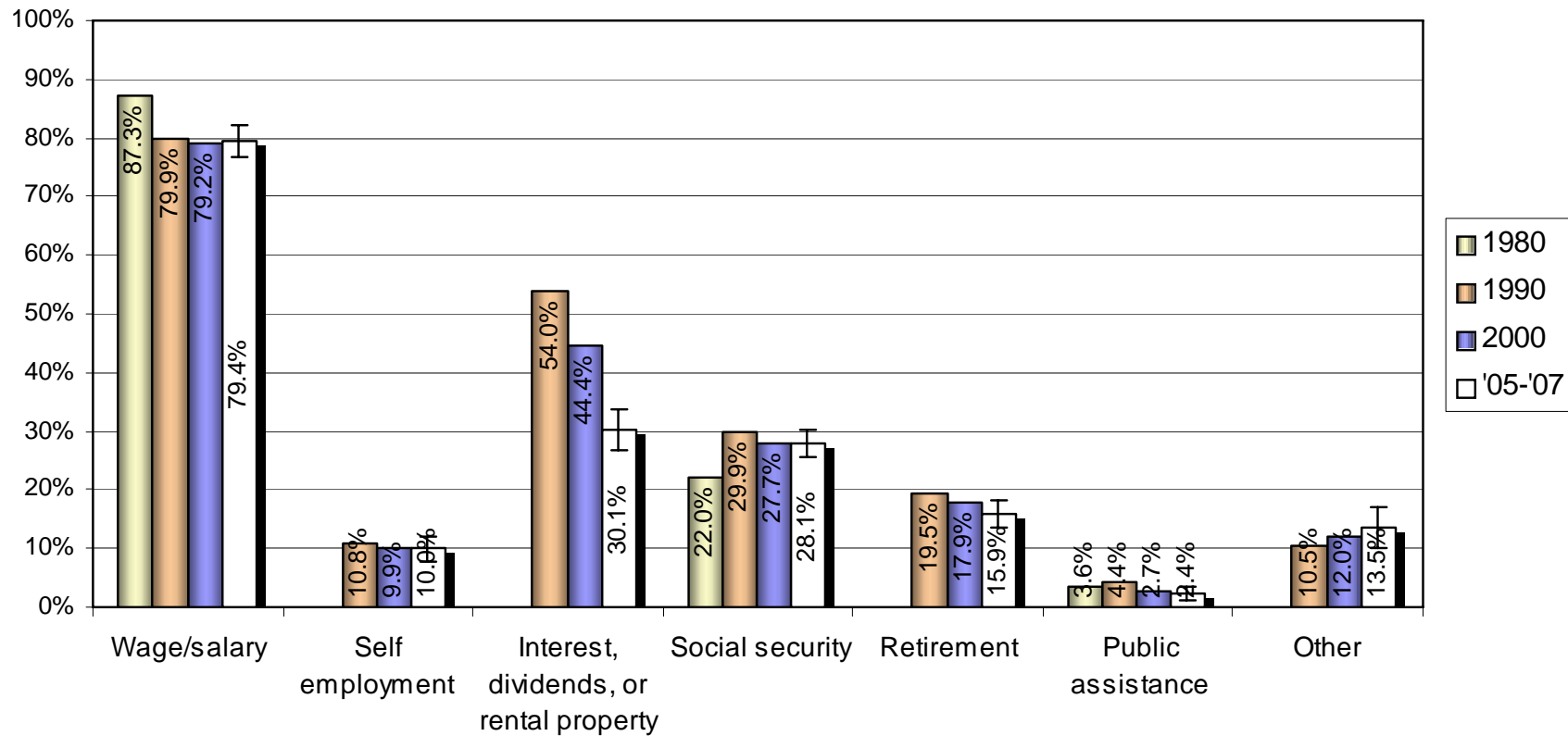


# Median family income by family type

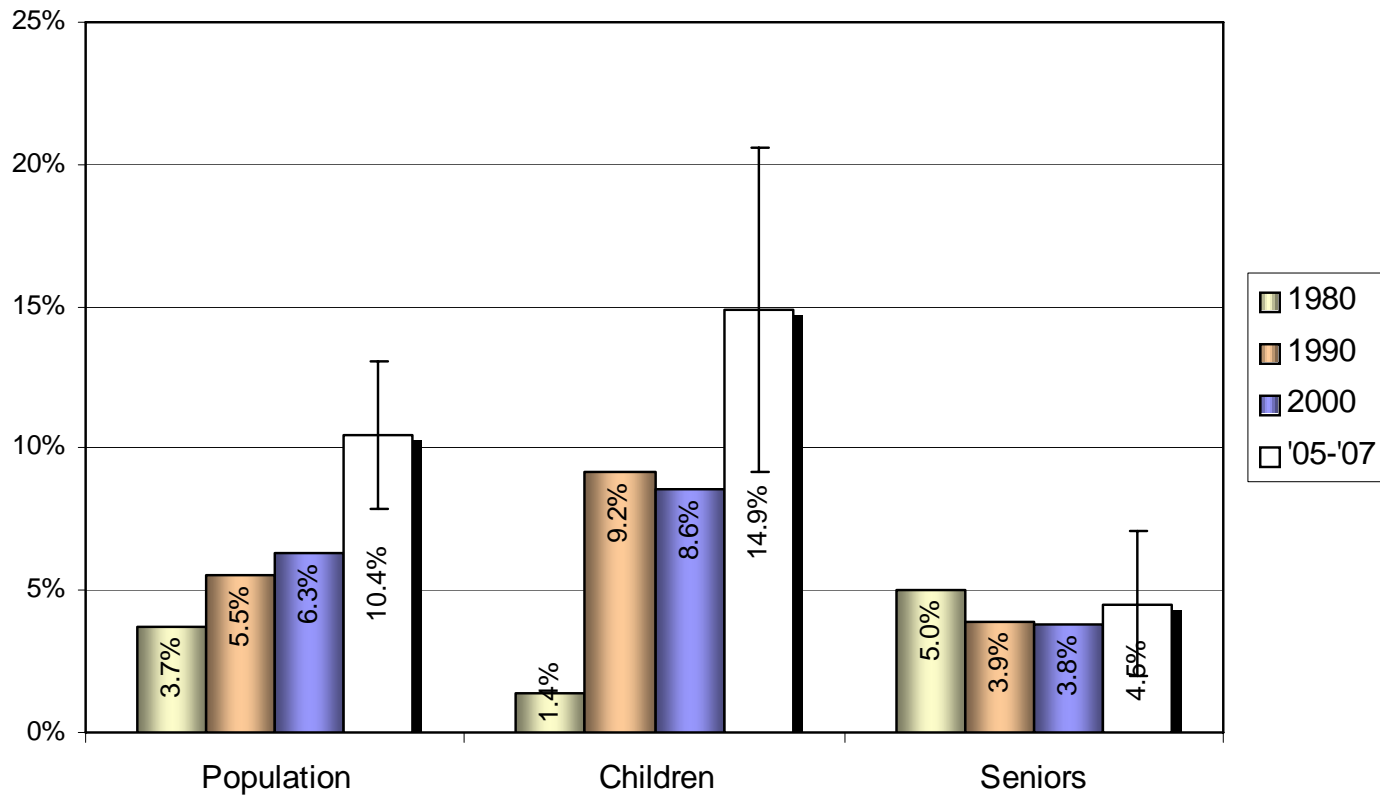
(in 2007 dollars)



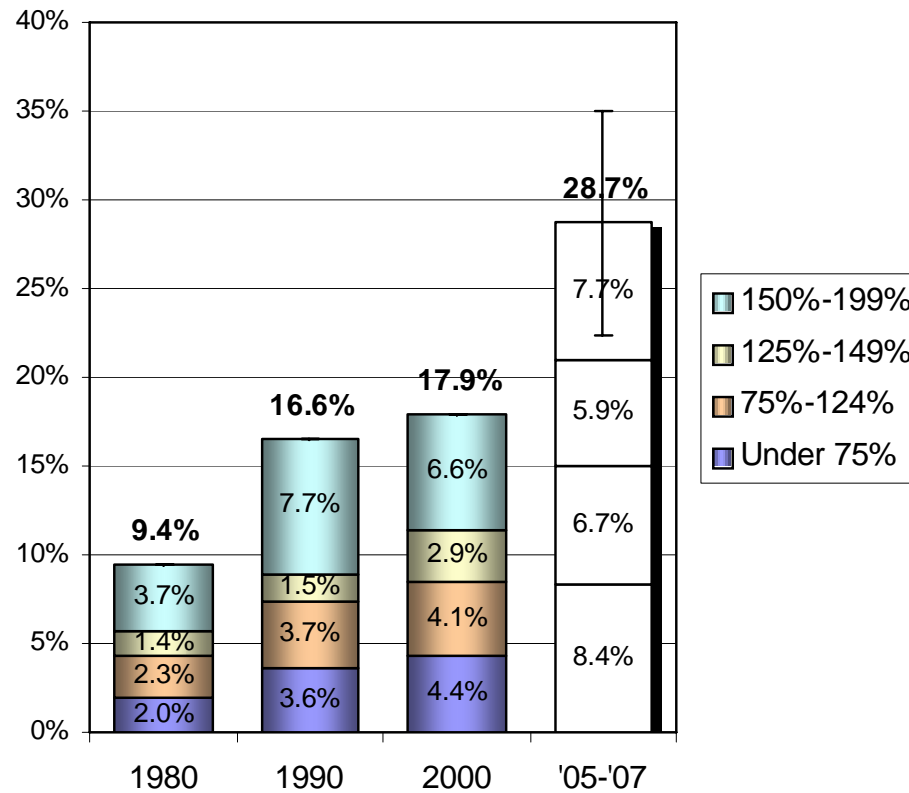
# Sources of household income



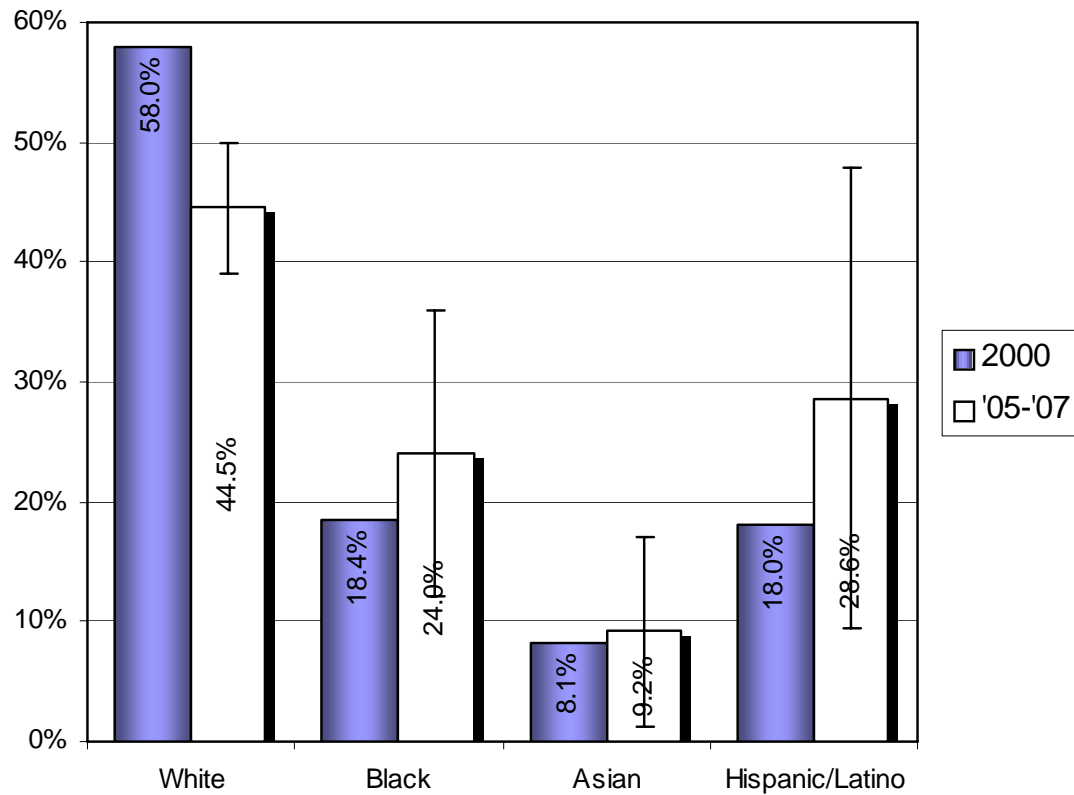
# Population, children, and seniors in poverty



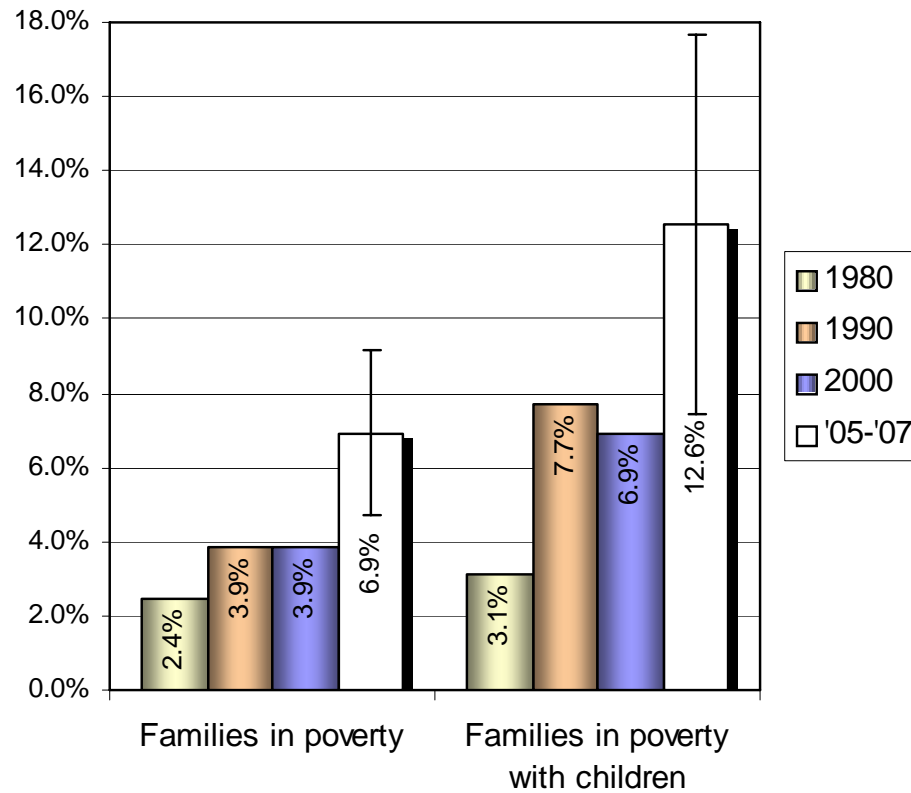
# Population below 200% of poverty



# Race/Ethnicity of population in poverty



# Families in poverty





# Things to “take away”

---

1. Although the total population\* and number of households and families are decreasing, Richfield is becoming more diverse – substantial increases in the population of color and the foreign-born population. (\* total population in 2005-2007 is statistically equal to total population in 2000)
2. The median age steadily increased from 1980 to 2000 but unsure of trend into 2005-2007 – fairly stable portion of children and a decreasing portion of seniors since 1990. White population significantly older than any population of color.
3. 1- and 2-person households now comprise about 70% of households – significant decrease in married couples with children and increases in non-family households and single parent families.
4. Households with seniors are becoming a smaller portion of all households but they are increasingly living alone.



## Things to “take away” (cont.)

---

5. Owner occupancy rates are slowly but steadily rising; however, there is a significant difference in portions and trends of rates by racial group – may be affected by substantially increasing housing costs with a mortgage.
6. Increasing portions of all householders (both renters and owners) are “cost burdened” – especially seniors who rent.
7. Although a generally decreasing portion of the overall population has not attained at least a high school degree, there are significant differences by race/ethnicity.
8. Labor force participation rates decreased slightly from 1980 to 2000 for both males and females while rates generally increased for women with children.



## Things to “take away” (cont.)

---

9. Median household income has generally decreased while median family income has been fairly stable; median non-family income increased from 1980 to 2000 but decreased in 2005-2007.
10. The portions of the total population and children living in poverty have generally steadily increased over the past 27 years while the portion of seniors decreased from 1980 to 2000.
11. The population living below 200% of poverty has steadily increased over the past 27 years.
12. The portions of all families in poverty and families in poverty with children have generally steadily increased over the past 27 years.



# Contact information

---

**Daryl Coppoletti**

**Regional Planning Coordinator**

**Hennepin South Services Collaborative**

952-922-5999 ex. 12

[daryl.coppoletti@hsscmn.org](mailto:daryl.coppoletti@hsscmn.org)

[www.hsscmn.org](http://www.hsscmn.org)