



Low Income Residents in Bloomington, Eden Prairie, and Edina

Presented by the
Hennepin South Services Collaborative
April 9, 2011



Data Sources

- U.S. Census Bureau
 - 1980, 1990 & 2000 Decennial Census
 - 2007-2009 American Community Survey (ACS)
- Minnesota Department of Education
- Hennepin County Sheriff's Office

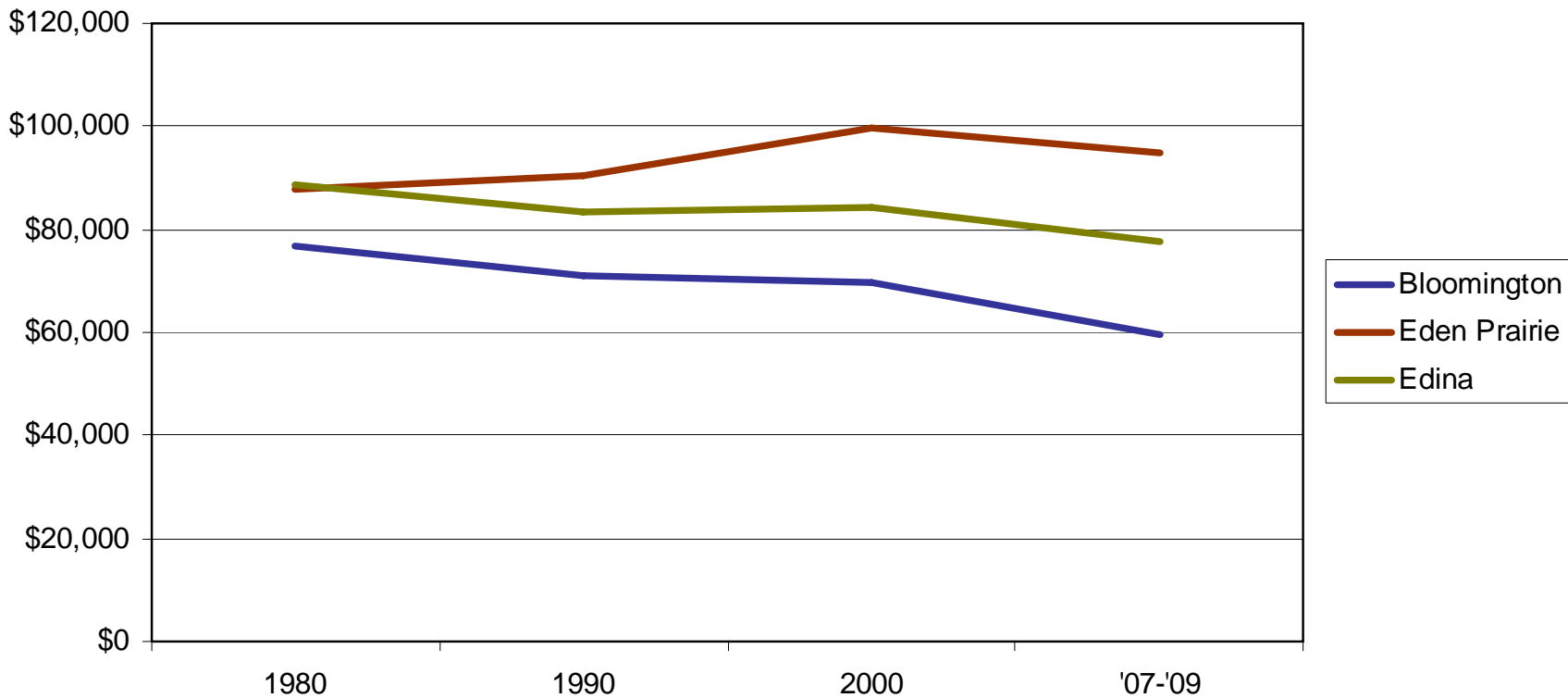


Median Household Income

- Median household income (in 2009 dollars) has decreased in Bloomington and Edina
- Median household income had steadily increased in Eden Prairie until 2007-2009 when it decreased

Median Household Income

(in 2009 dollars)

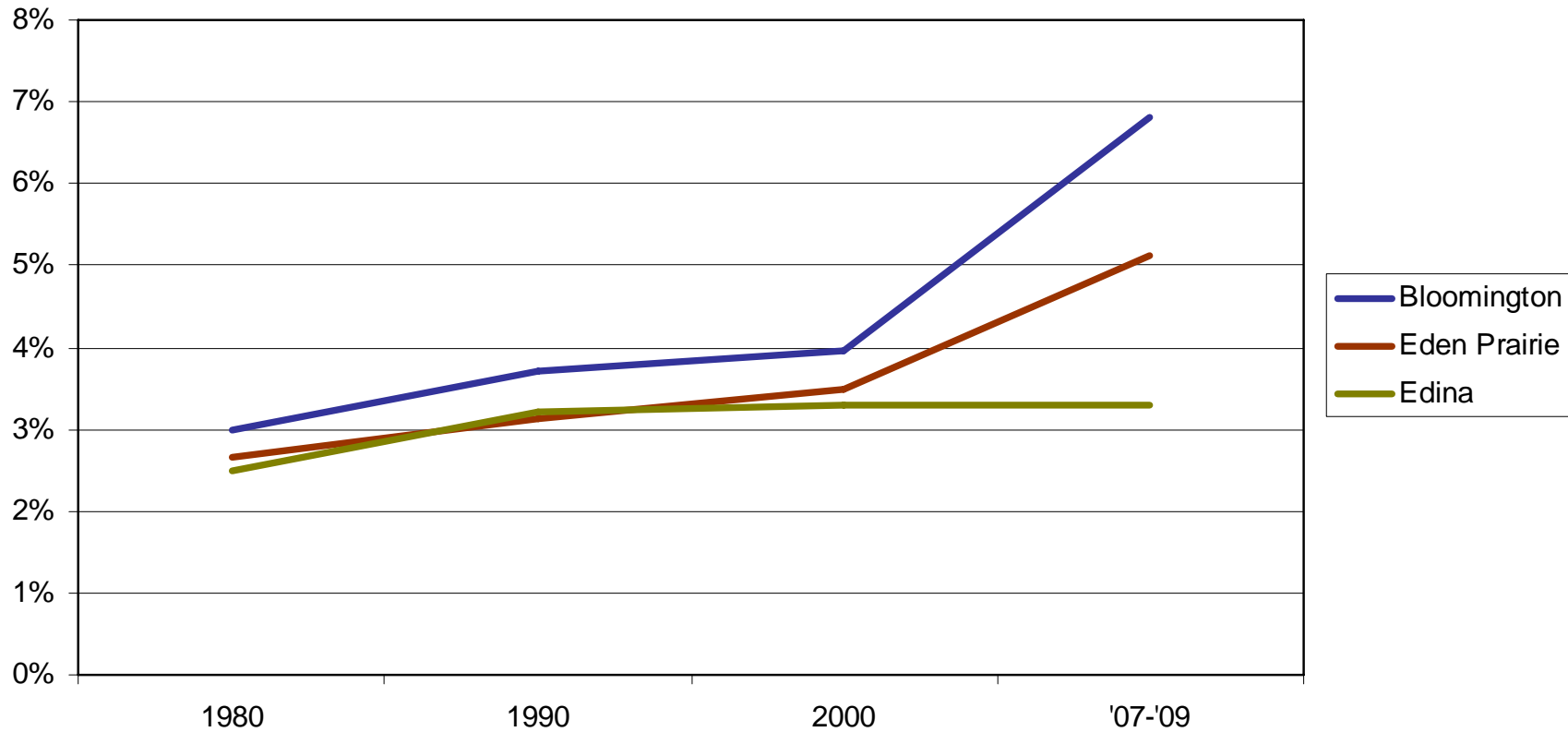




Population Living in Poverty

- The percentage of the population living in poverty has increased in all three cities

Population Living in Poverty

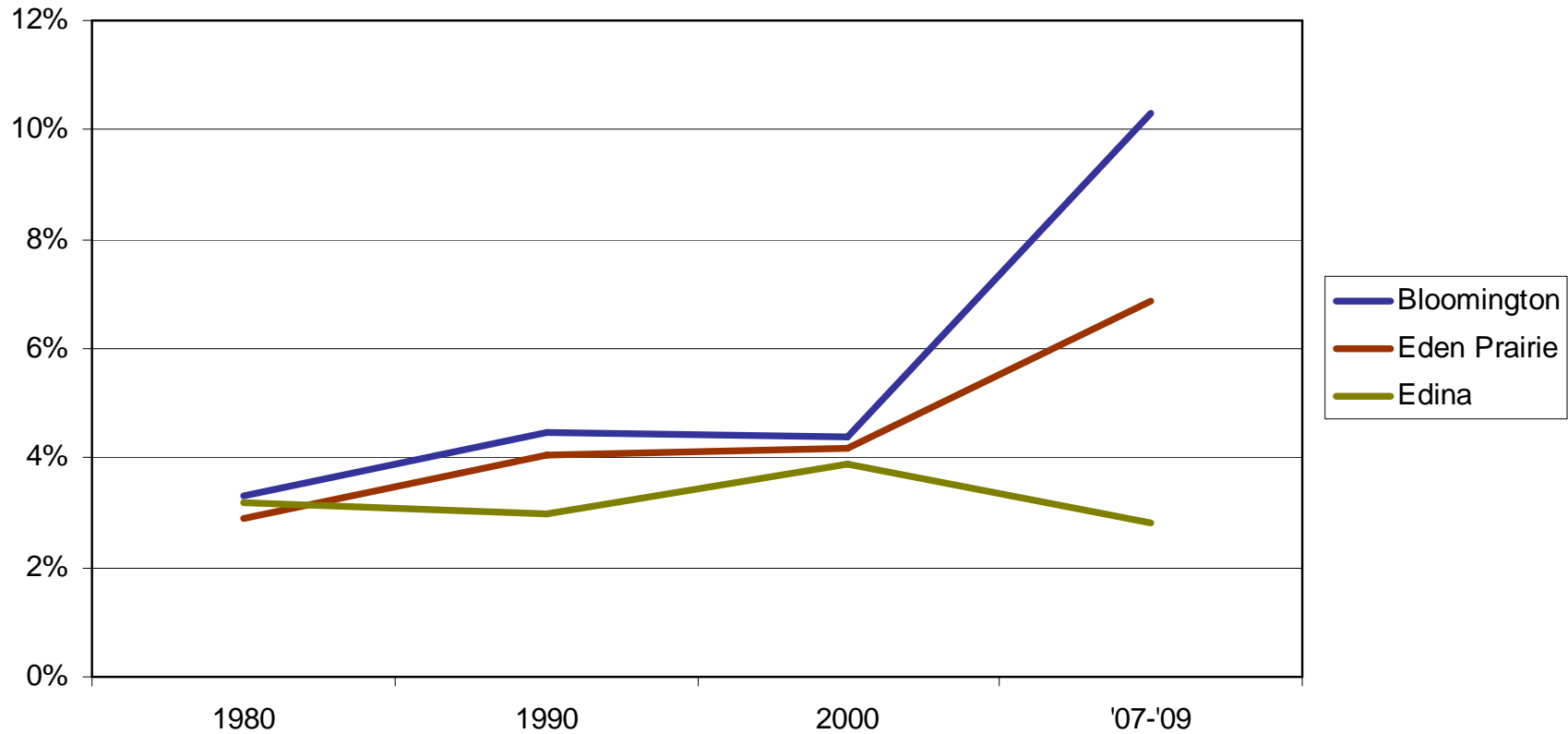




Children Living in Poverty

- The percentage of children living in poverty has increased in Bloomington and Eden Prairie while it is at its lowest level in almost 30 years in Edina

Children Living in Poverty

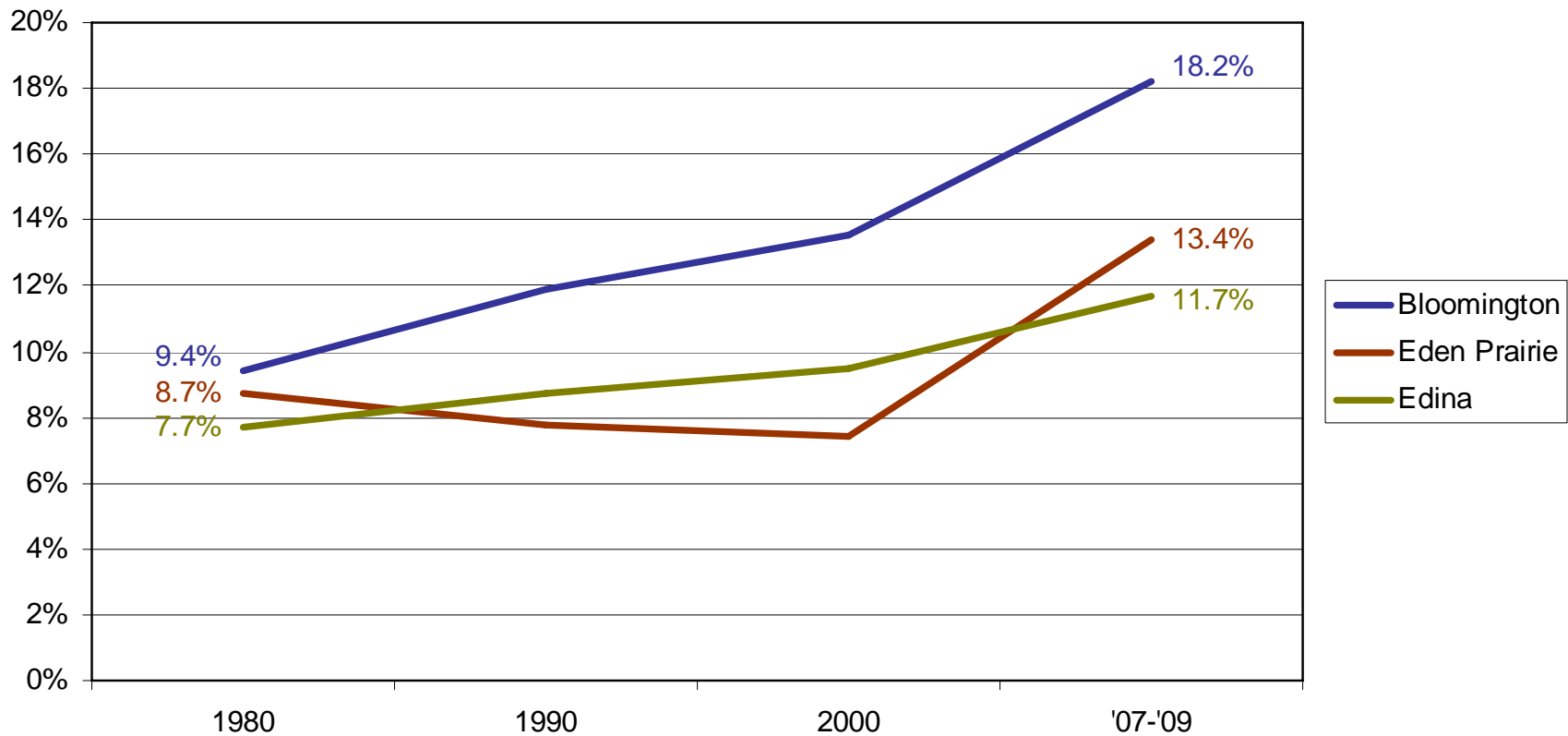




The “Working Poor” Population

- The percentage of the population living under 200% of poverty has increased in all three cities

Population Living under 200% of Poverty

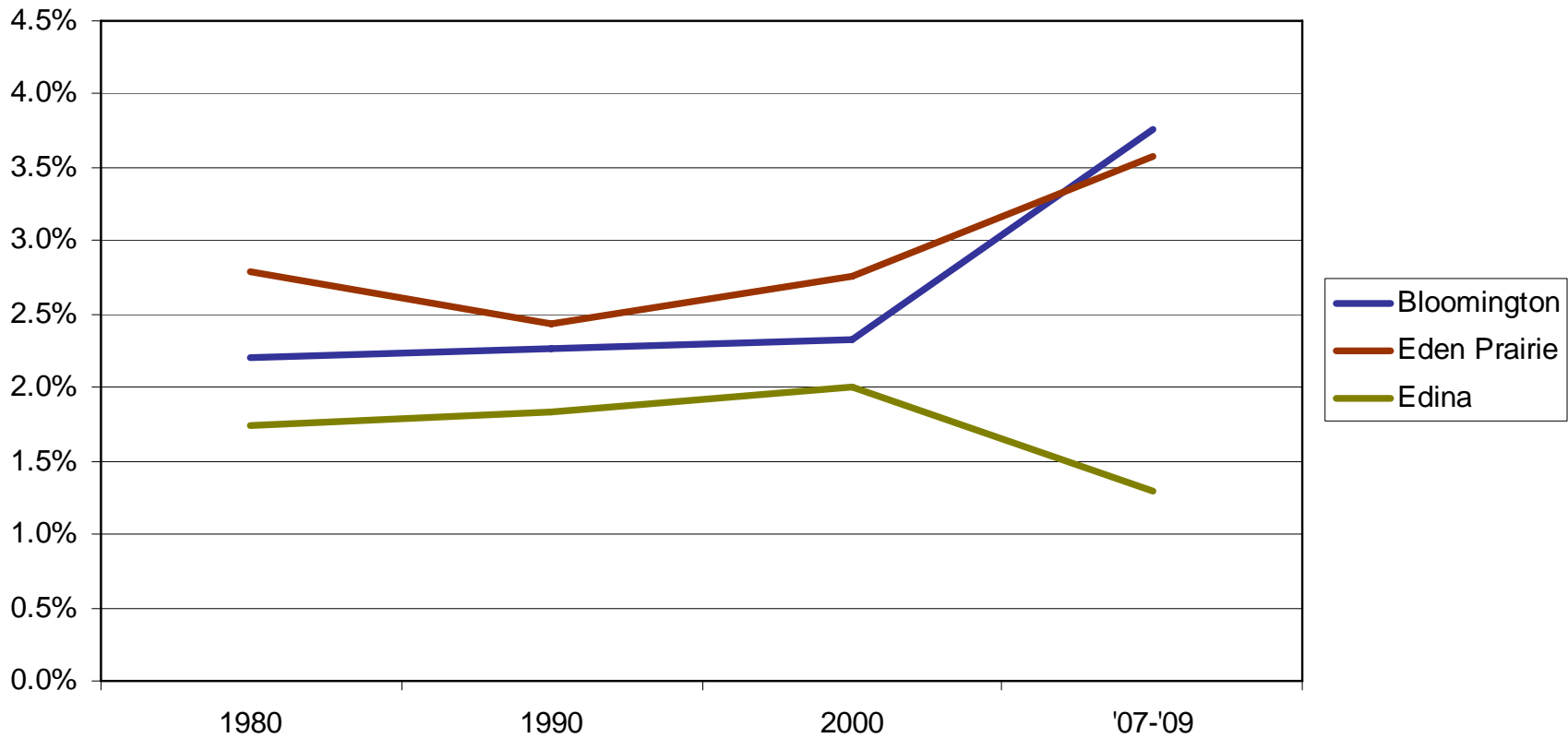




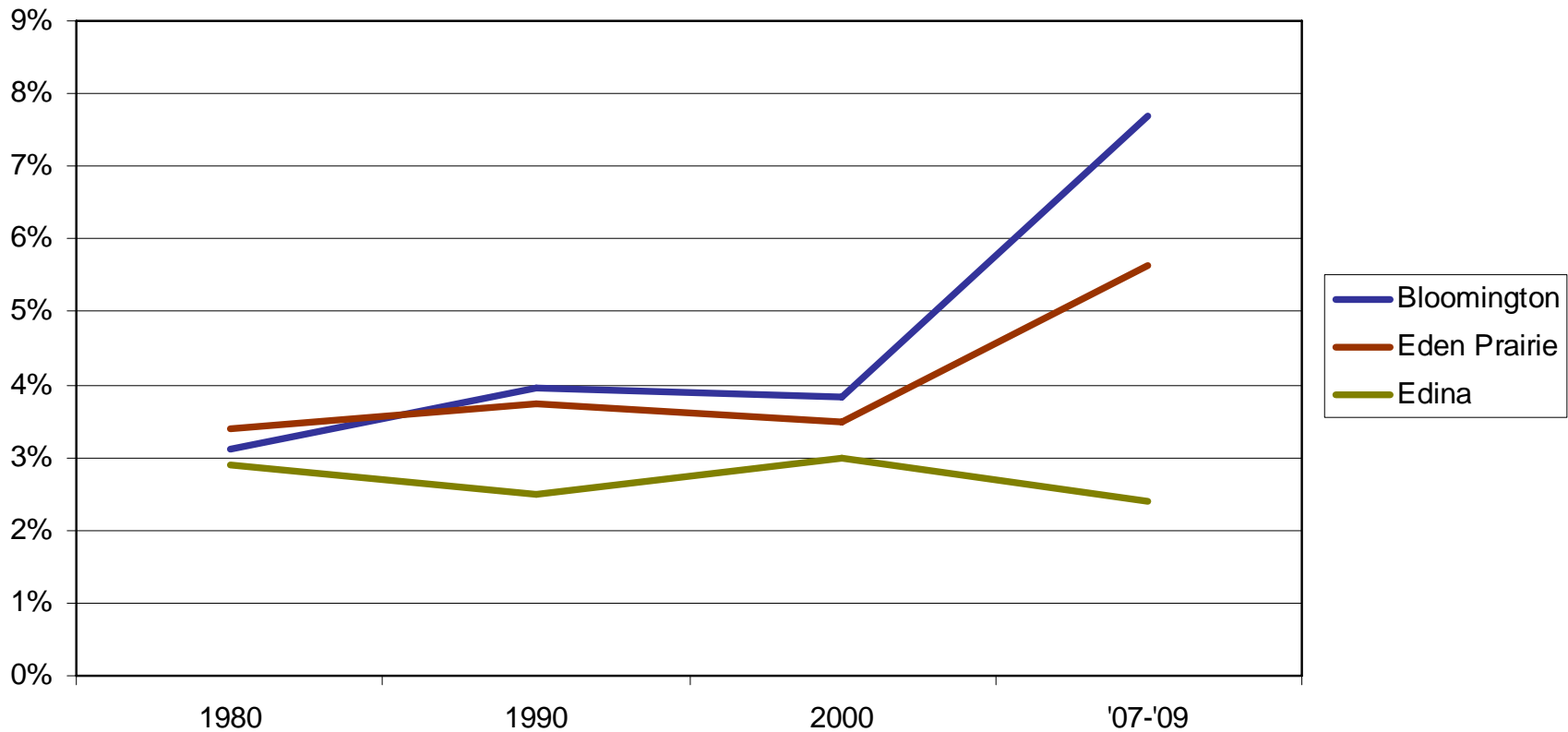
Families Living in Poverty

- The percentage of families living in poverty and the percentage of families with children living in poverty have increased in Bloomington and Eden Prairie while they are both at their lowest levels in almost 30 years in Edina

Families Living in Poverty



Families With Children Living in Poverty

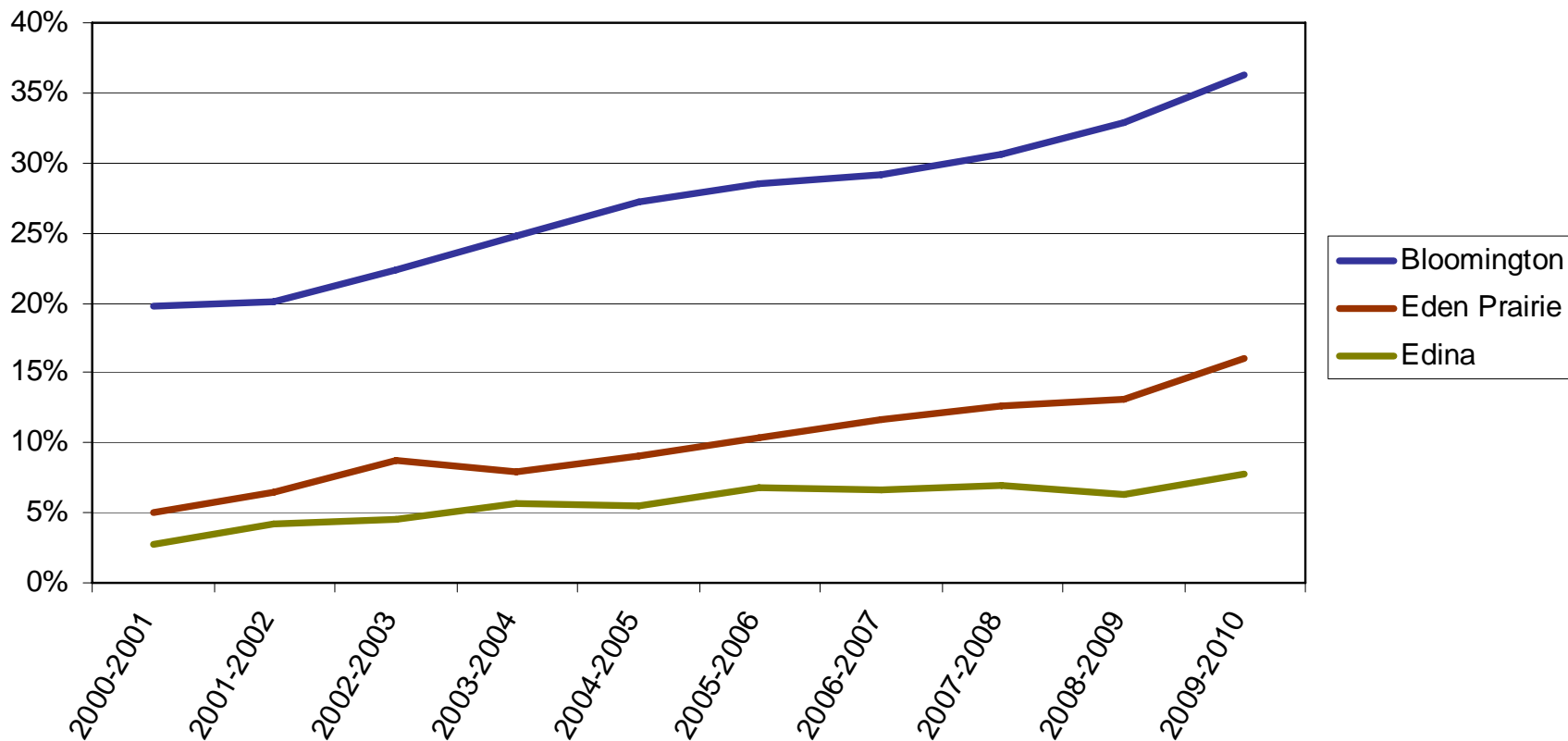




Free or Reduced Lunch Eligibility

- The percentage of K-12 children eligible for free or reduced lunch has increased in all three cities

Free or Reduced Lunch Eligibility



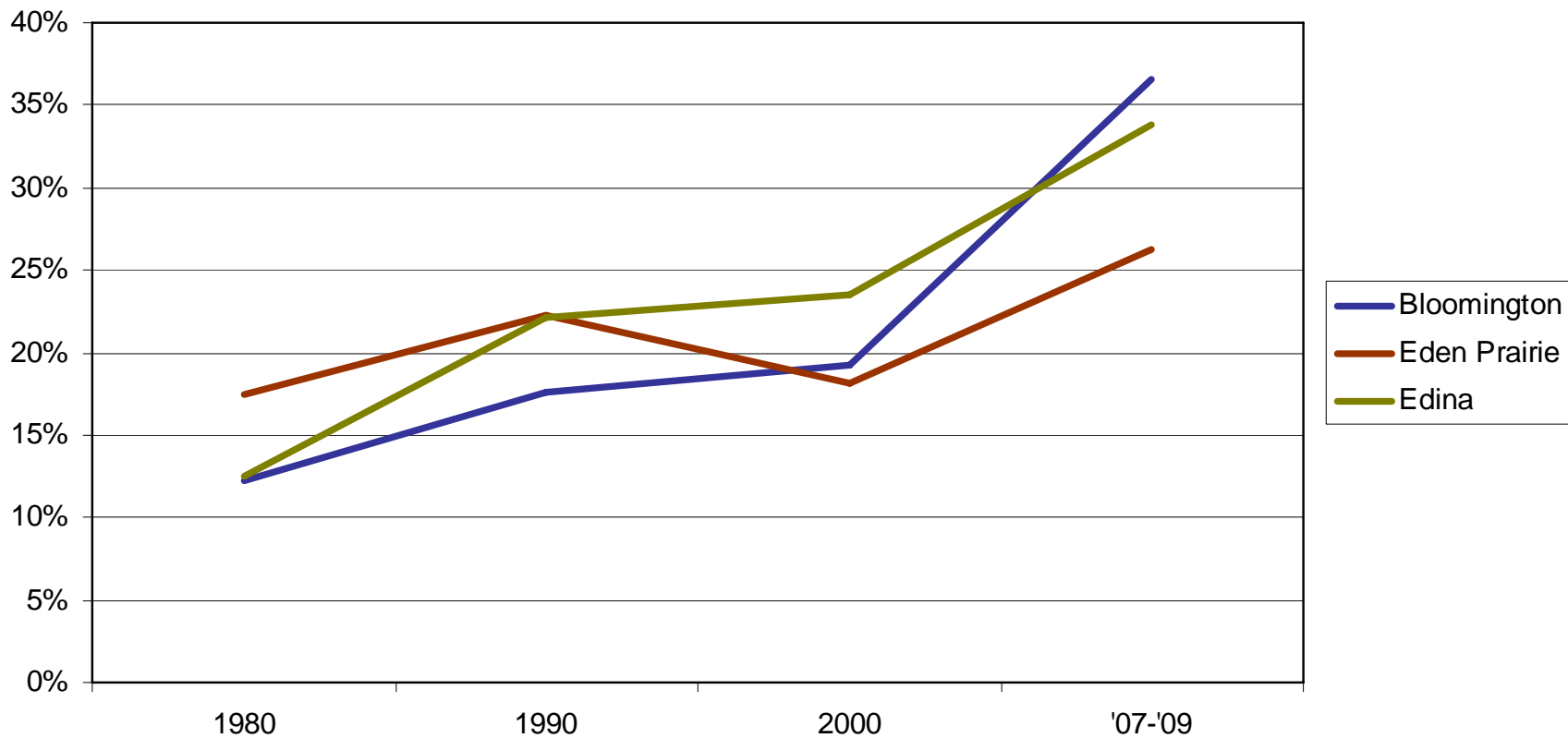


Cost Burdened Homeowners

- The percentage of homeowners with a mortgage who are cost burdened* has increased in all three cities

* According to the U.S. Department of Housing and Urban Development, households that spend more than 30% of their income on housing costs are considered cost burdened and may have difficulty affording necessities such as food, clothing, transportation, and medical care.

Cost Burdened Homeowners

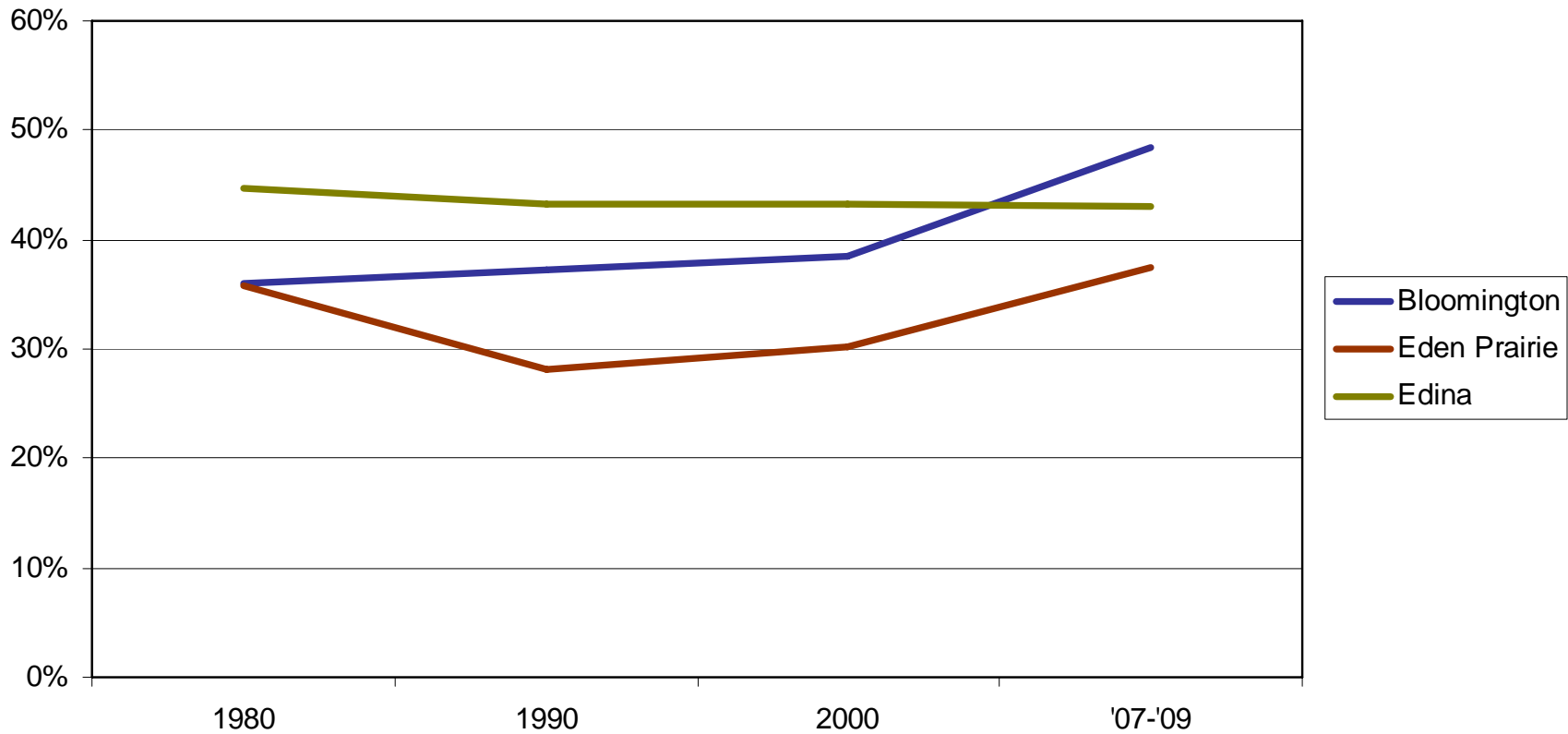




Cost Burdened Renters

- The percentage of renters who are cost burdened has increased in Bloomington and Eden Prairie but has remained fairly steady in Edina

Cost Burdened Renters

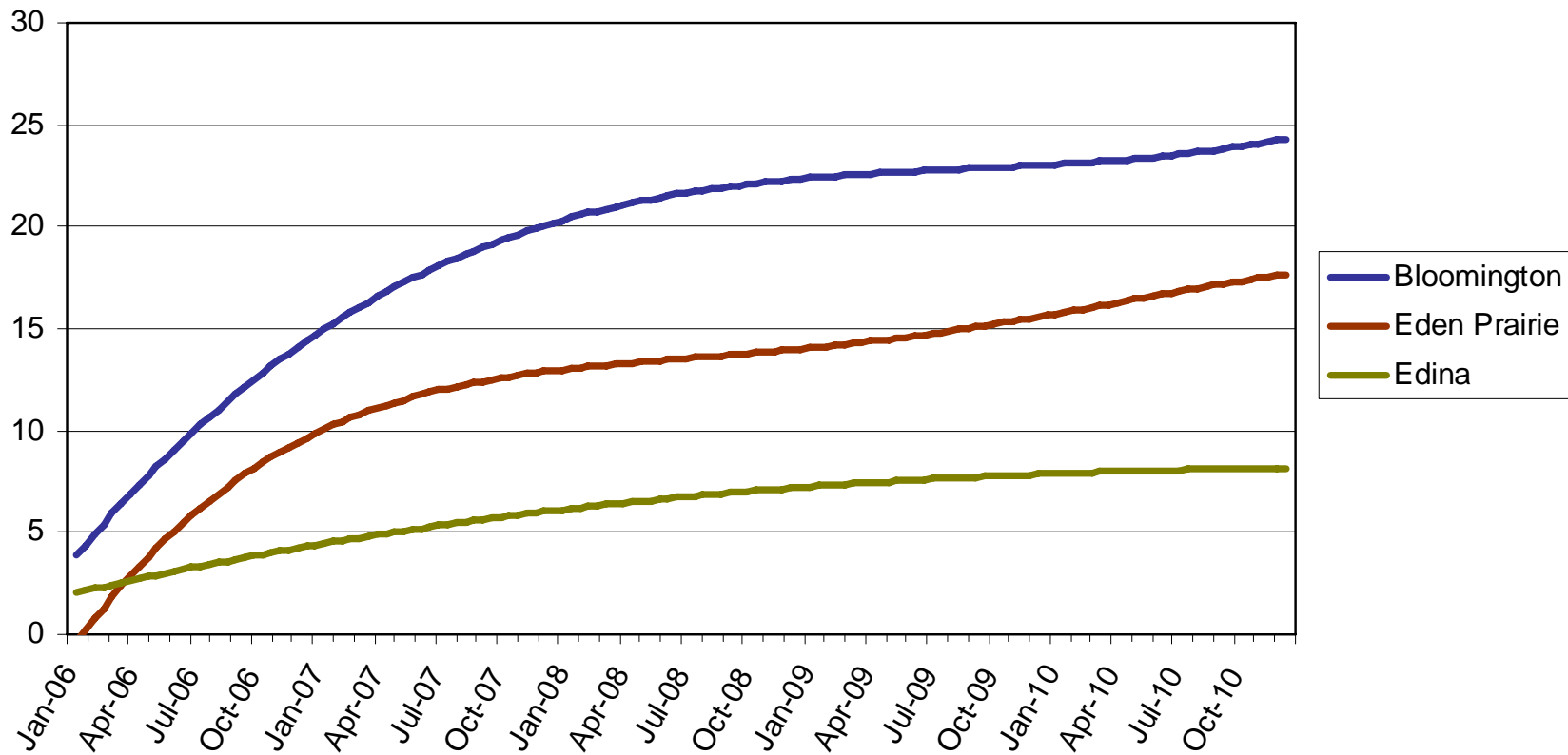




Mortgage Foreclosure Auctions

- The number of mortgage foreclosure auctions continue to increase in all three cities

Trendlines for Monthly Mortgage Foreclosure Auctions





Contact information

Daryl Coppoletti

Regional Planning Coordinator

Hennepin South Services Collaborative

952-922-5999 ex. 12

daryl.coppoletti@hsscmn.org

www.hsscmn.org