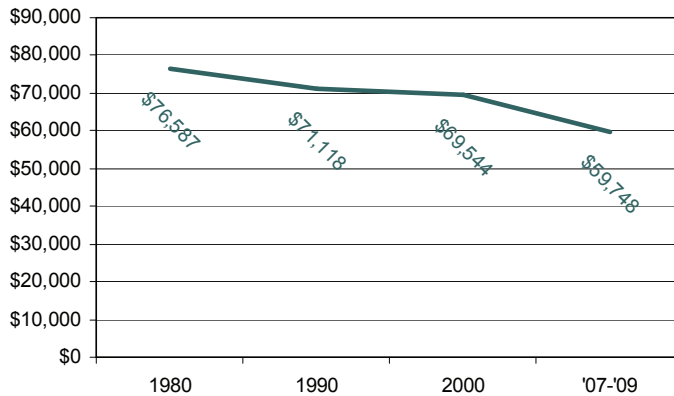


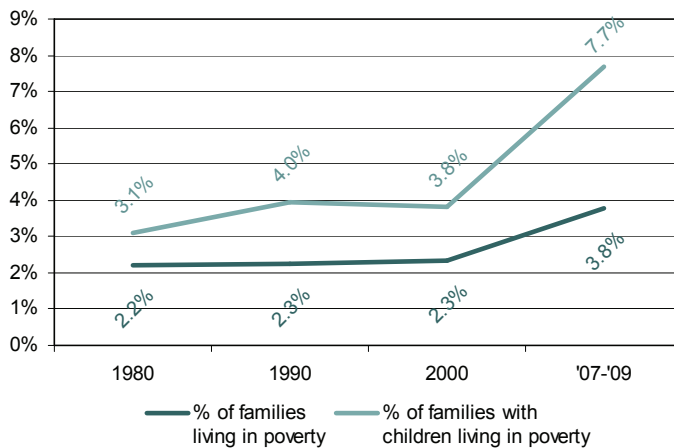
Fact Sheet

ON LOW INCOME RESIDENTS OF BLOOMINGTON

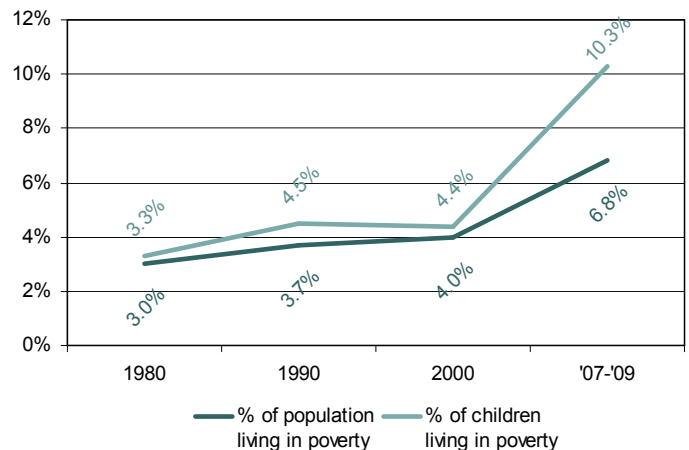
Households are earning less money: median household income (in 2009 dollars) has decreased 14% since 2000 and 22% since 1980.



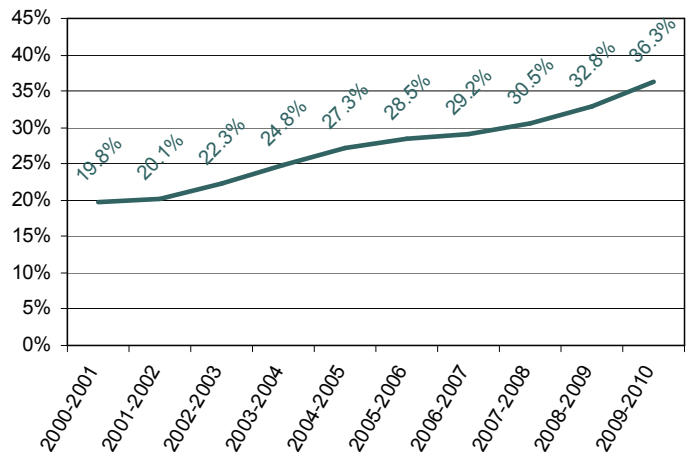
More families are living in poverty: the percentage of families living in poverty has increased 61% since 2000 and 71% since 1980 while the percentage of families with children living in poverty has increased 101% since 2000 and 148% since 1980.



More people are living in poverty: the percentage of the population living in poverty has increased 71% since 2000 and 128% since 1980 while the percentage of children living in poverty has increased 134% since 2000 and 210% since 1980.



And more children are qualifying for free or reduced lunch: the percentage of K-12 children eligible for free or reduced lunch has increased 83% since the 2000-2001 school year.



Prepared by the
Hennepin South Services Collaborative
www.hsscmn.org

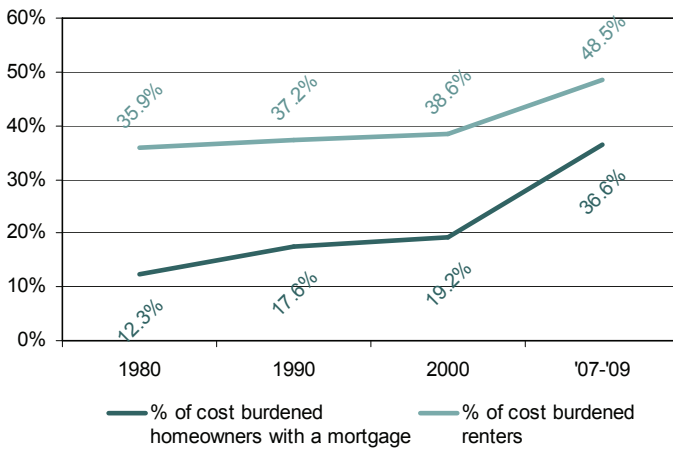
~ April 2011 ~

Data Sources: U.S. Census Bureau,
Minnesota Department of Education,
and Hennepin County Sheriff's Office

Fact Sheet

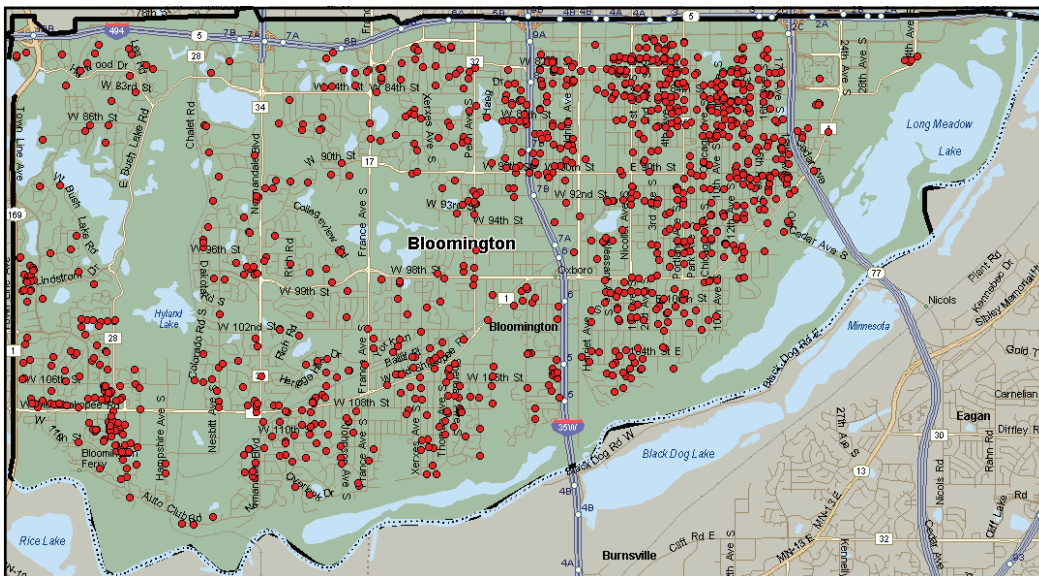
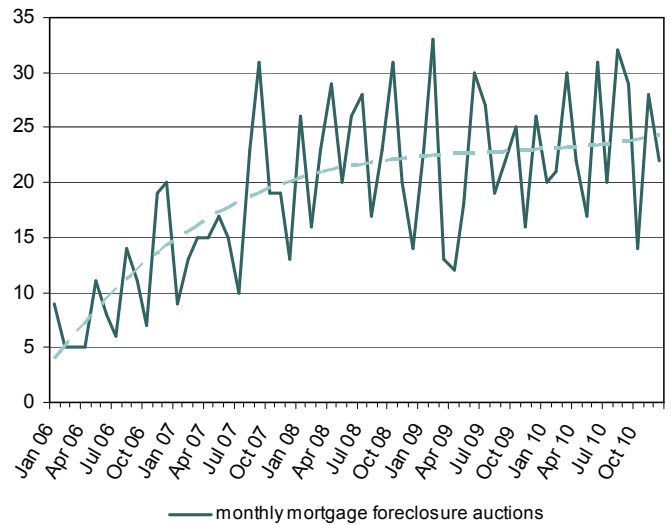
ON LOW INCOME RESIDENTS OF BLOOMINGTON

More households are cost burdened* by housing costs: the percentage of homeowners with a mortgage who are cost burdened has increased 90% since 2000 and 197% since 1980 while the percentage of renters who are cost burdened has increased 26% since 2000 and 35% since 1980.



* According to the U.S. Department of Housing and Urban Development, households that spend more than 30% of their income on housing costs are considered cost burdened and may have difficulty affording necessities such as food, clothing, transportation, and medical care.

And foreclosures continue to increase: the number of mortgage foreclosure auctions has increased from 19 in the first quarter of 2006 to 64 in the fourth quarter of 2010, an increase of 237%.



Distribution of mortgage foreclosure auctions from January 1, 2006, through December 31, 2010 (N = 1,142)