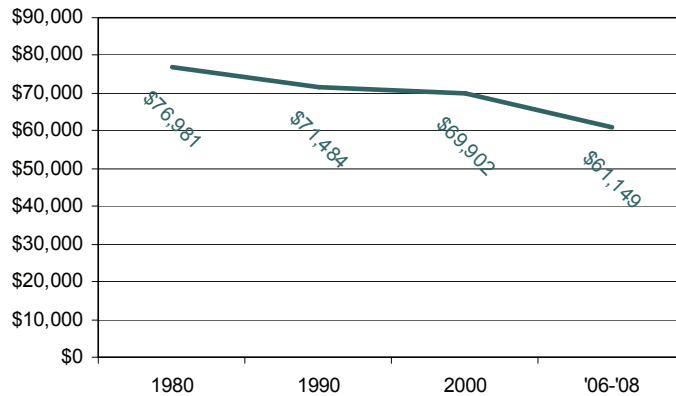


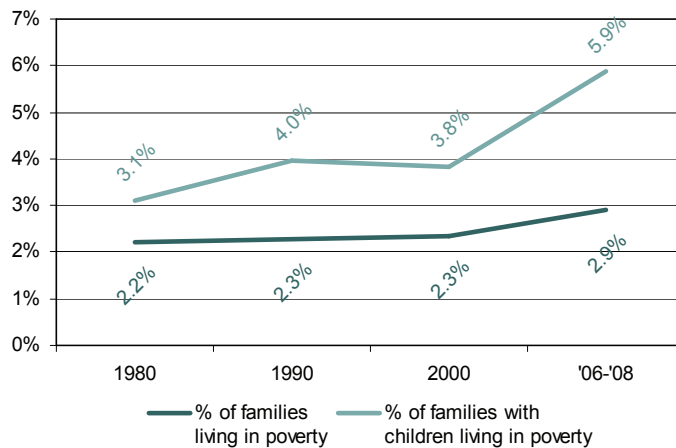
Fact Sheet

ON LOW INCOME RESIDENTS OF BLOOMINGTON

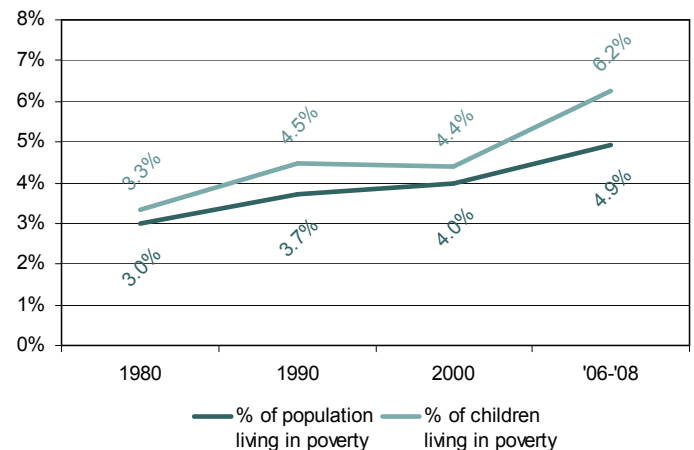
Households are earning less money: median household income (in 2008 dollars) has decreased 13% since 2000 and 21% since 1980.



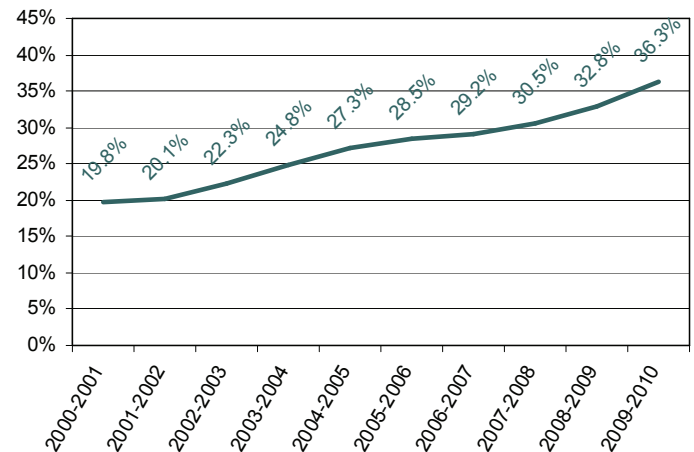
More families are living in poverty: the percentage of families living in poverty has increased 27% since 2000 and 32% since 1980 while the percentage of families with children living in poverty has increased 54% since 2000 and 90% since 1980.



More people are living in poverty: the percentage of the population living in poverty has increased 25% since 2000 and 66% since 1980 while the percentage of children living in poverty has increased 42% since 2000 and 88% since 1980.



And more children are qualifying for free or reduced lunch: the percentage of K-12 children eligible for free or reduced lunch has increased 83% since the 2000-2001 school year.

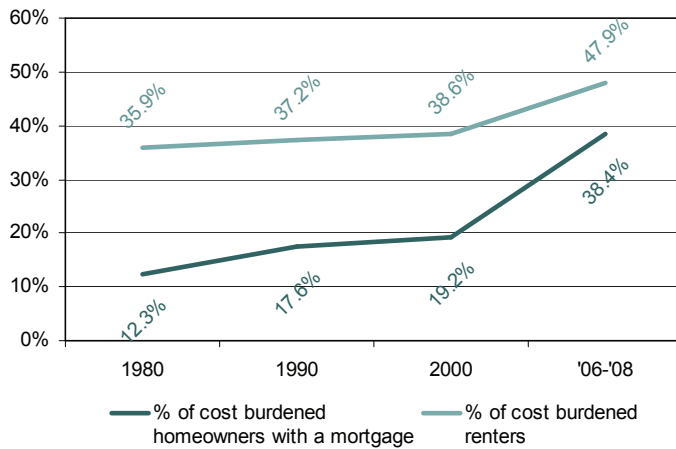


Prepared by the
 Hennepin South Services Collaborative
www.hsscmn.org
 ~ December 2010 ~
 Data Sources: U.S. Census Bureau,
 Minnesota Department of Education,
 and Hennepin County Sheriff's Office

Fact Sheet

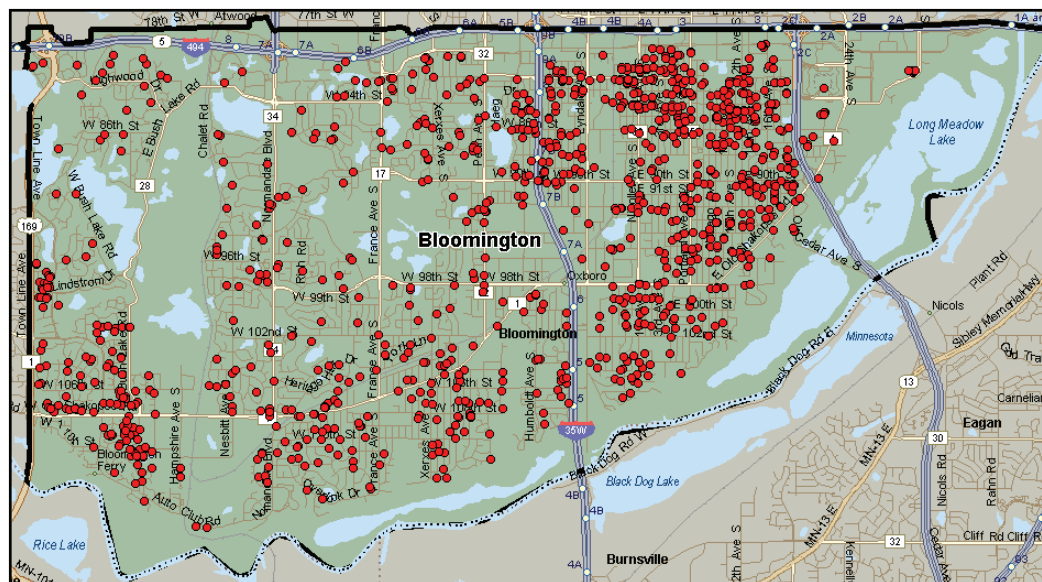
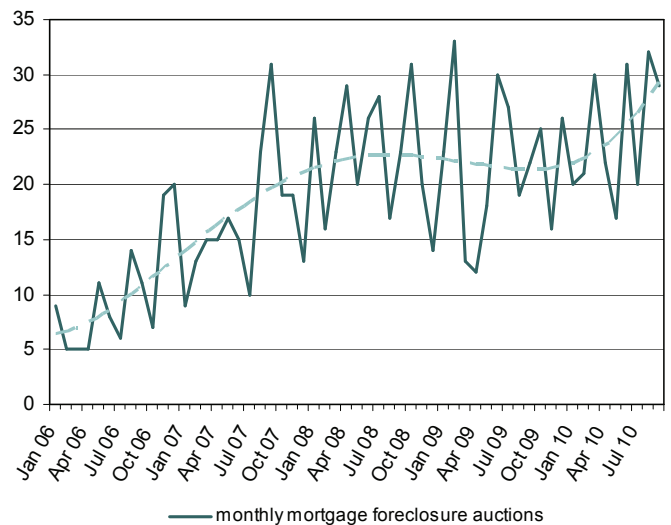
ON LOW INCOME RESIDENTS OF BLOOMINGTON

More households are cost burdened* by housing costs: the percentage of homeowners with a mortgage who are cost burdened has increased 100% since 2000 and 213% since 1980 while the percentage of renters who are cost burdened has increased 24% since 2000 and 33% since 1980.



* According to the U.S. Department of Housing and Urban Development, households that spend more than 30% of their income on housing costs are considered cost burdened and may have difficulty affording necessities such as food, clothing, transportation, and medical care.

And foreclosures continue to increase: the number of mortgage foreclosure auctions has increased from 19 in the first quarter of 2006 to 81 in the third quarter of 2010, an increase of 326%.



Distribution of mortgage foreclosure auctions from January 1, 2006, through September 30, 2010 (N = 1,078)