



Demographic, Social, and Economic Trends of Eden Prairie Residents: 1980-2007

Presented by the
Hennepin South Services Collaborative
August 25, 2009



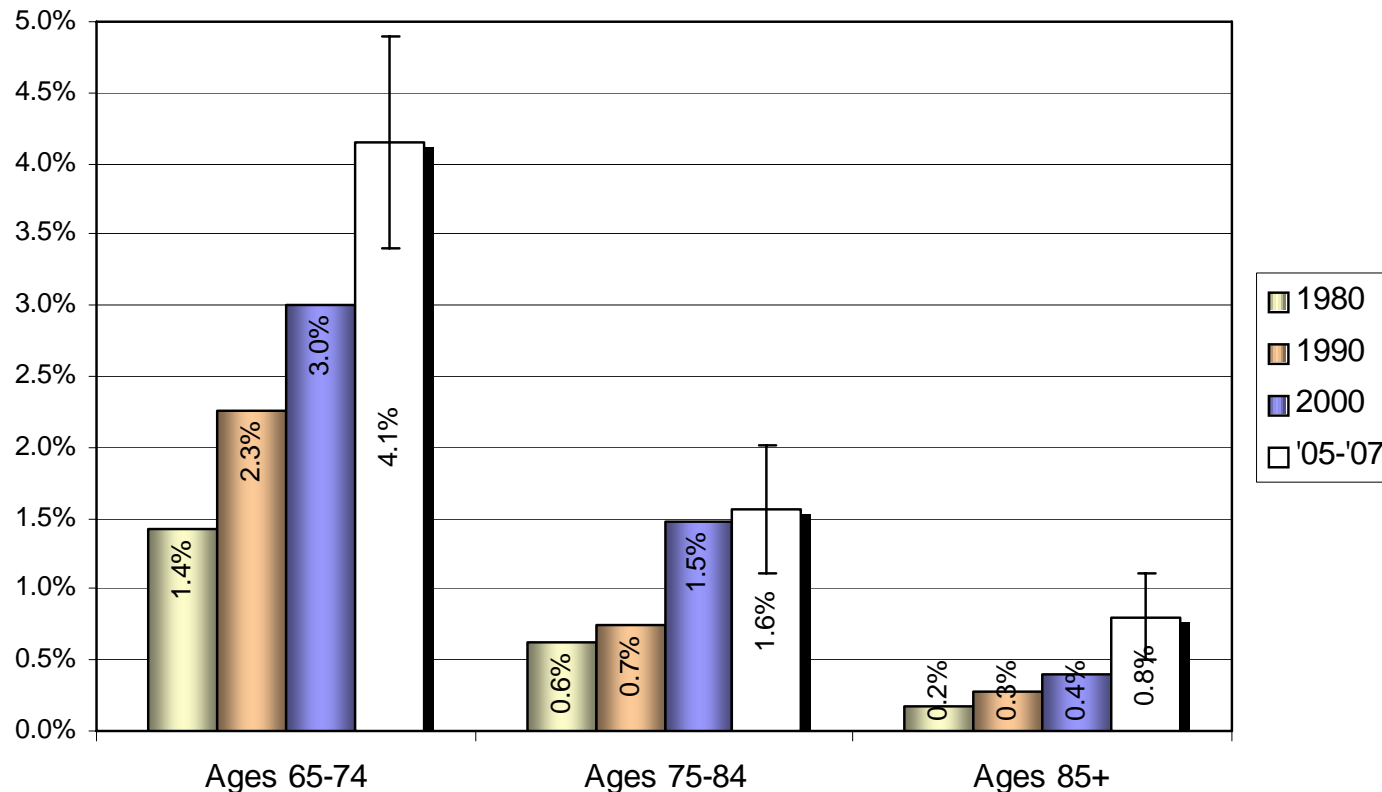
Introduction

- Sources of data
 - 1980, 1990 & 2000 U.S. Census
 - 2005-2007 American Community Survey (ACS)

	Census	ACS
frequency	<ul style="list-style-type: none">■ every 10 years	<ul style="list-style-type: none">■ every year since 2000■ 1-year datasets since 2005 and 3-year dataset of 2005-2007
coverage	<ul style="list-style-type: none">■ short form – <u>every</u> household*■ long form – 1 out of 6 households	<ul style="list-style-type: none">■ 3 million households
data	<ul style="list-style-type: none">■ actual counts	<ul style="list-style-type: none">■ estimates with margins of error■ 3-year datasets have averages

Introduction (cont.)

Example of data points falling inside and outside the margin of error

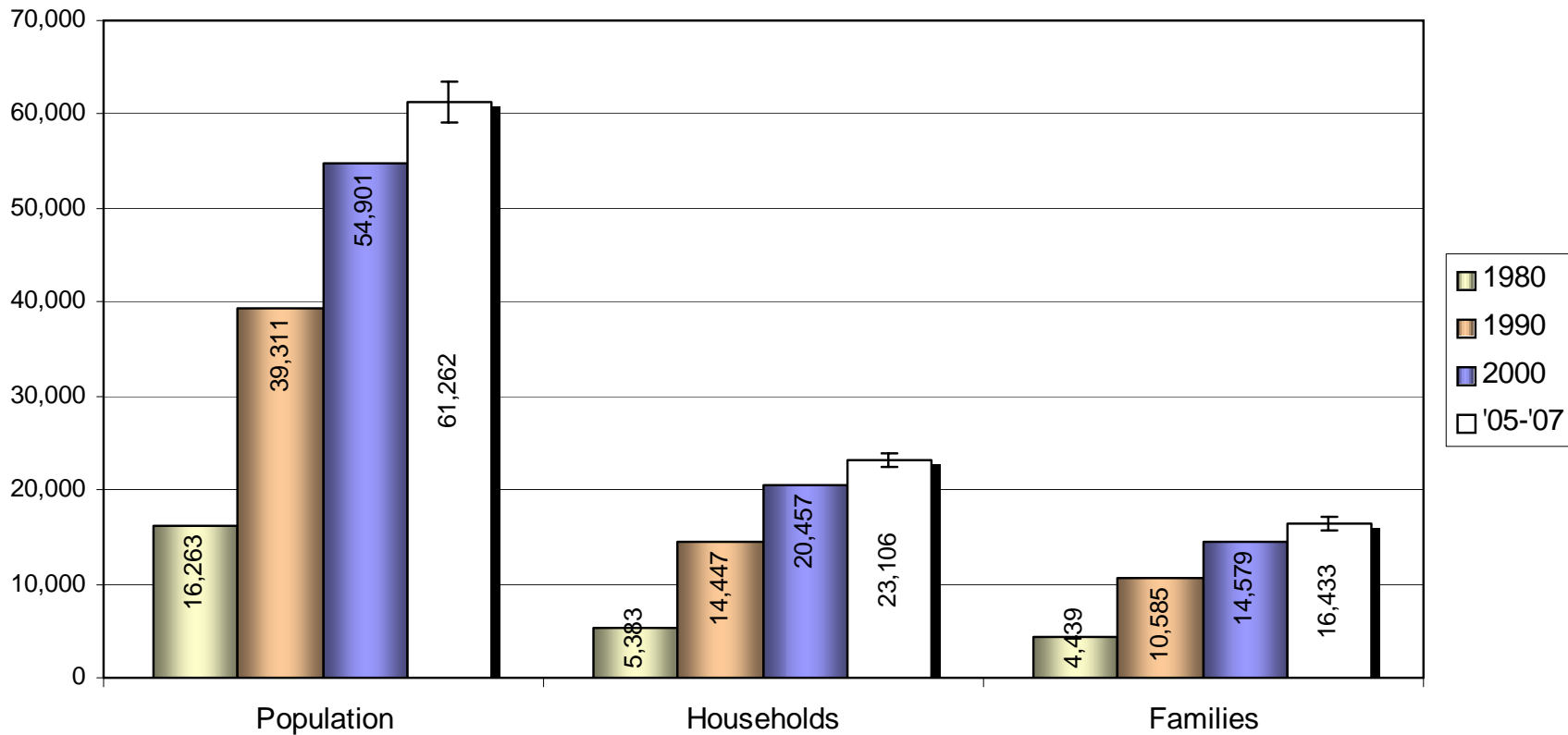




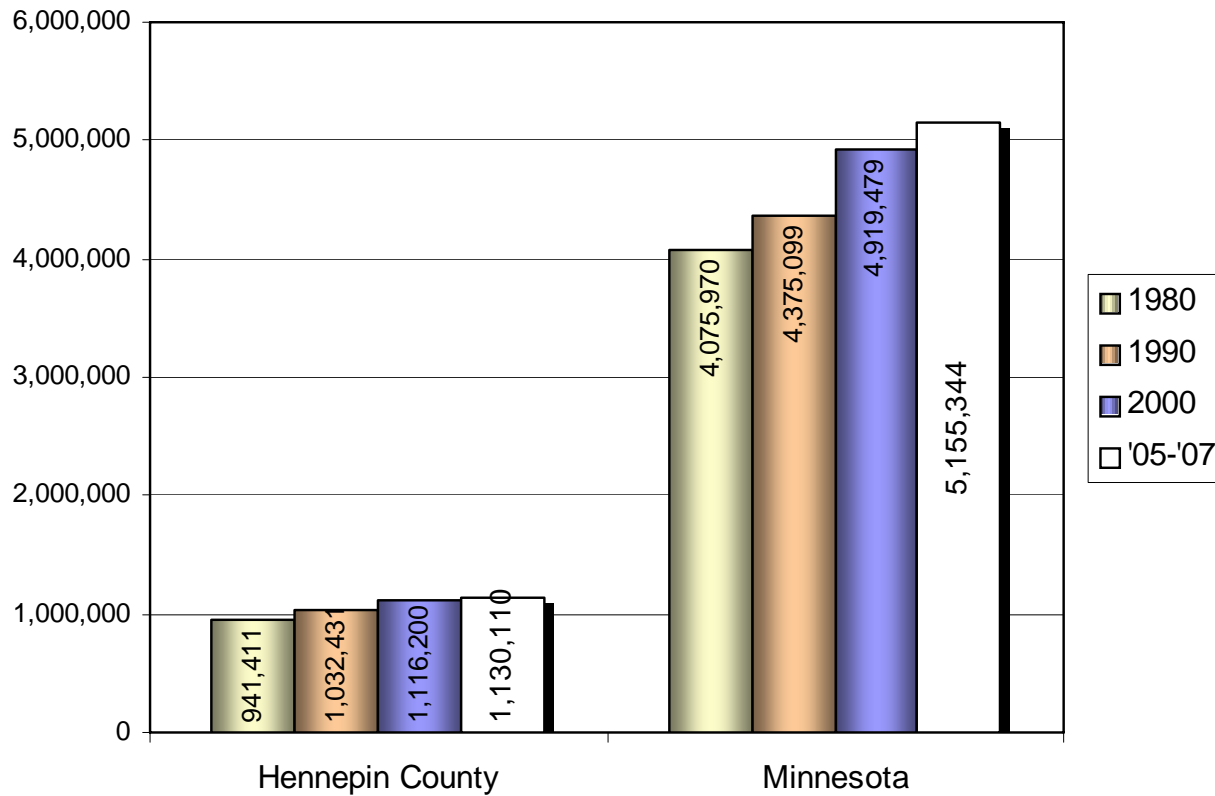
Introduction (cont.)

- Limitations of data
 - self-reported – unverified; dependent on memory
 - voluntary – non-reporting; undercounting
 - sample – smaller populations; influenced by “outliers”
- Intent/purpose of report: sourcebook of descriptive data trends; not “needs assessment”
- Definition section in report

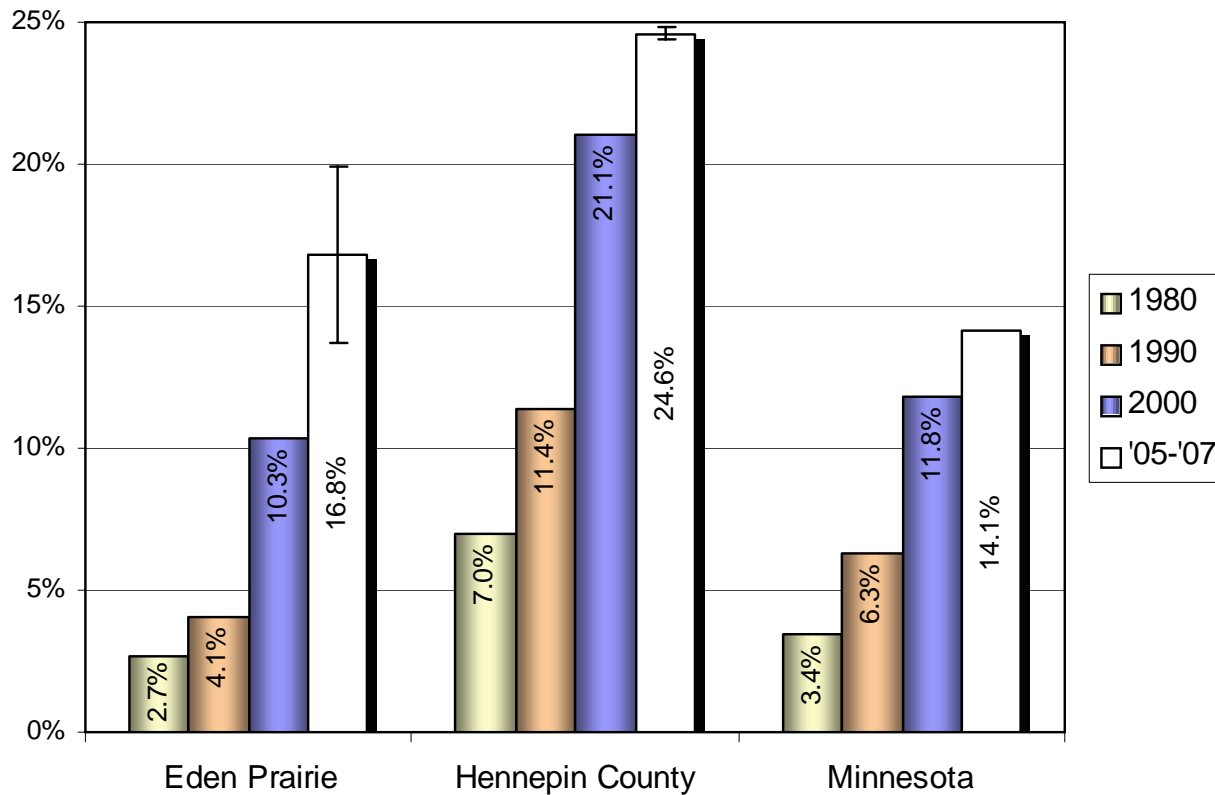
Population, Households, and Families



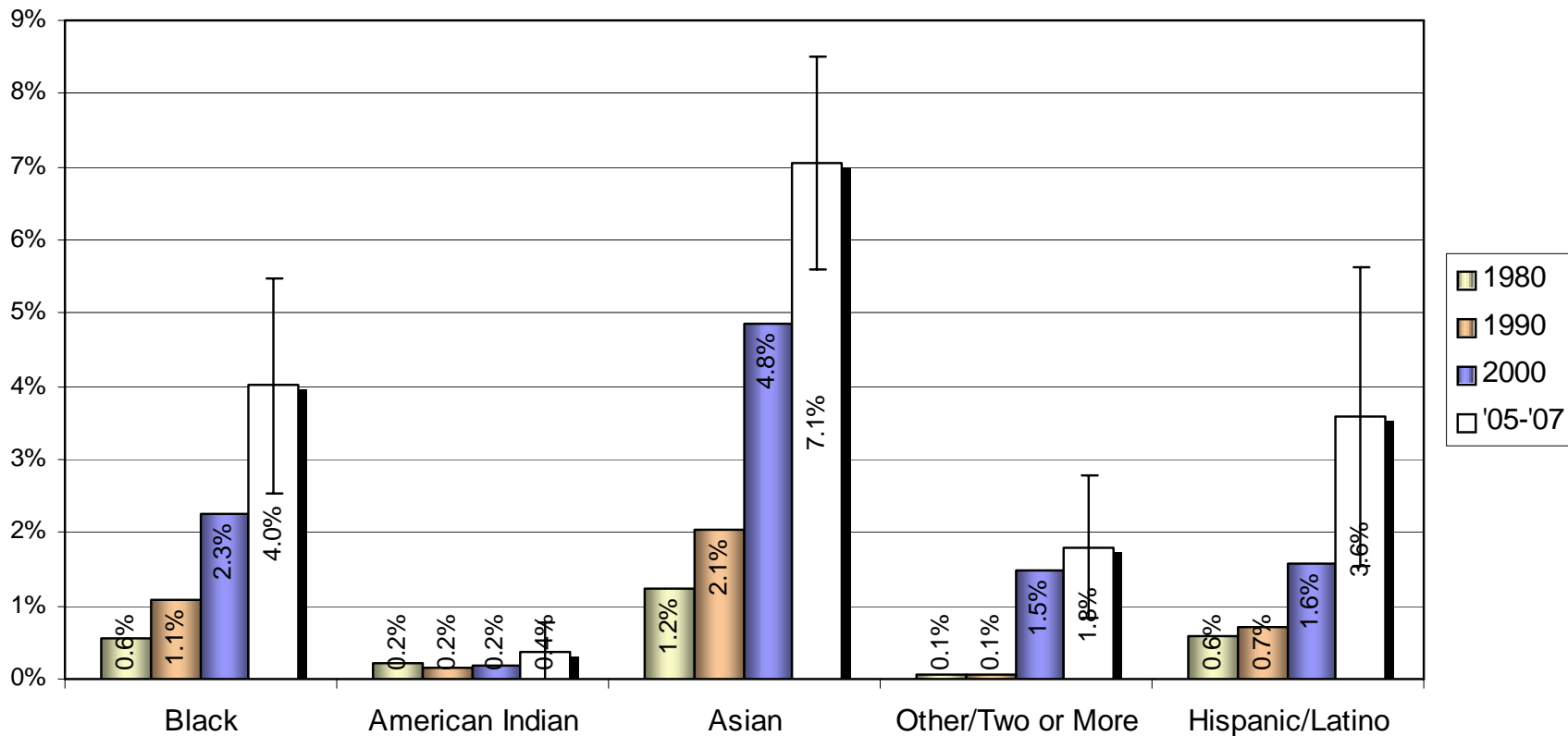
Population comparisons



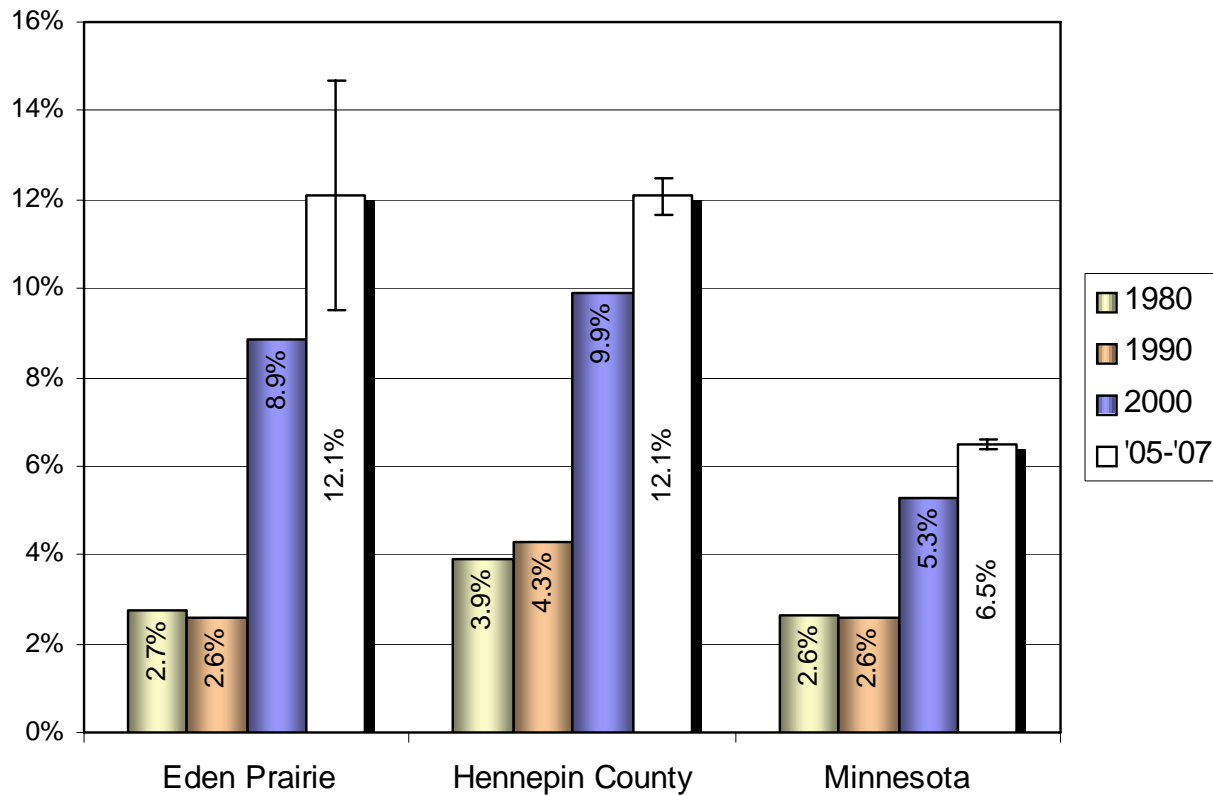
People of color as a percentage of the population



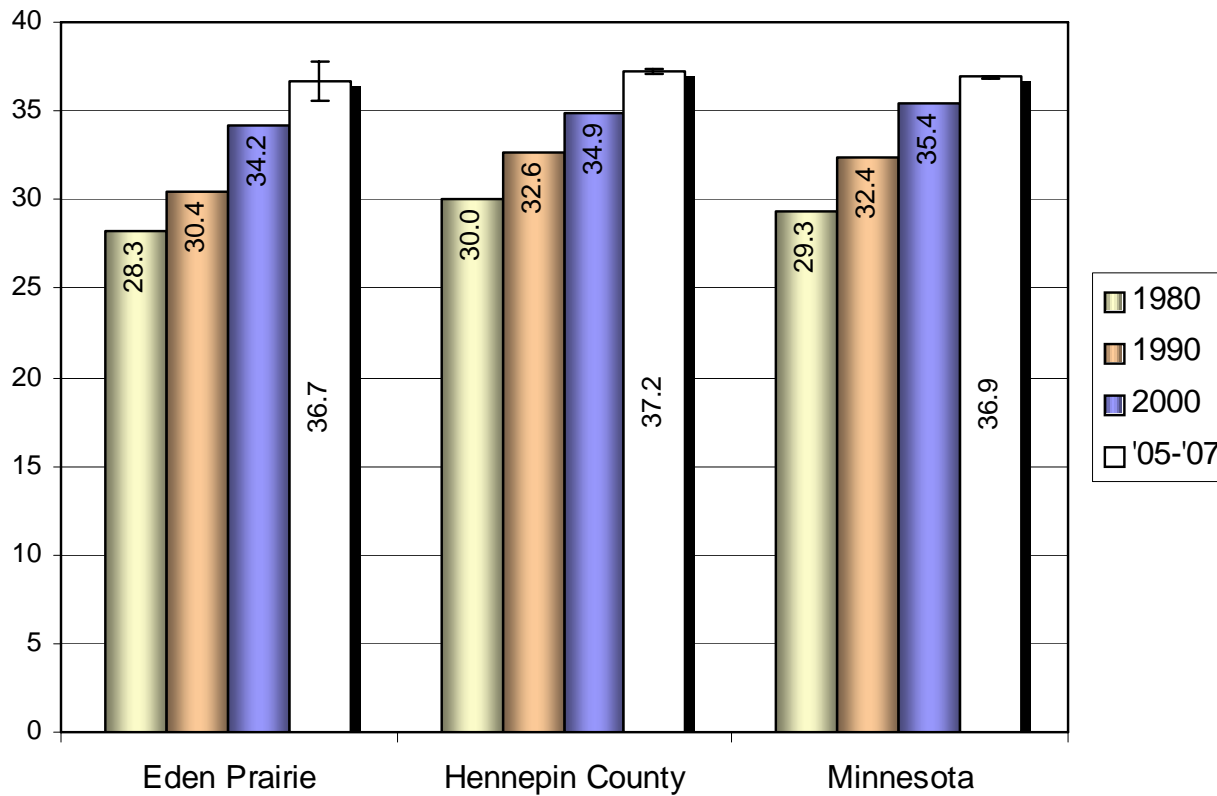
People of color as a percentage of the population by race/ethnicity



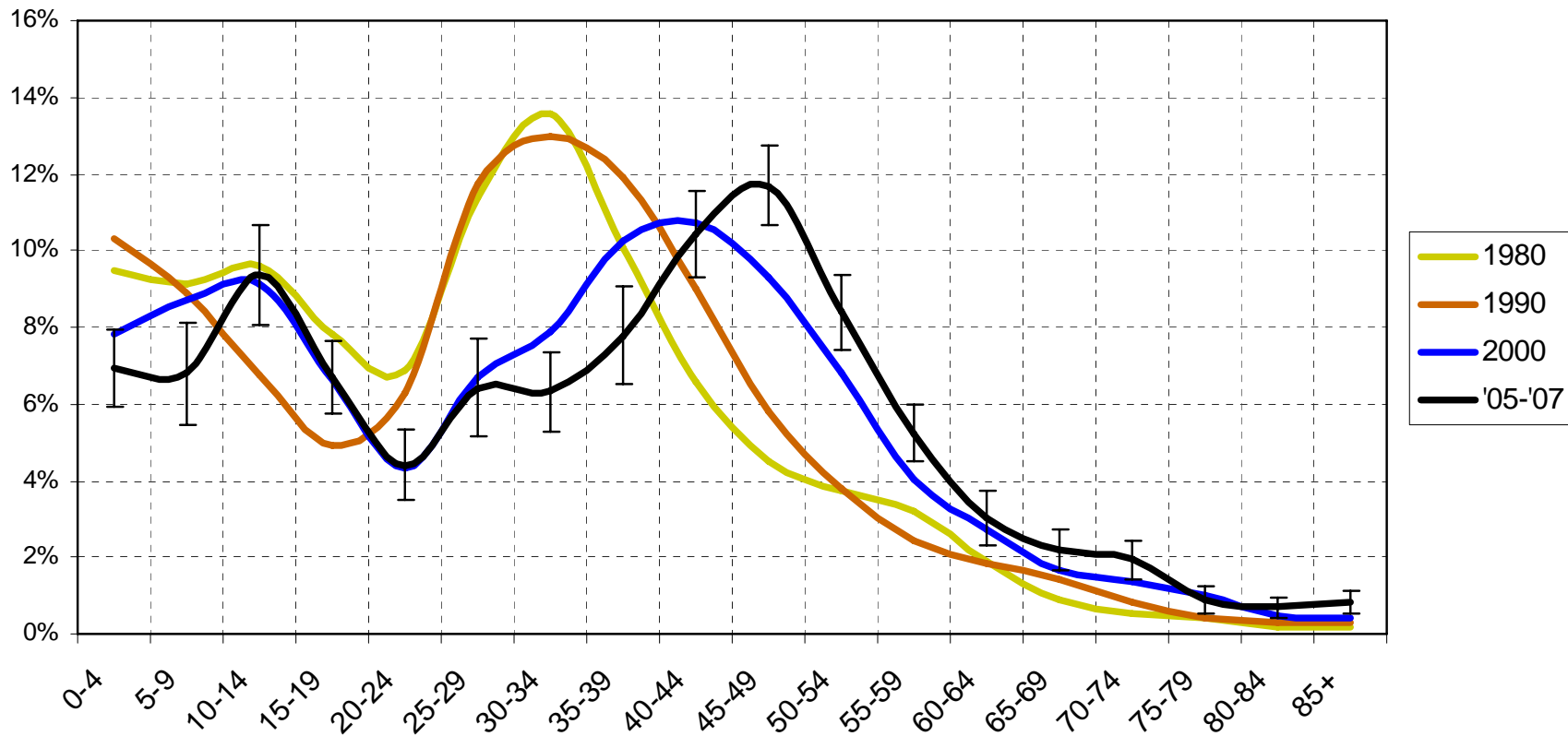
Foreign-born population



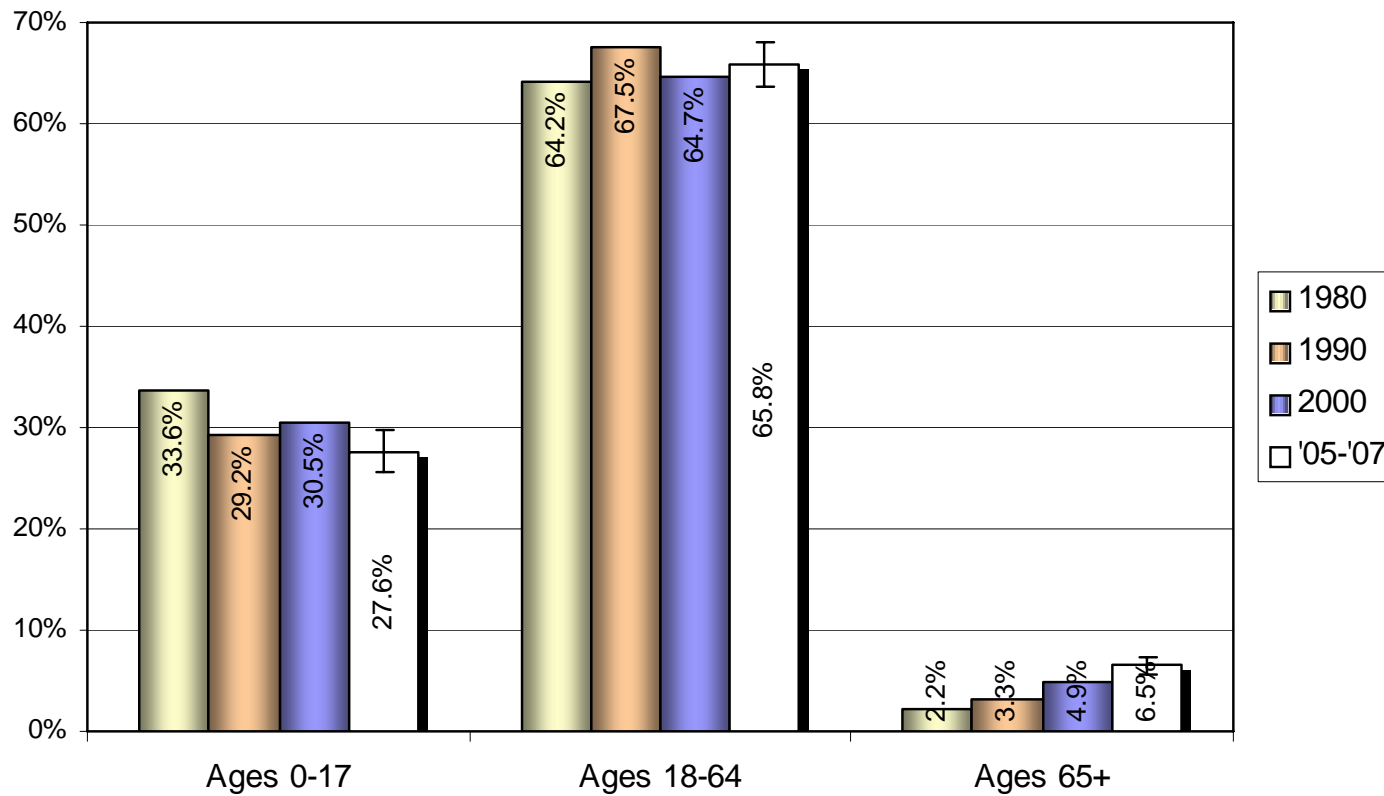
Median Age



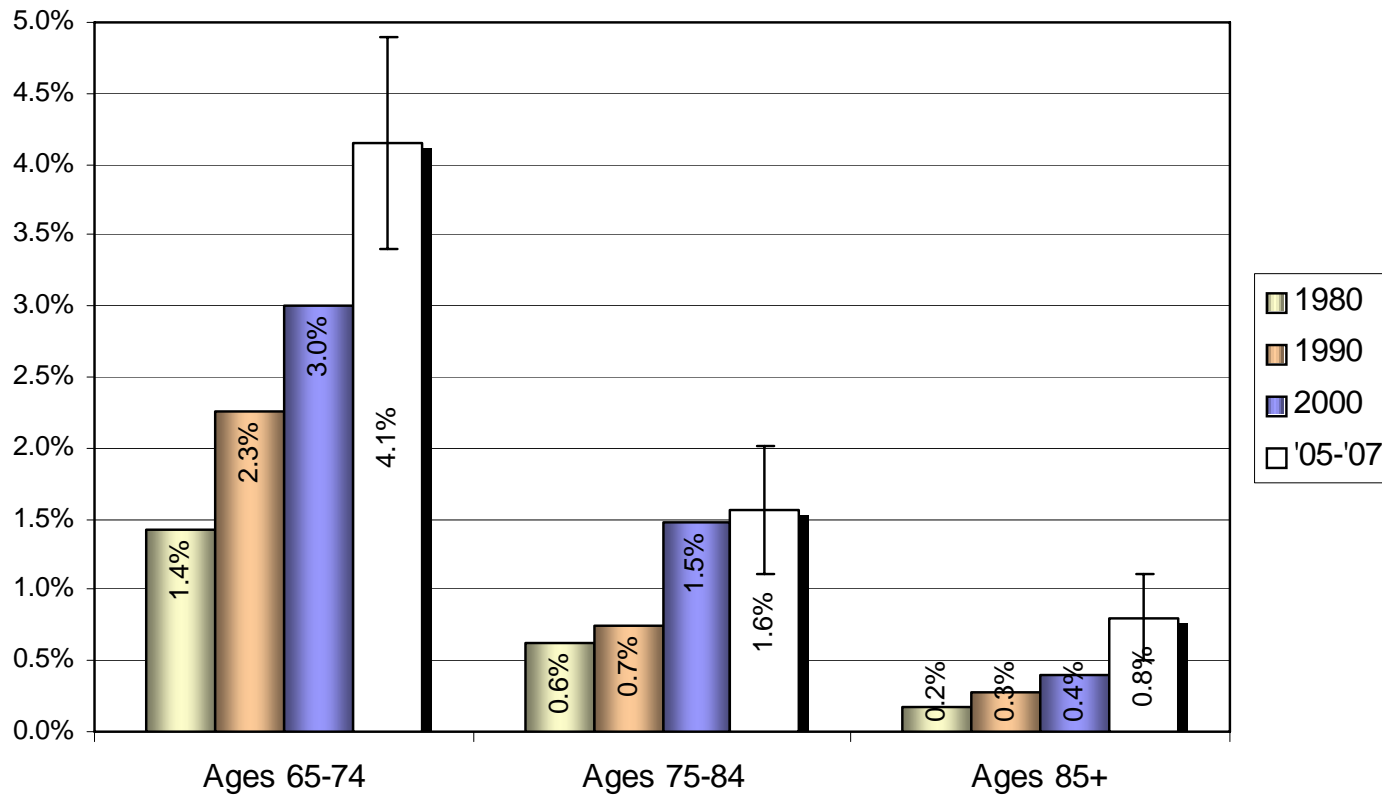
Distribution of population by age



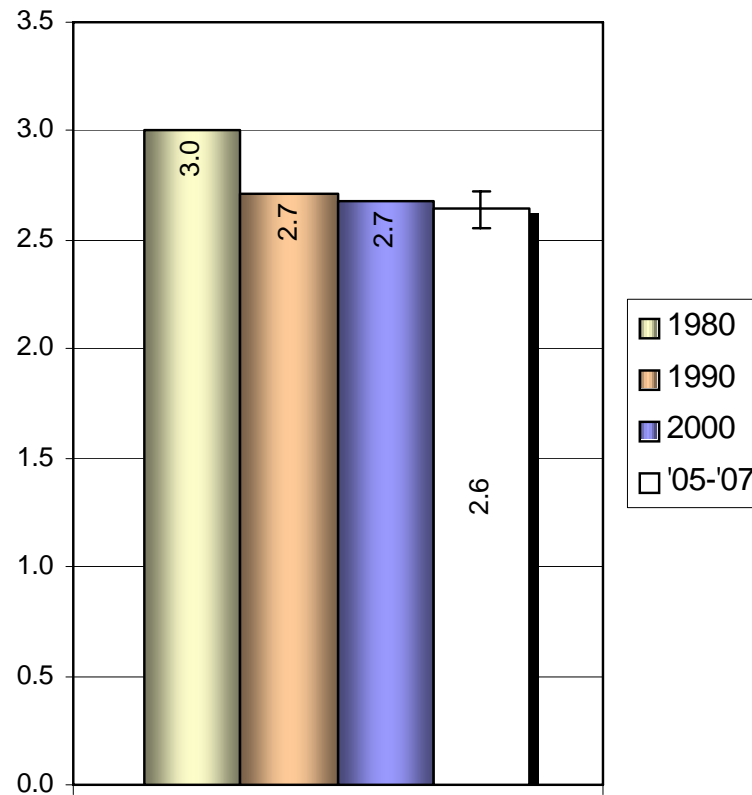
Age composition



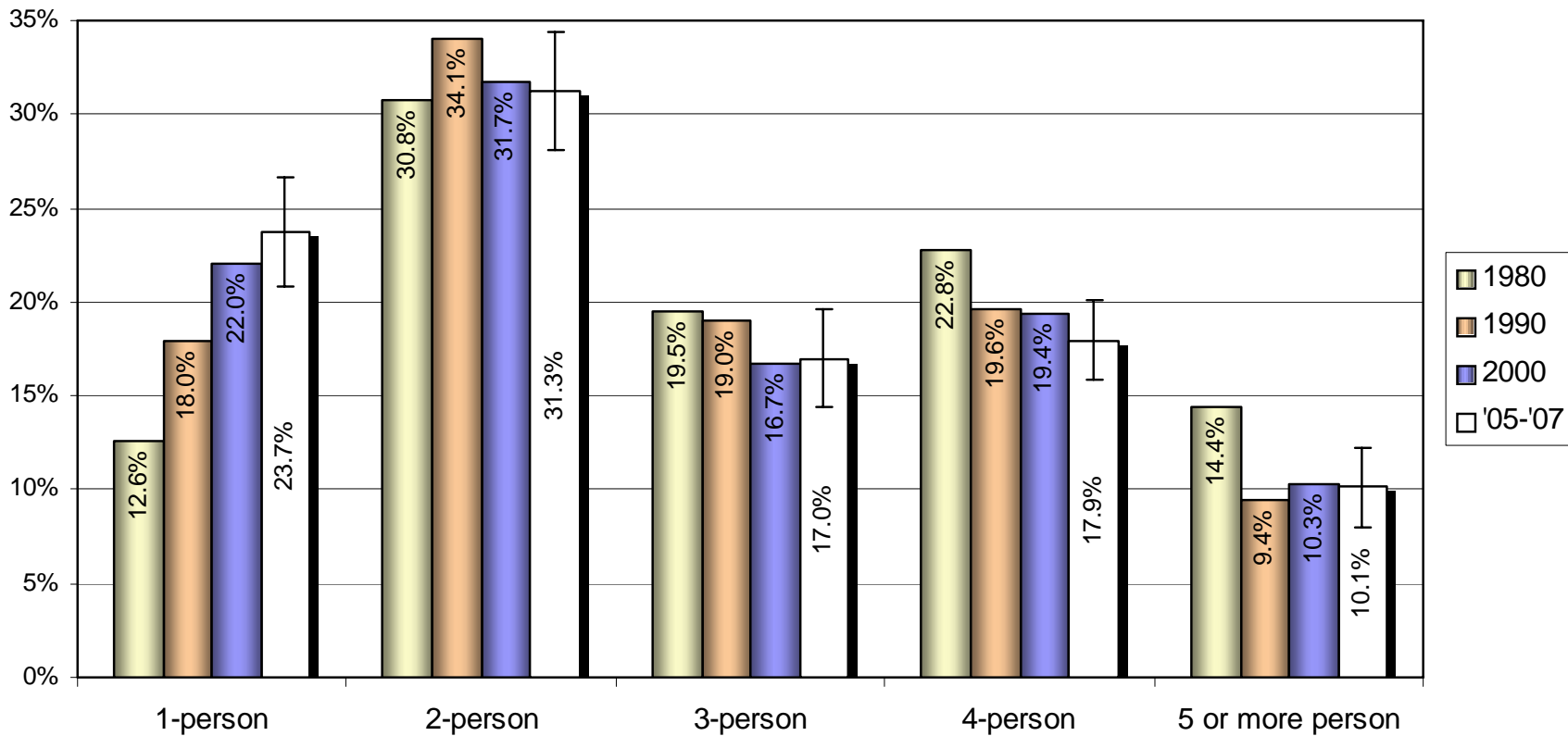
The growing senior population



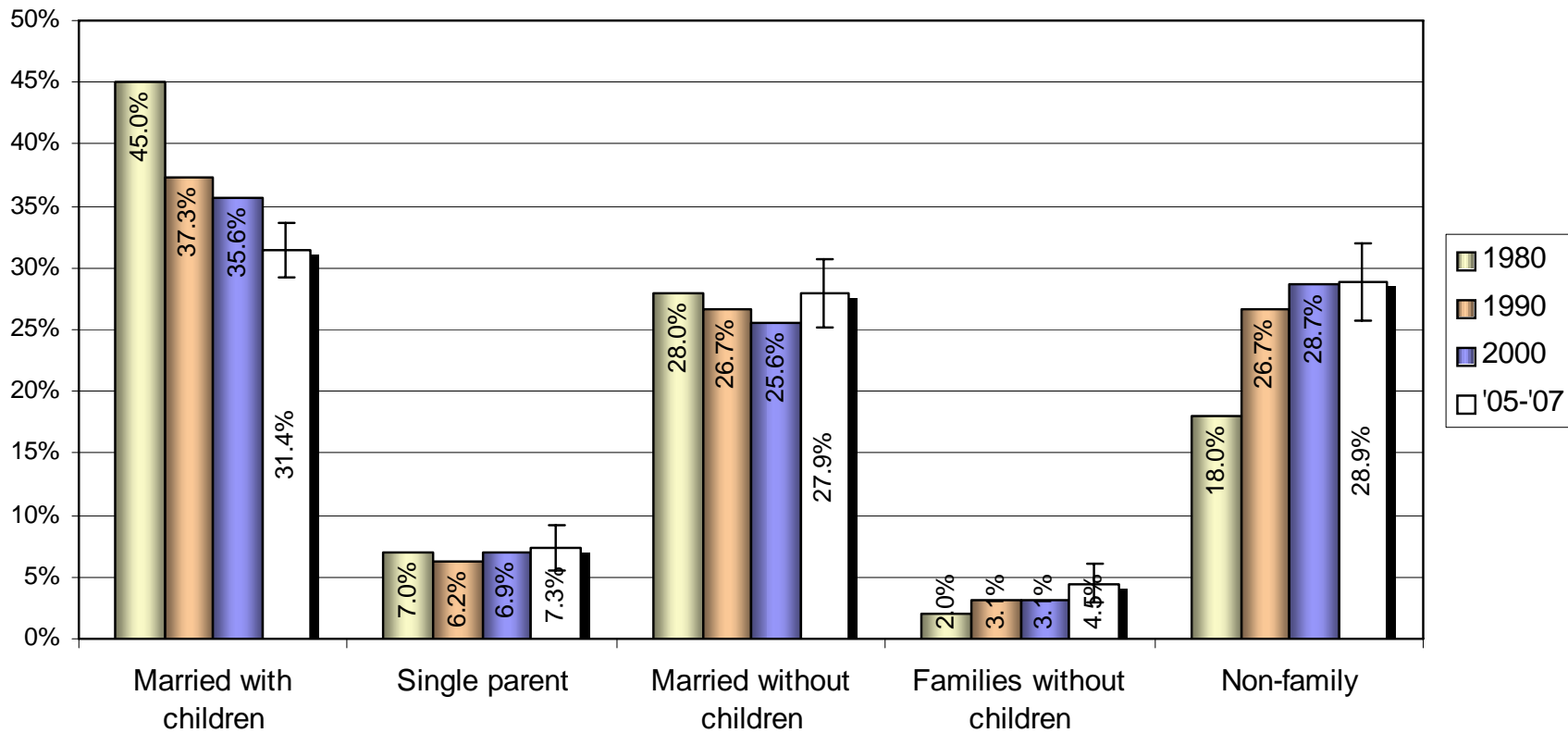
Average household size



Household size

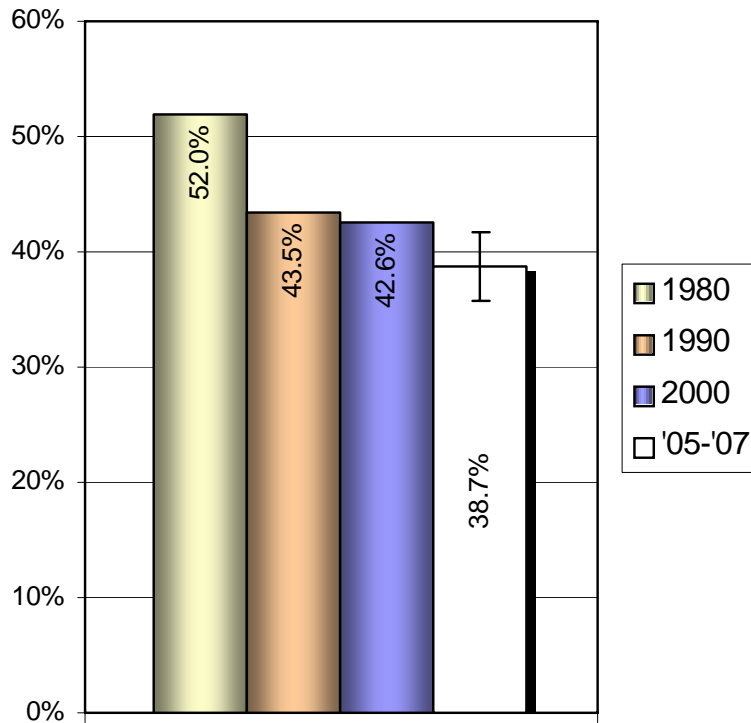


Household types

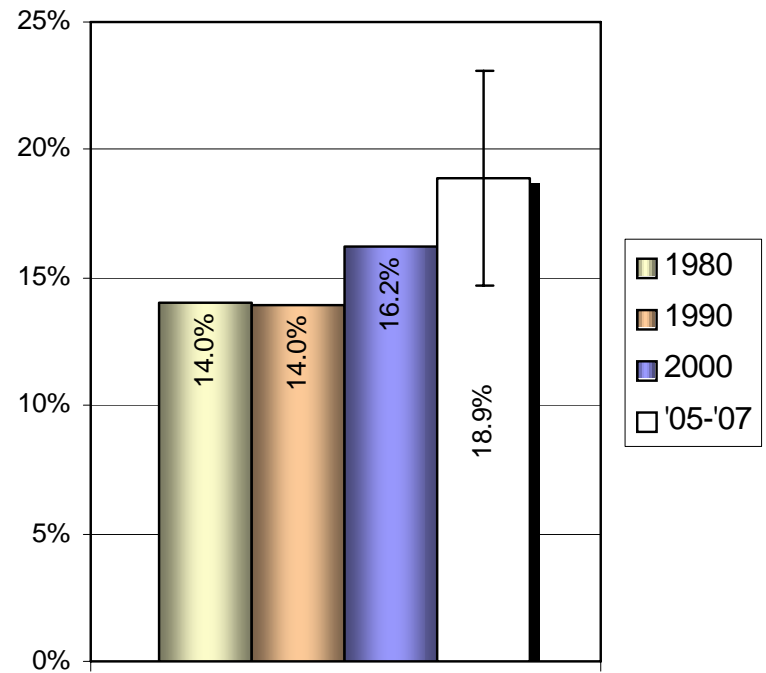


Household types (cont.)

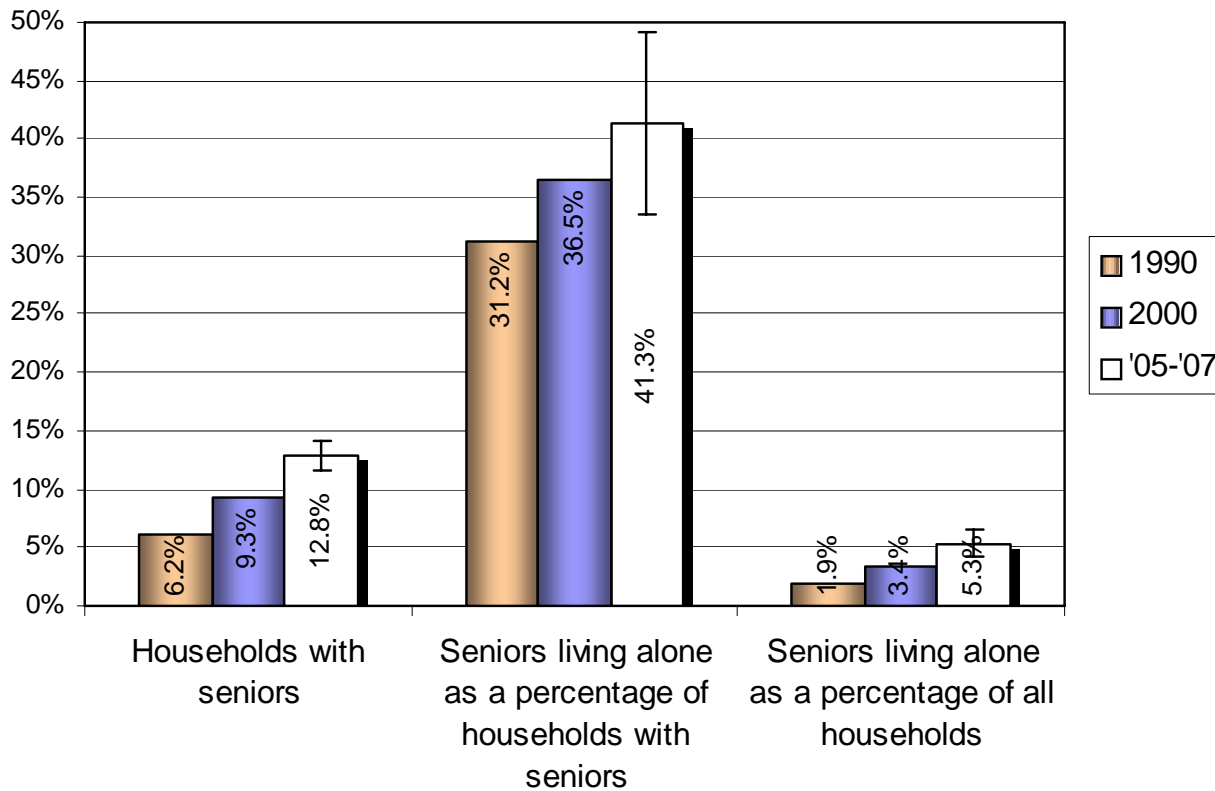
Households with own children



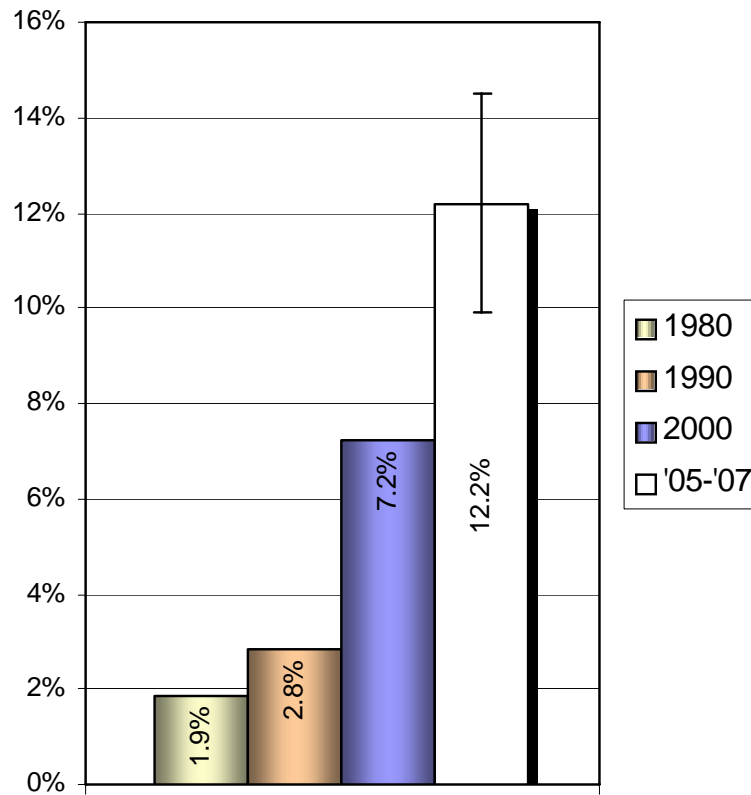
Single parents as a percentage of families with children



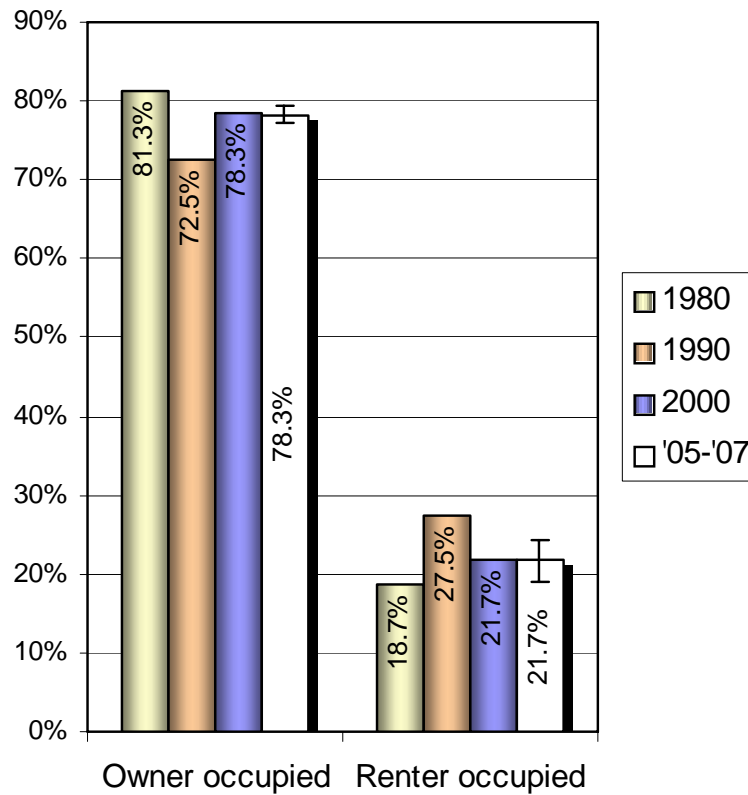
Households with seniors



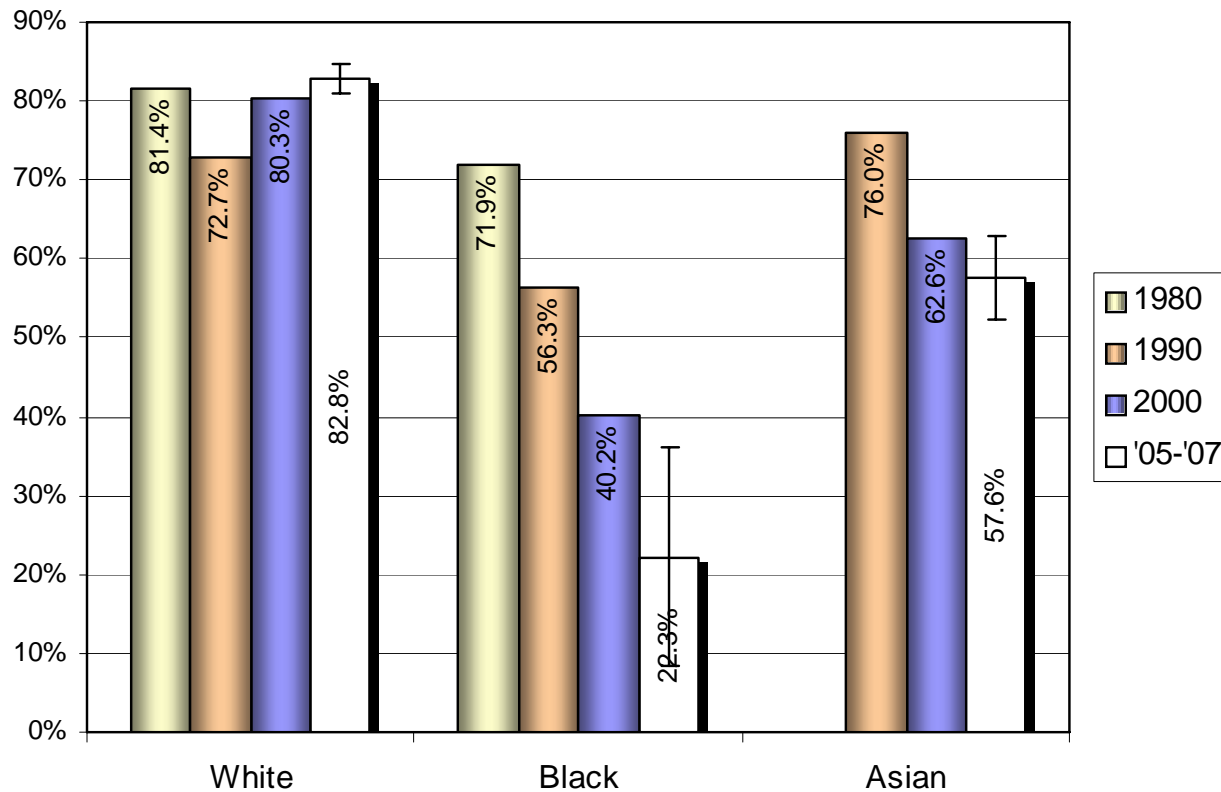
Householders of color



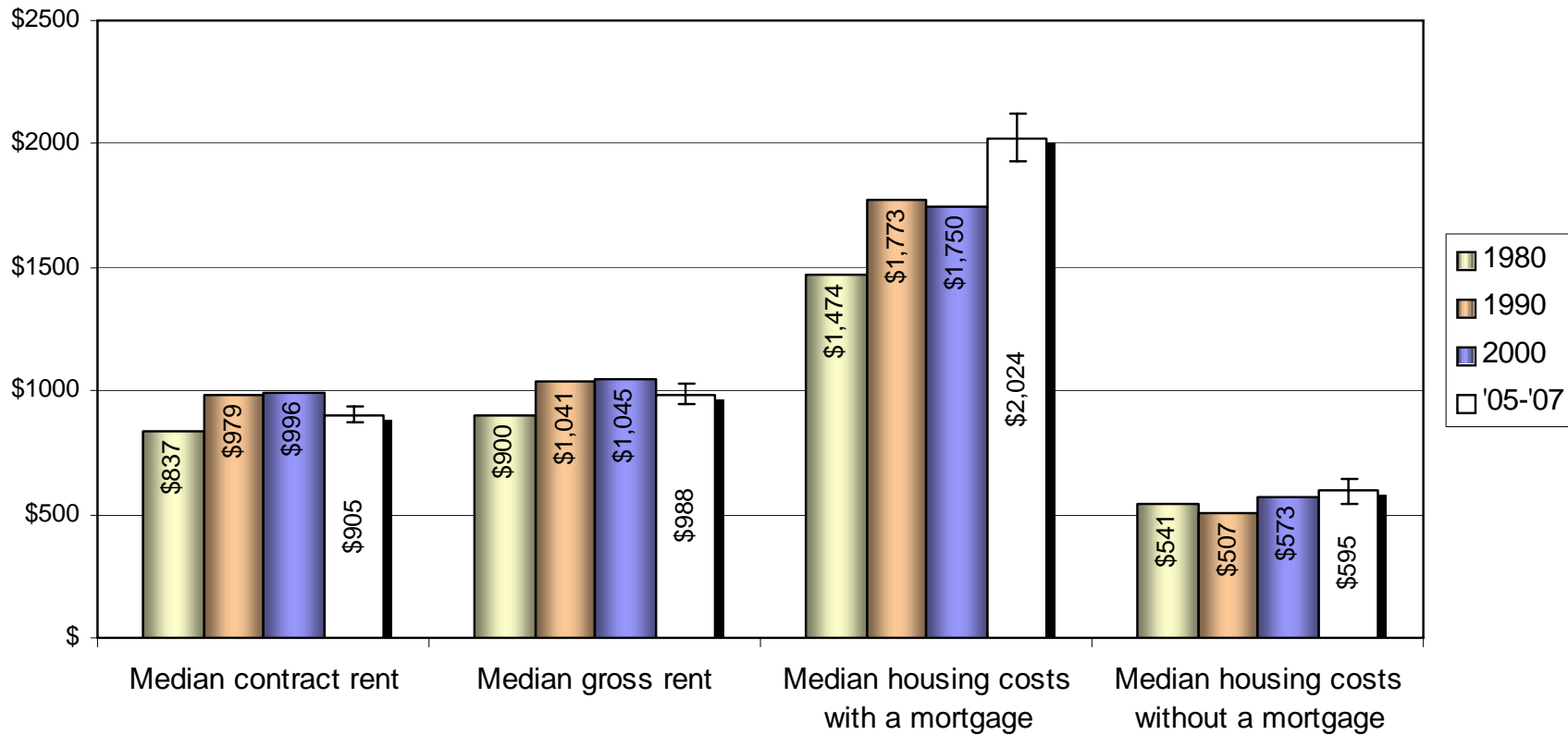
Occupancy in housing units



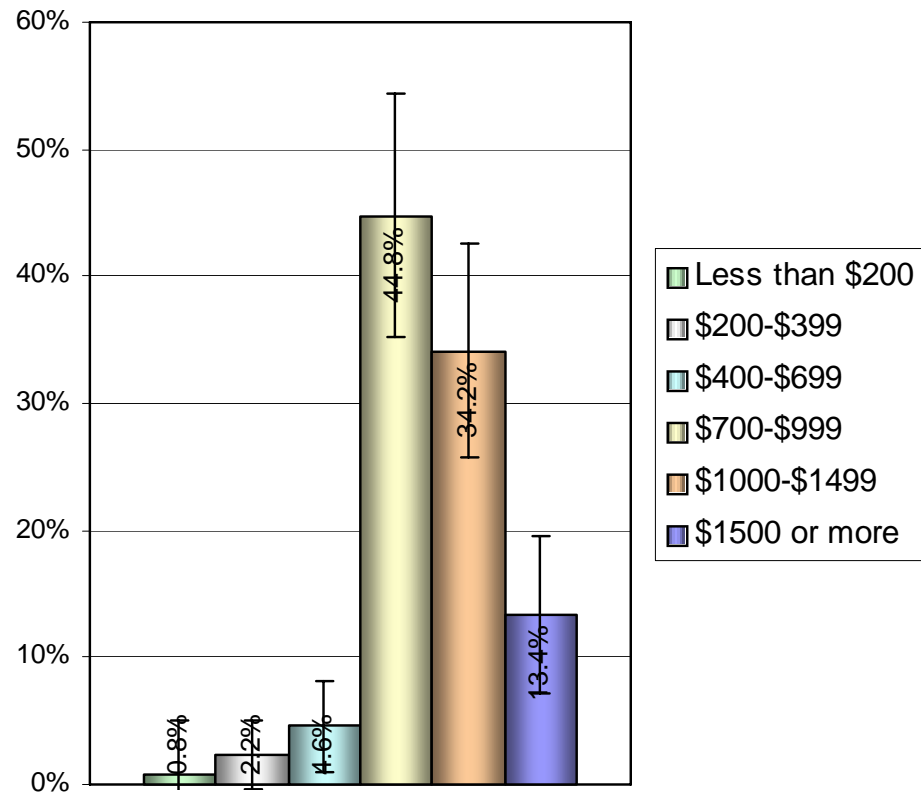
Owner occupancy rates by race of householder



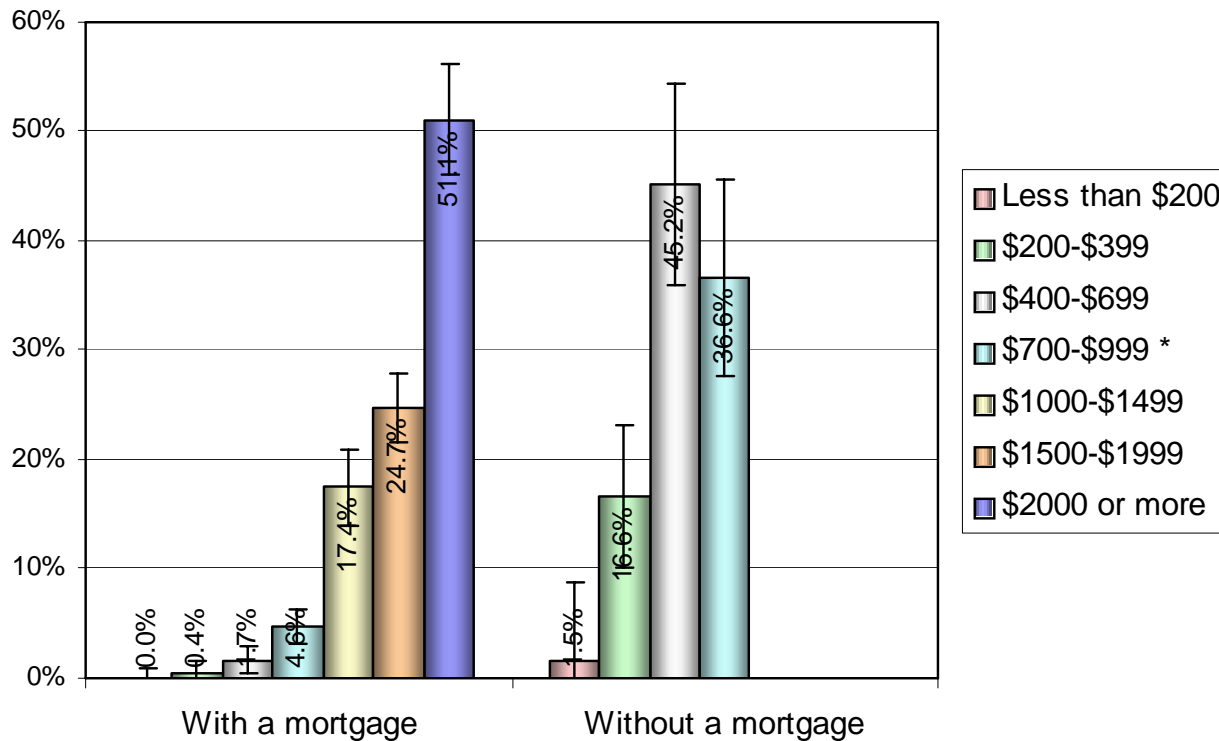
Median housing costs (in 2007 dollars)



Gross rent in 2005-2007 (in 2007 dollars)

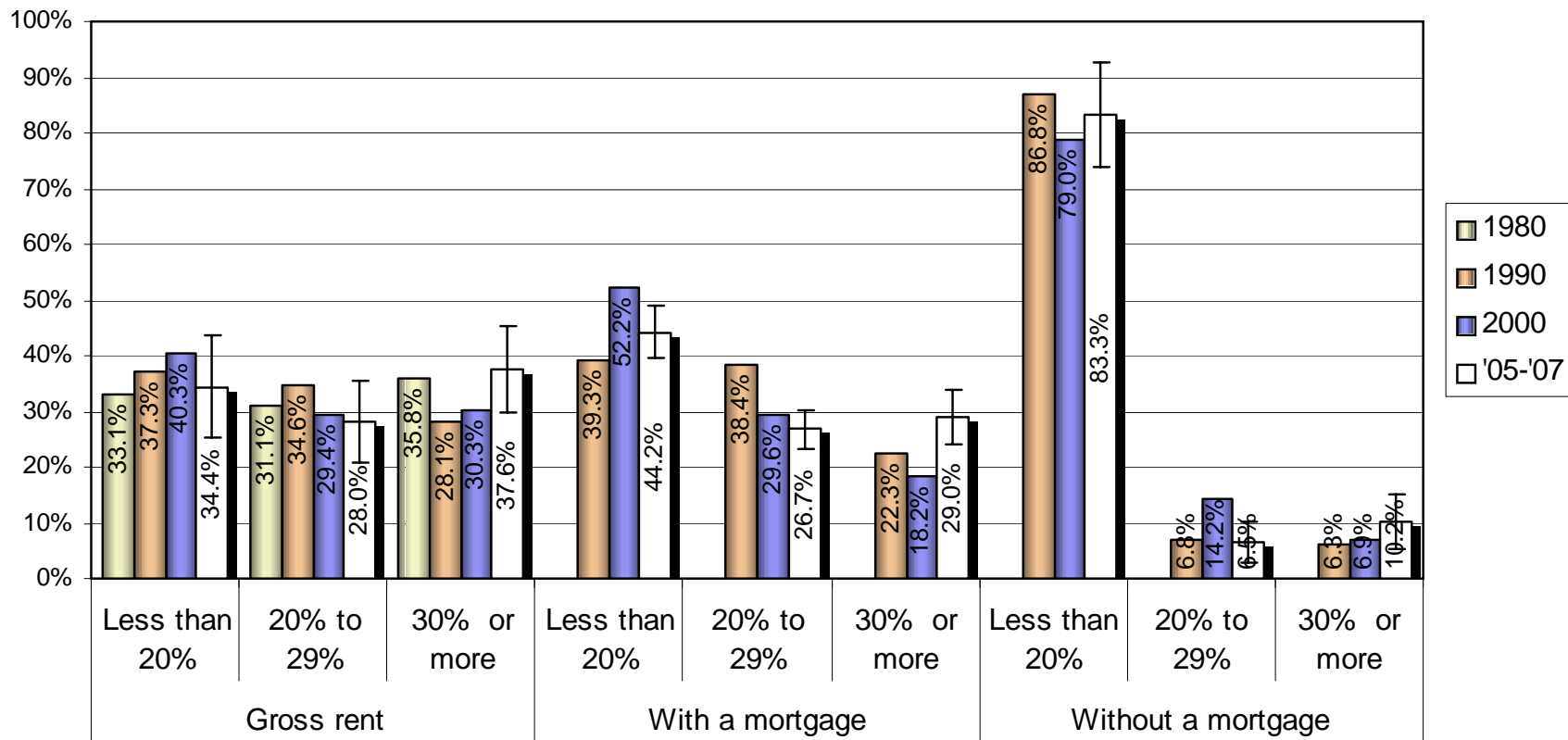


Homeowners' costs in 2005-2007 (in 2007 dollars)

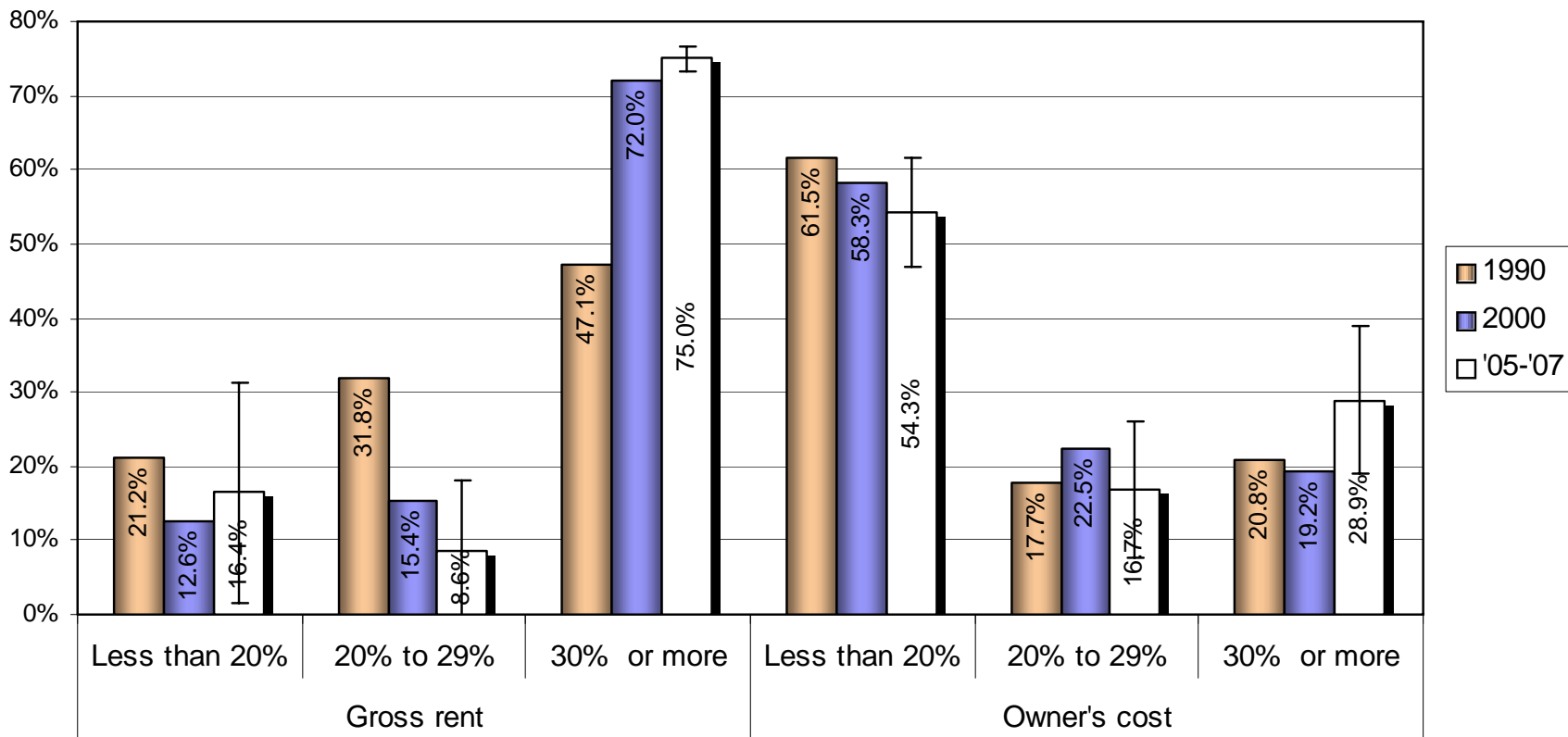


* \$700 or more for "Without a mortgage"

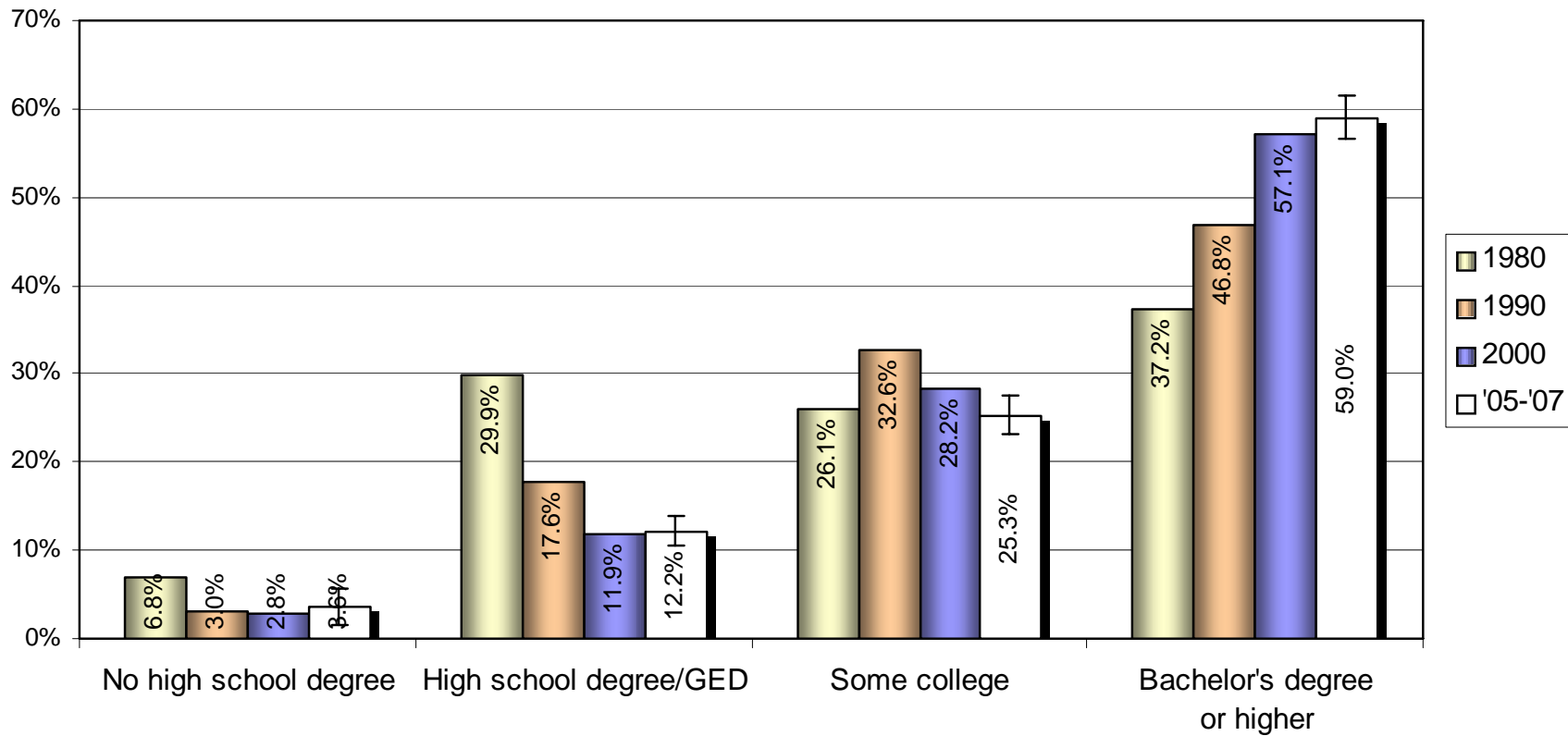
Housing costs as percentage of household income



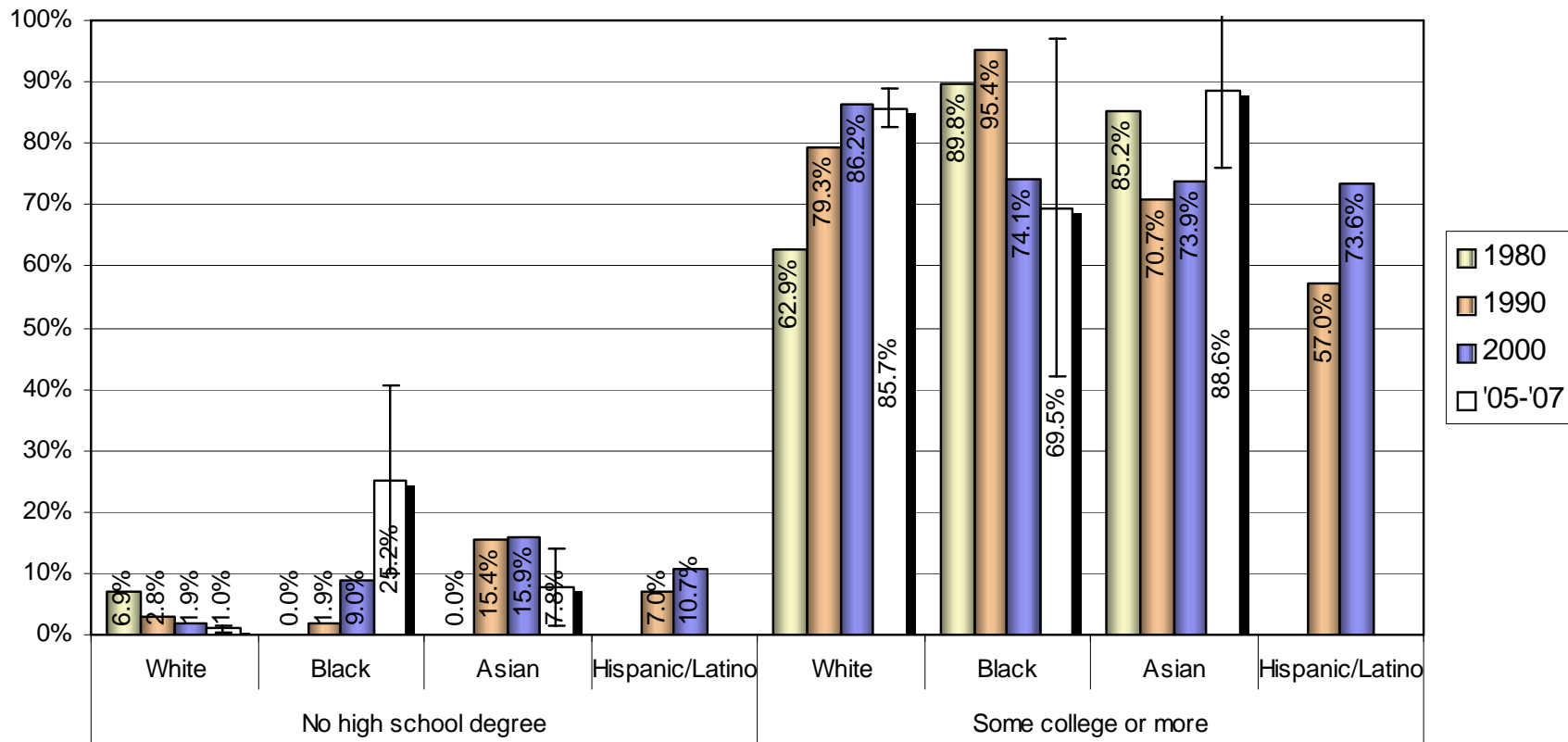
Housing costs as percentage of household income for Seniors



Educational attainment

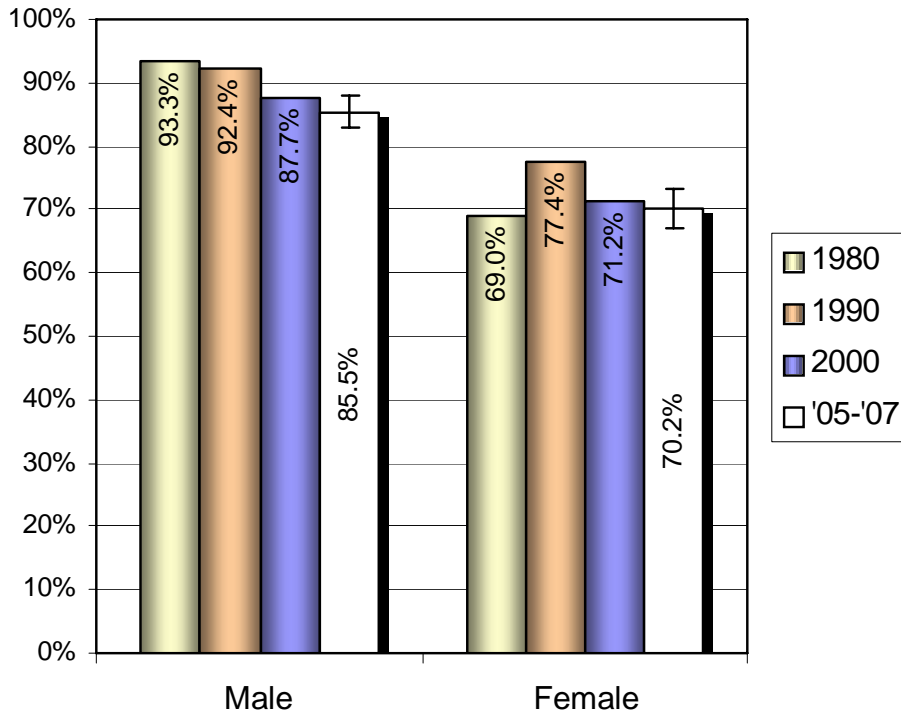


Educational attainment by Race/Ethnicity

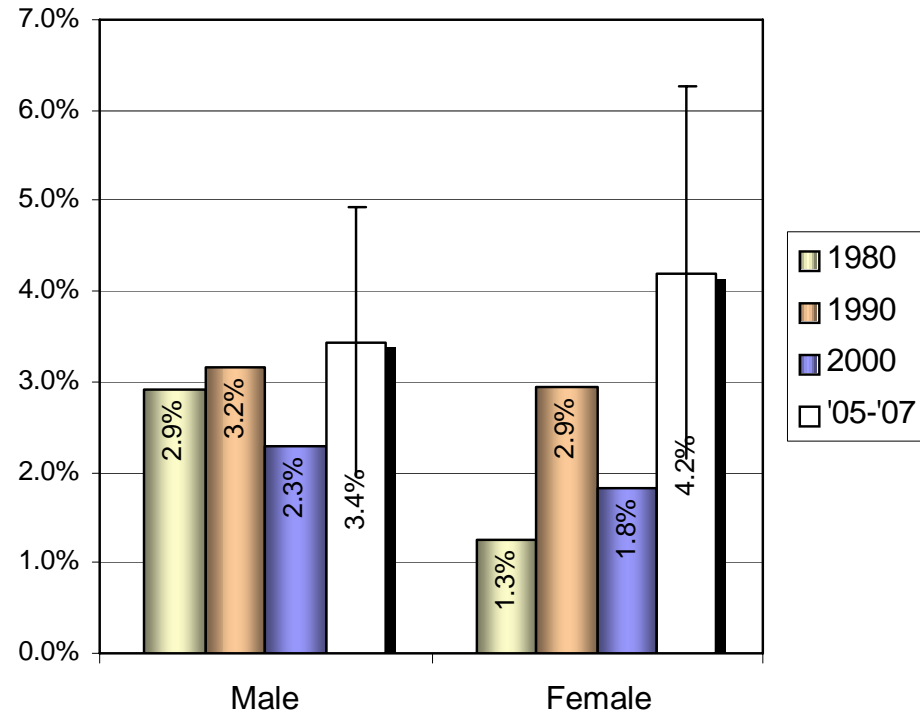


Labor force participation and unemployment by gender

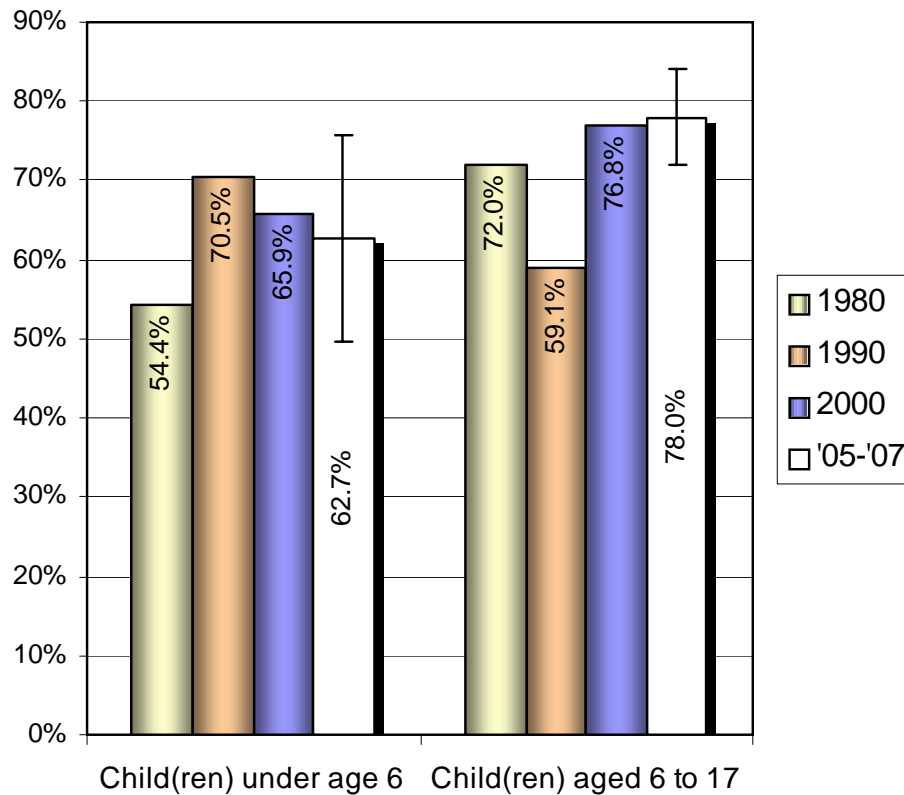
Labor force participation



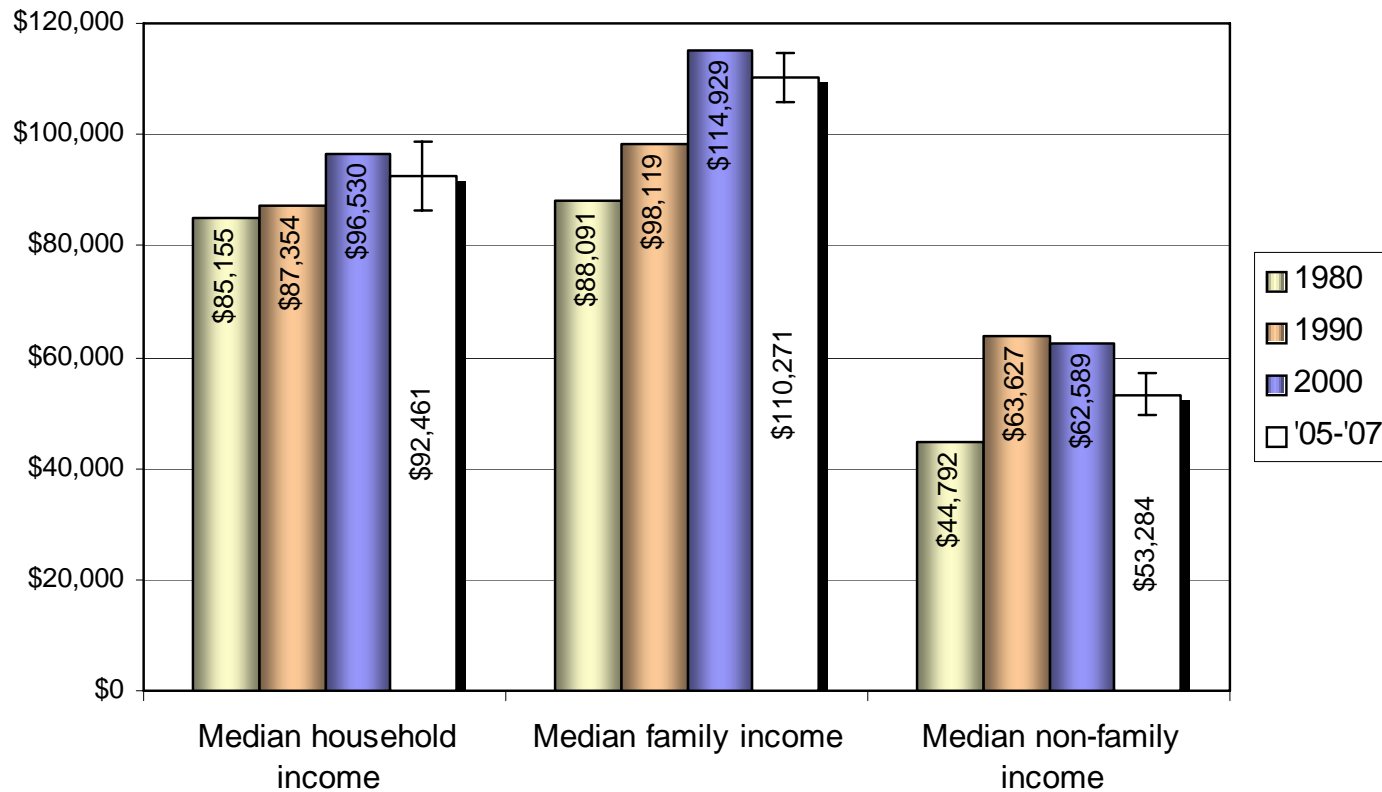
Unemployment



Labor force participation of women with children

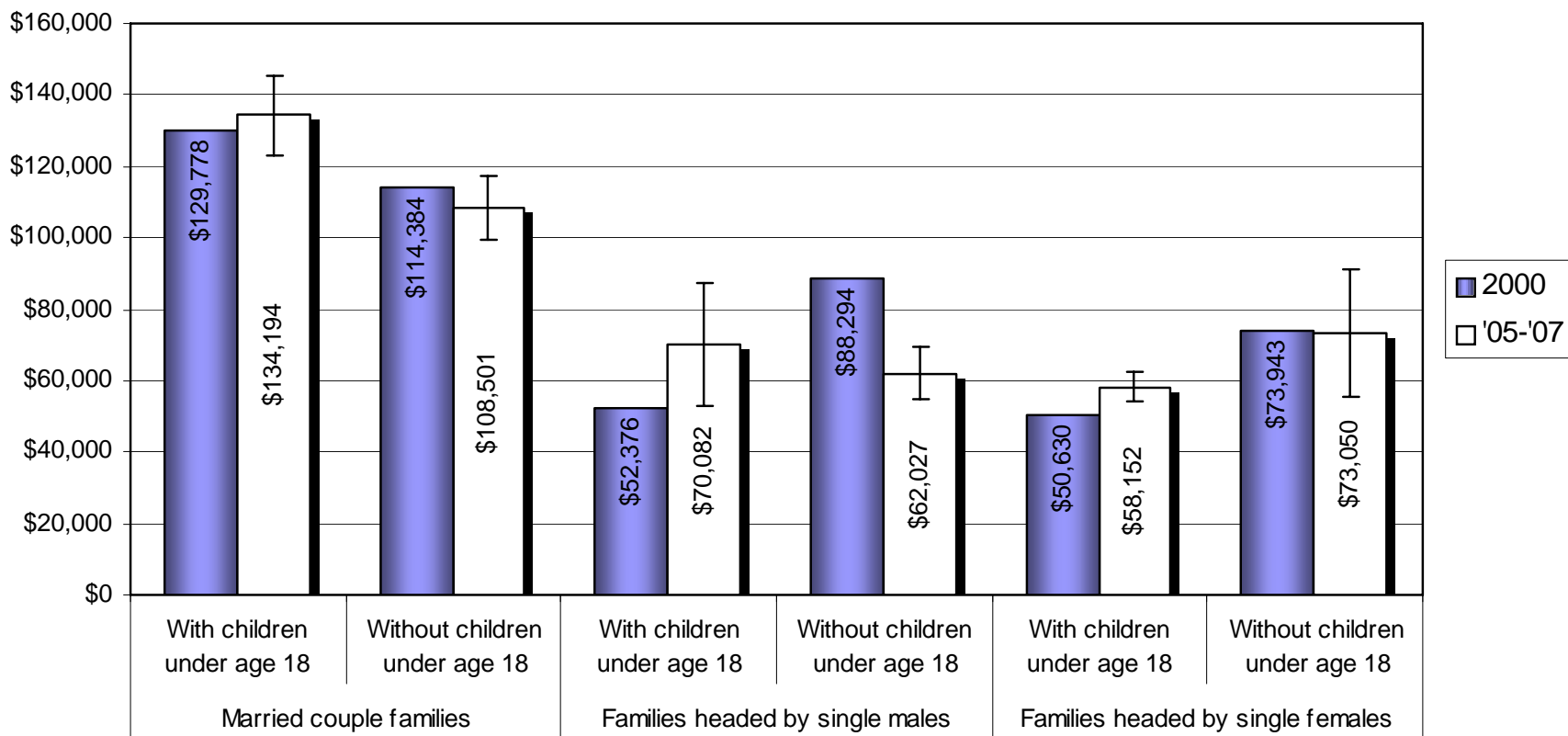


Median household, family, and non-family income (in 2007 dollars)

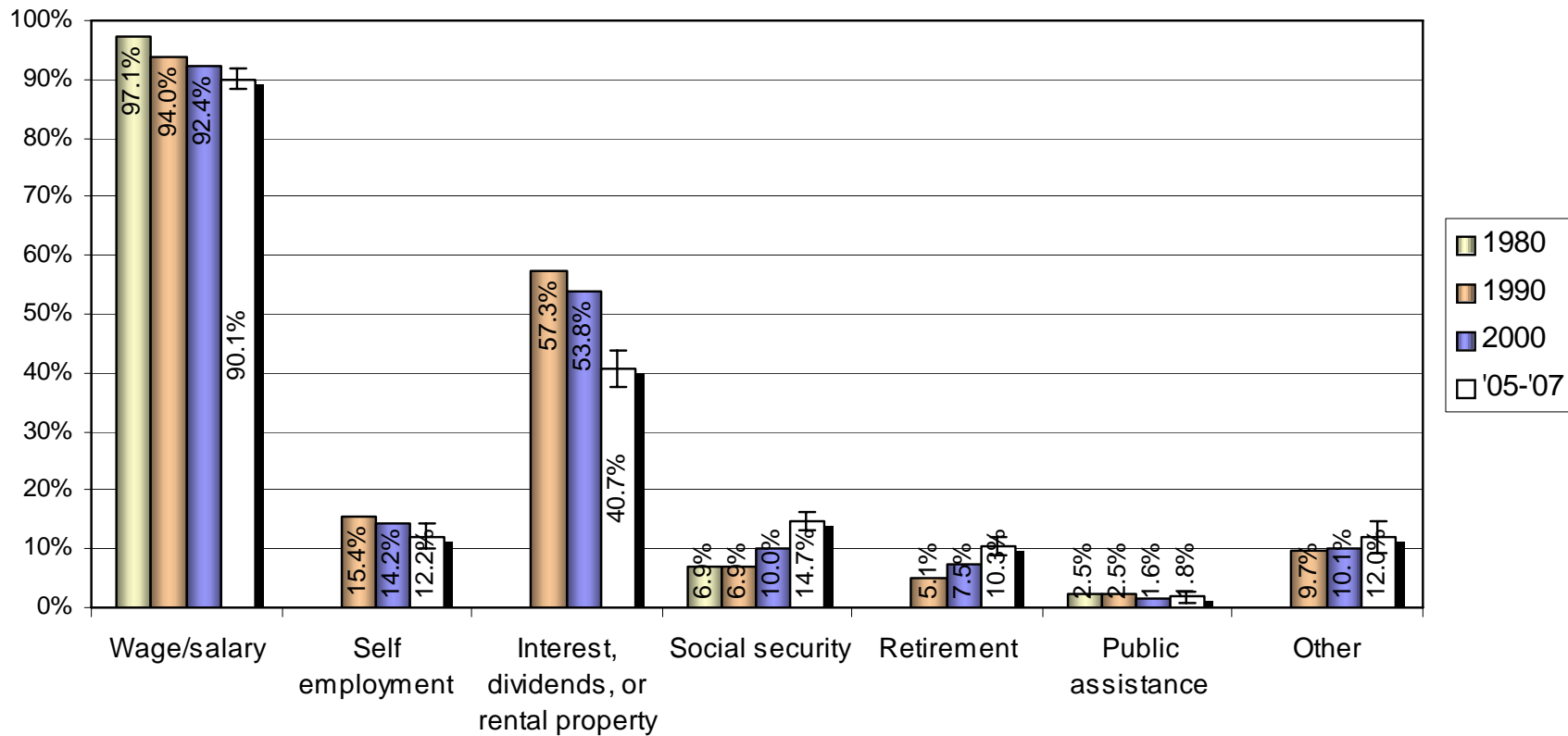


Median family income by family type

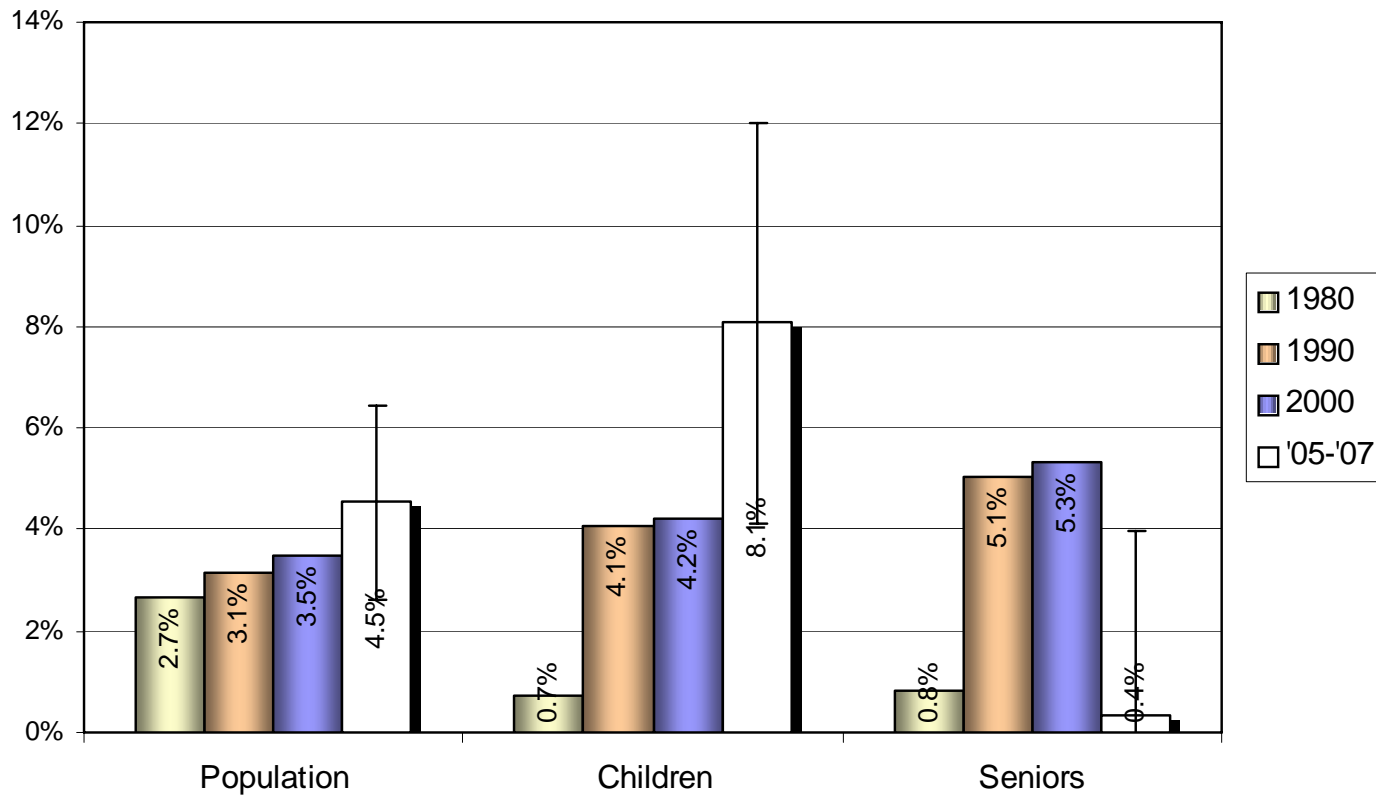
(in 2007 dollars)



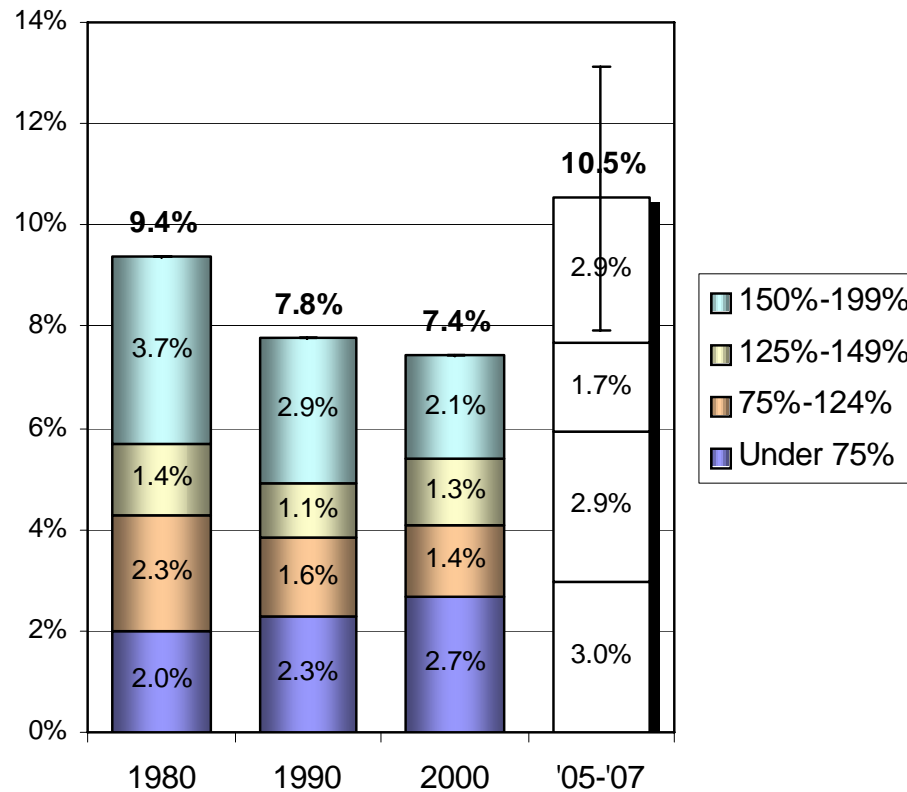
Sources of household income



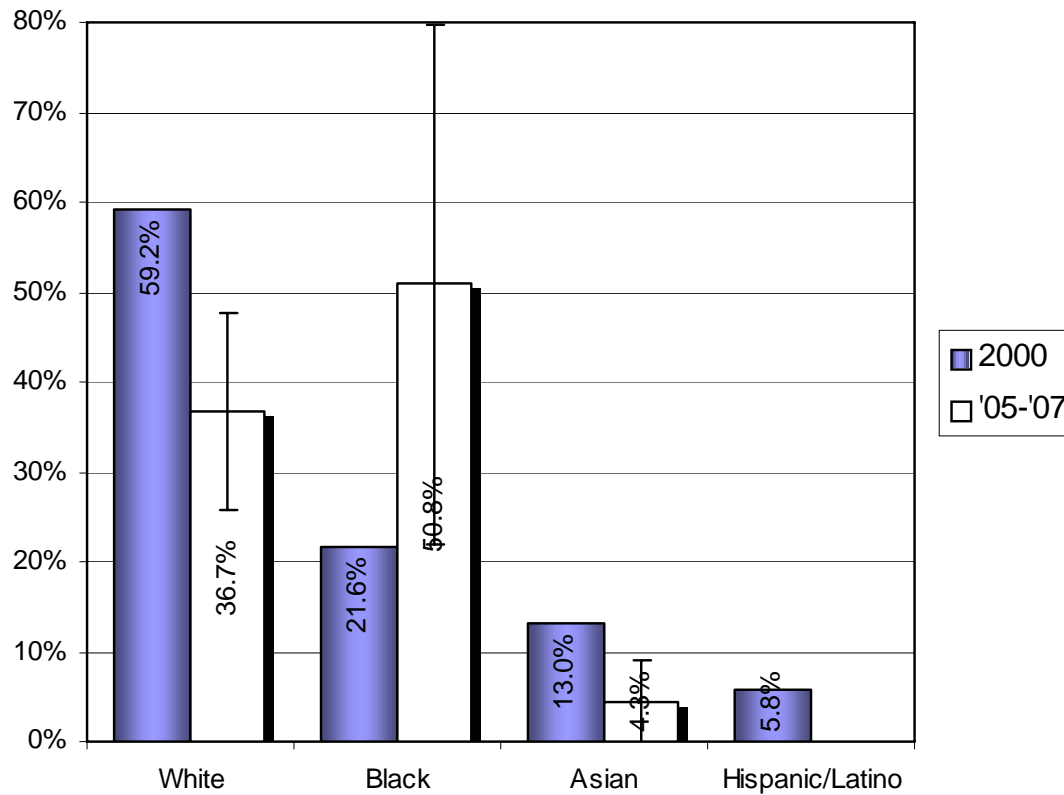
Population, children, and seniors in poverty



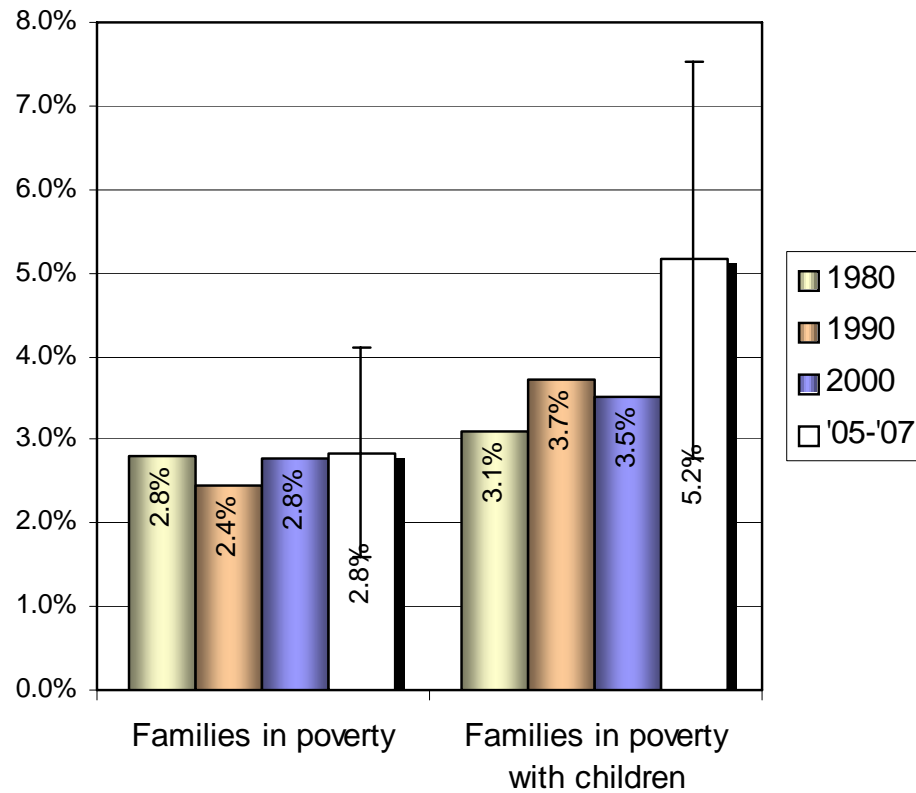
Population below 200% of poverty



Race/Ethnicity of population in poverty



Families in poverty





Things to “take away”

1. The total population and number of households and families continue to increase (although at slowing rates) and the population is becoming more diverse – substantial increases in the population of color and the foreign-born population.
2. The population is becoming older – steadily increasing portion of seniors and generally decreasing portion of children.
3. The portions of smaller households (1- and 2-person) are generally increasing – significant increases in non-family households and decreases in households with children.
4. Households with seniors and seniors living alone are becoming larger portions of all households.



Things to “take away” (cont.)

5. There is a significant difference in portions and trends of owner occupancy rates by racial group – may be affected by substantially increasing mortgage costs.
6. Increasing portions of all householders (both renters and owners) are “cost burdened” – especially seniors who rent.
7. Although generally decreasing portions of the overall population have not attained at least a high school degree, there is a significant increase in the Black population.
8. Males have a decreasing (although still high) rate of labor force participation while women with children have a generally increasing rate.



Things to “take away” (cont.)

9. Median incomes for households, families, and non-families increased from 1980 to 2000 – in 2005-2007 they all decreased from 2000 levels.
10. From 1980 to 2000, the portions of the total population, children, and seniors living in poverty steadily increased – in 2005-2007, the portion of children living in poverty increased further while the portion of seniors decreased dramatically.
11. After 20 years of steadily decreasing, the population living below 200% of poverty increased in 2005-2007 from 2000.
12. A vastly disproportionate portion of the black population lives in poverty.



Contact information

Daryl Coppoletti

Regional Planning Coordinator

Hennepin South Services Collaborative

952-922-5999 ex. 12

daryl.coppoletti@hsscmn.org

www.hsscmn.org