



# Demographic, Social, and Economic Trends of Bloomington Residents: 1980-2007

---

Presented by the  
Hennepin South Services Collaborative  
August 27, 2009



# Introduction

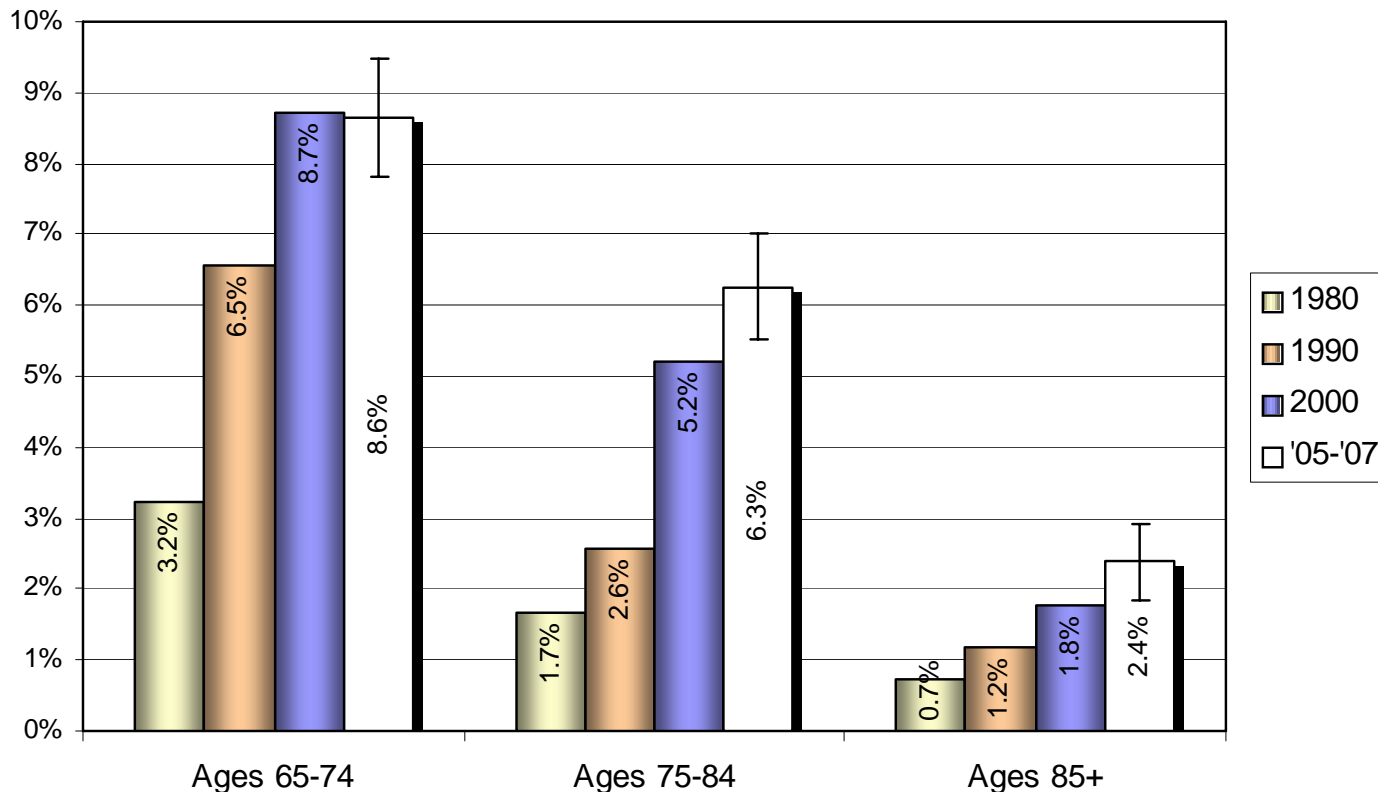
---

- Sources of data
  - 1980, 1990 & 2000 U.S. Census
  - 2005-2007 American Community Survey (ACS)

	<b>Census</b>	<b>ACS</b>
frequency	<ul style="list-style-type: none"><li>■ every 10 years</li></ul>	<ul style="list-style-type: none"><li>■ every year since 2000</li><li>■ 1-year datasets since 2005 and 3-year dataset of 2005-2007</li></ul>
coverage	<ul style="list-style-type: none"><li>■ short form – <u>every</u> household*</li><li>■ long form – 1 out of 6 households</li></ul>	<ul style="list-style-type: none"><li>■ 3 million households</li></ul>
data	<ul style="list-style-type: none"><li>■ actual counts</li></ul>	<ul style="list-style-type: none"><li>■ estimates with margins of error</li><li>■ 3-year datasets have averages</li></ul>

# Introduction (cont.)

Example of data points falling inside and outside the margin of error



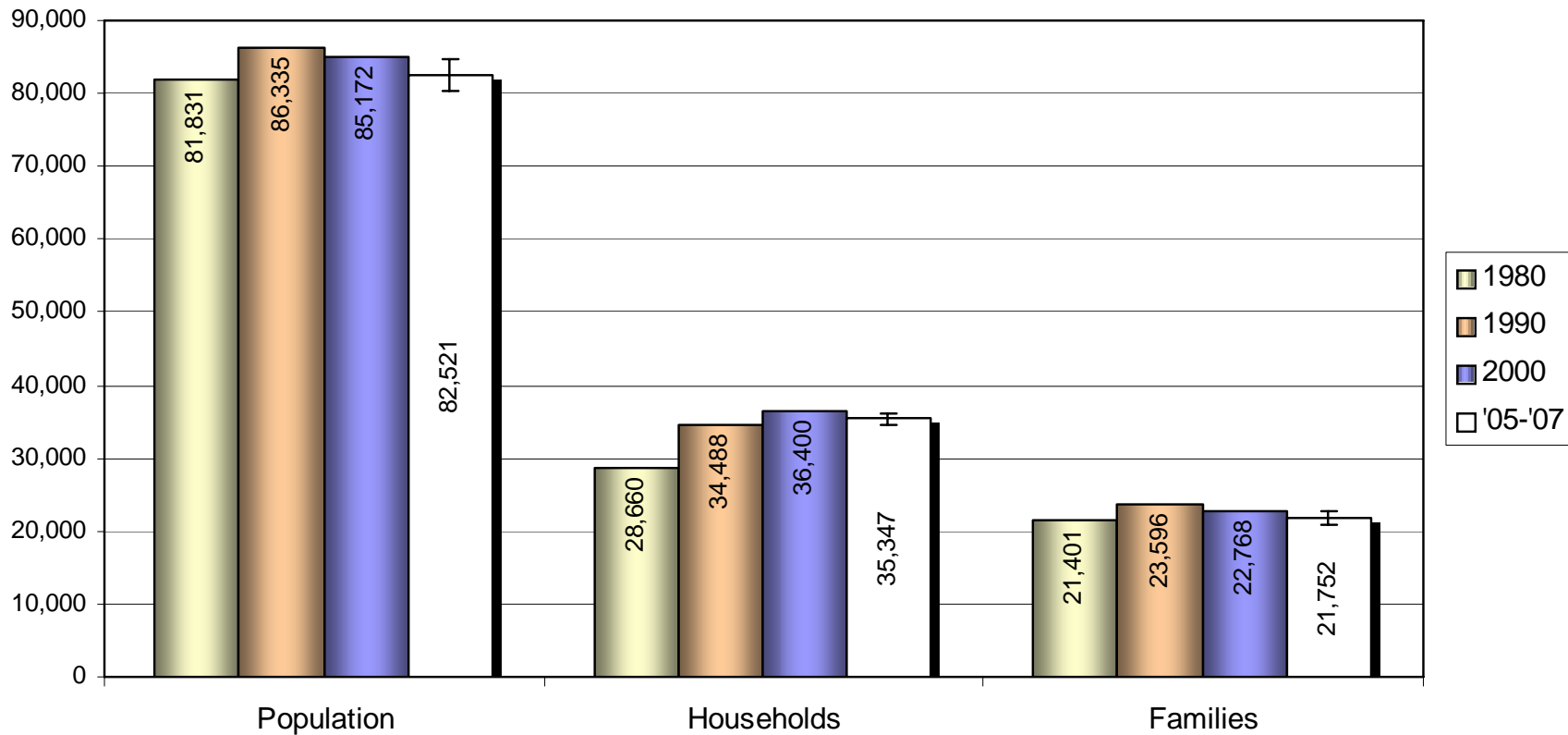


## Introduction (cont.)

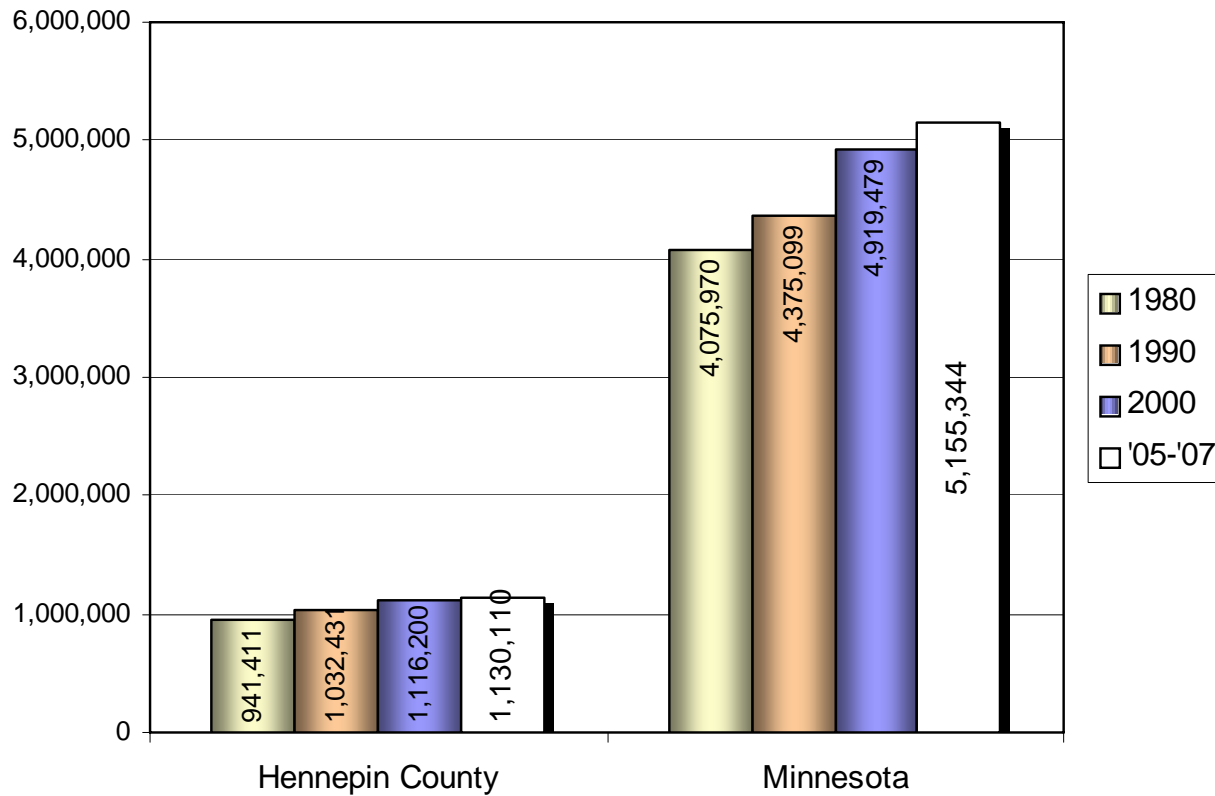
---

- Limitations of data
  - self-reported – unverified; dependent on memory
  - voluntary – non-reporting; undercounting
  - sample – smaller populations; influenced by “outliers”
- Intent/purpose of report: sourcebook of descriptive data trends; not “needs assessment”
- Definition section in report

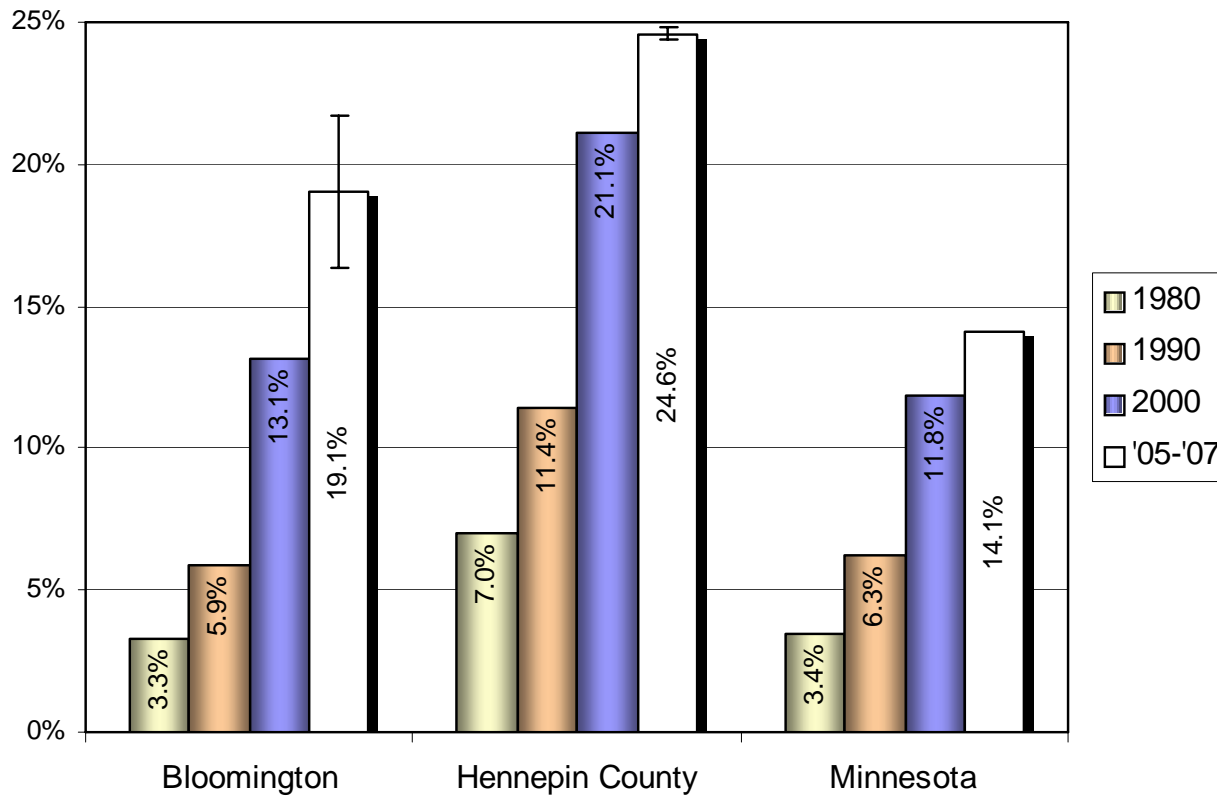
# Population, Households, and Families



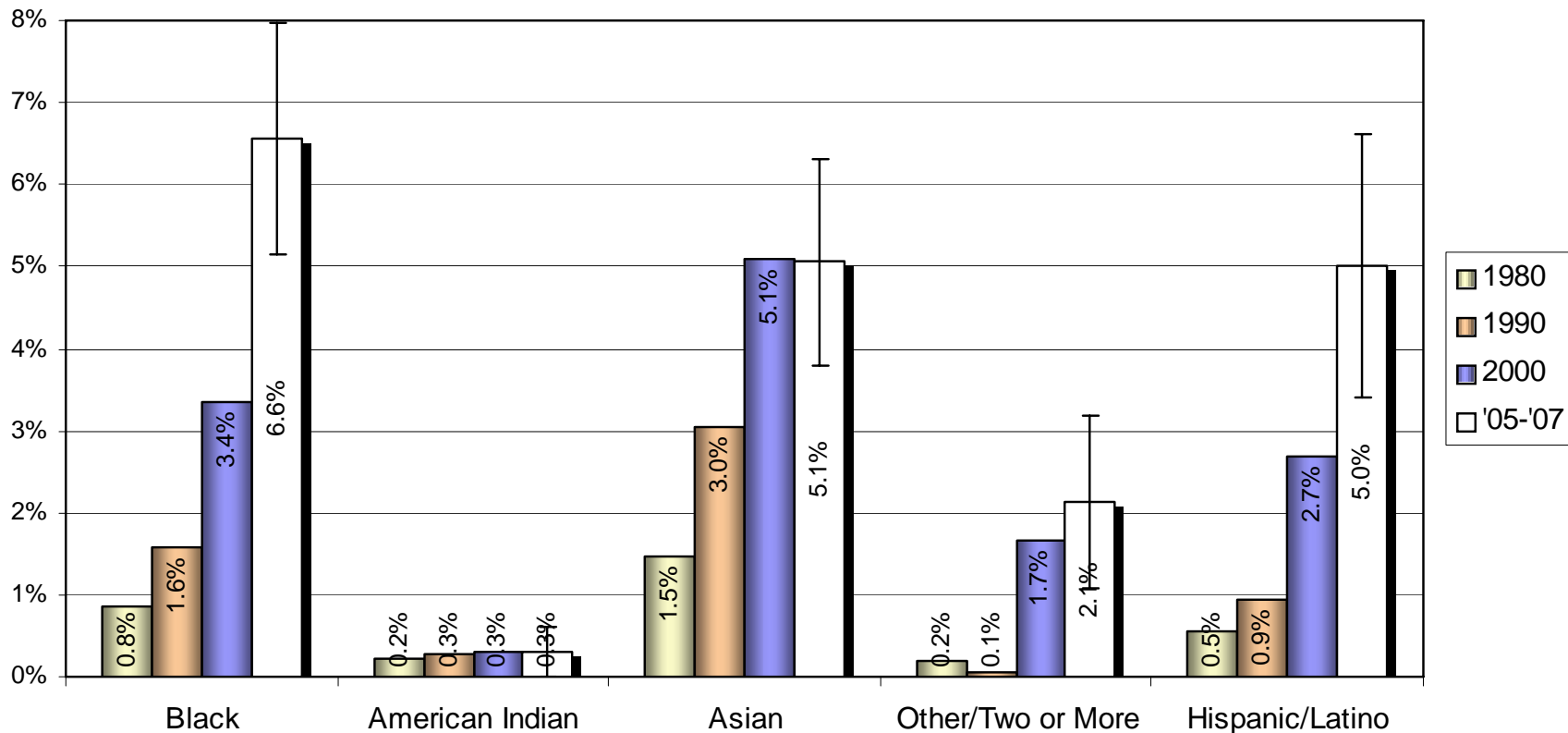
# Population comparisons



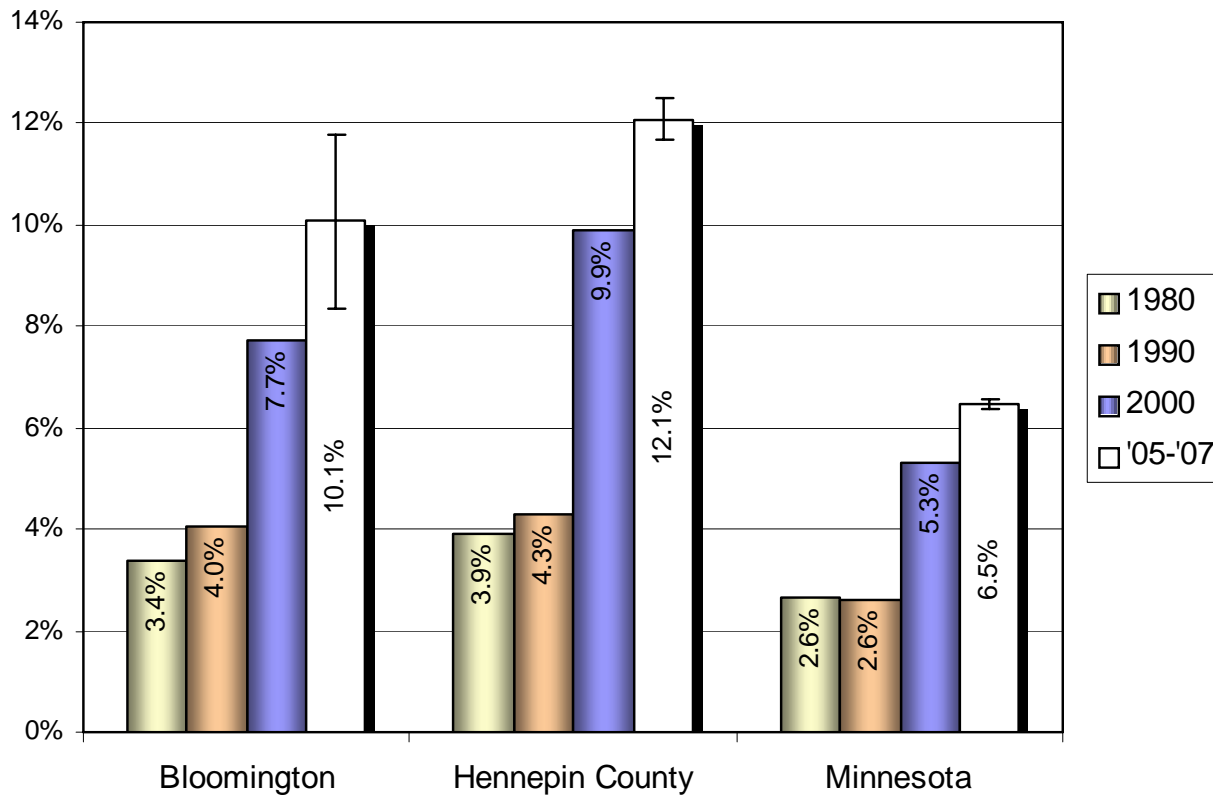
# People of color as a percentage of the population



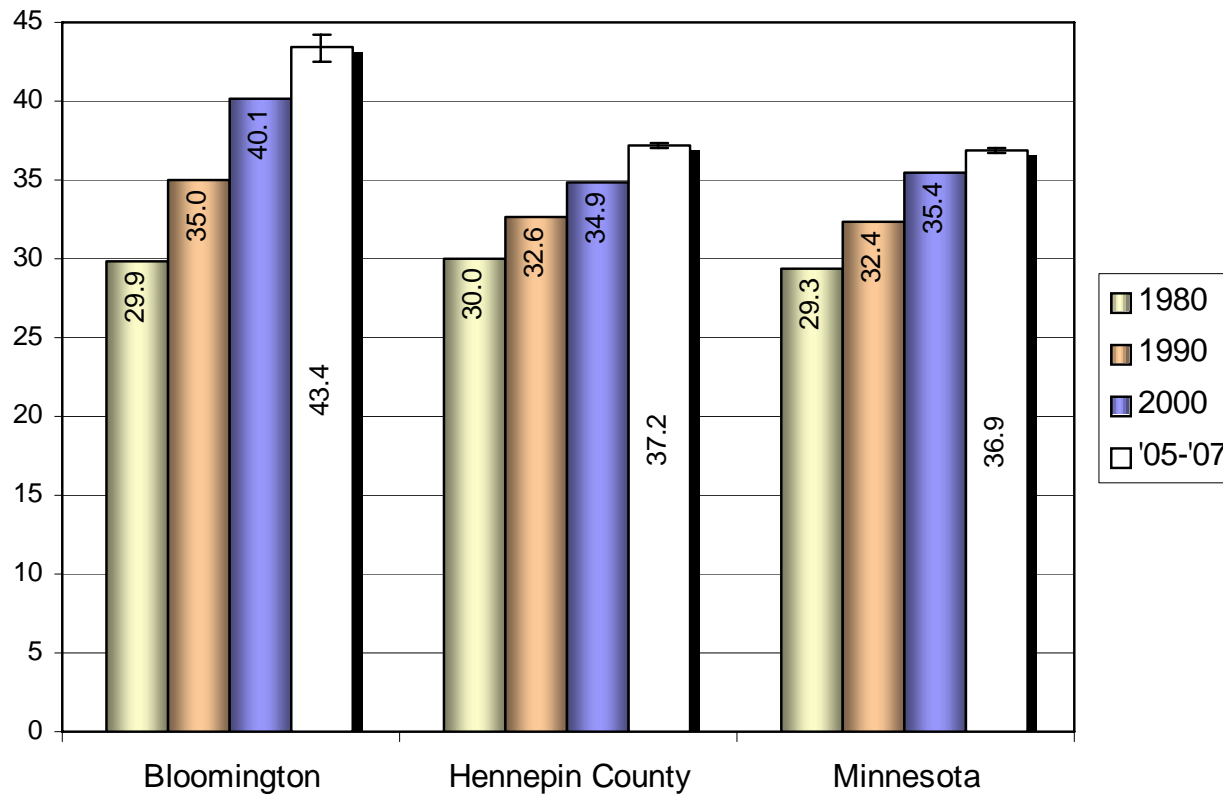
# People of color as a percentage of the population by race/ethnicity



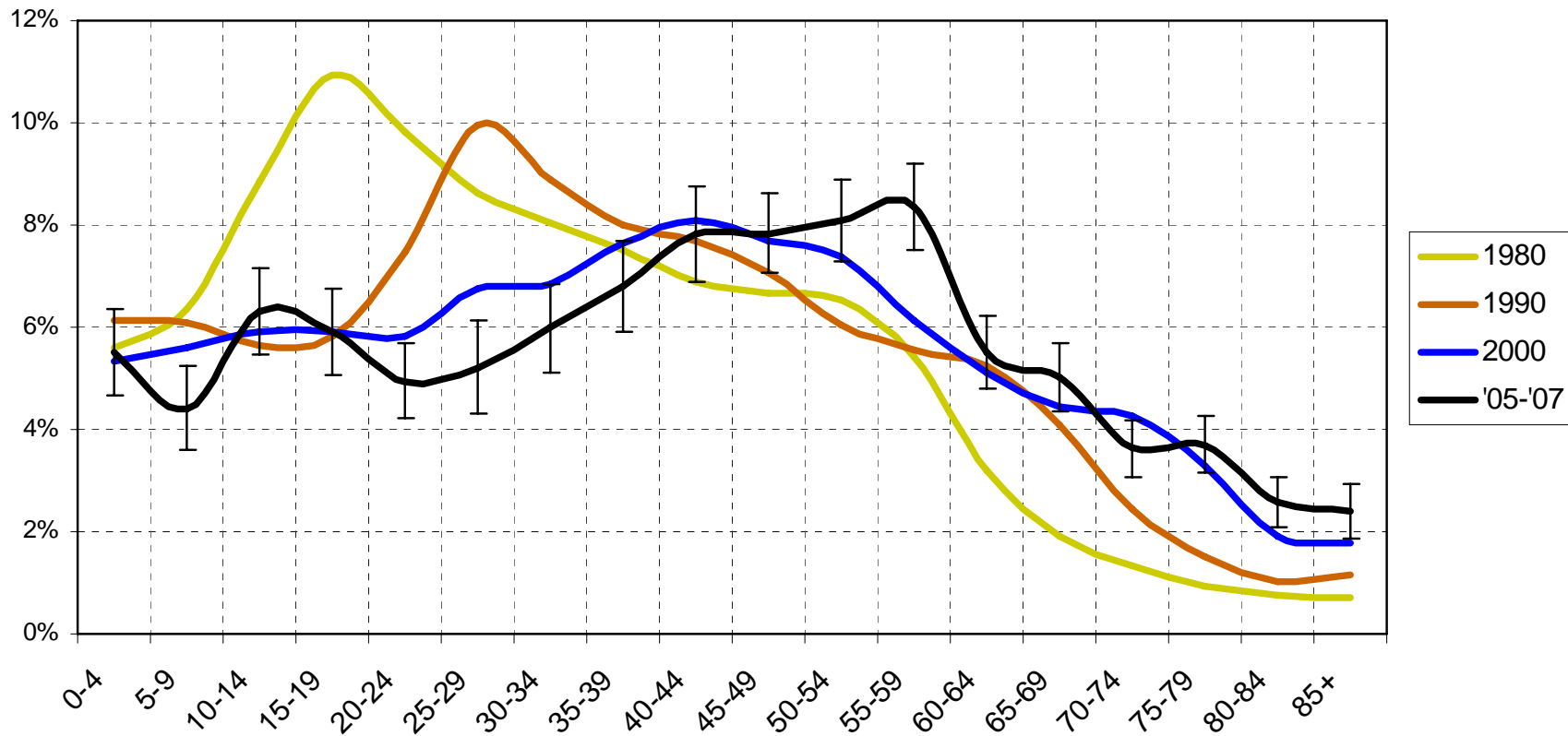
# Foreign-born population



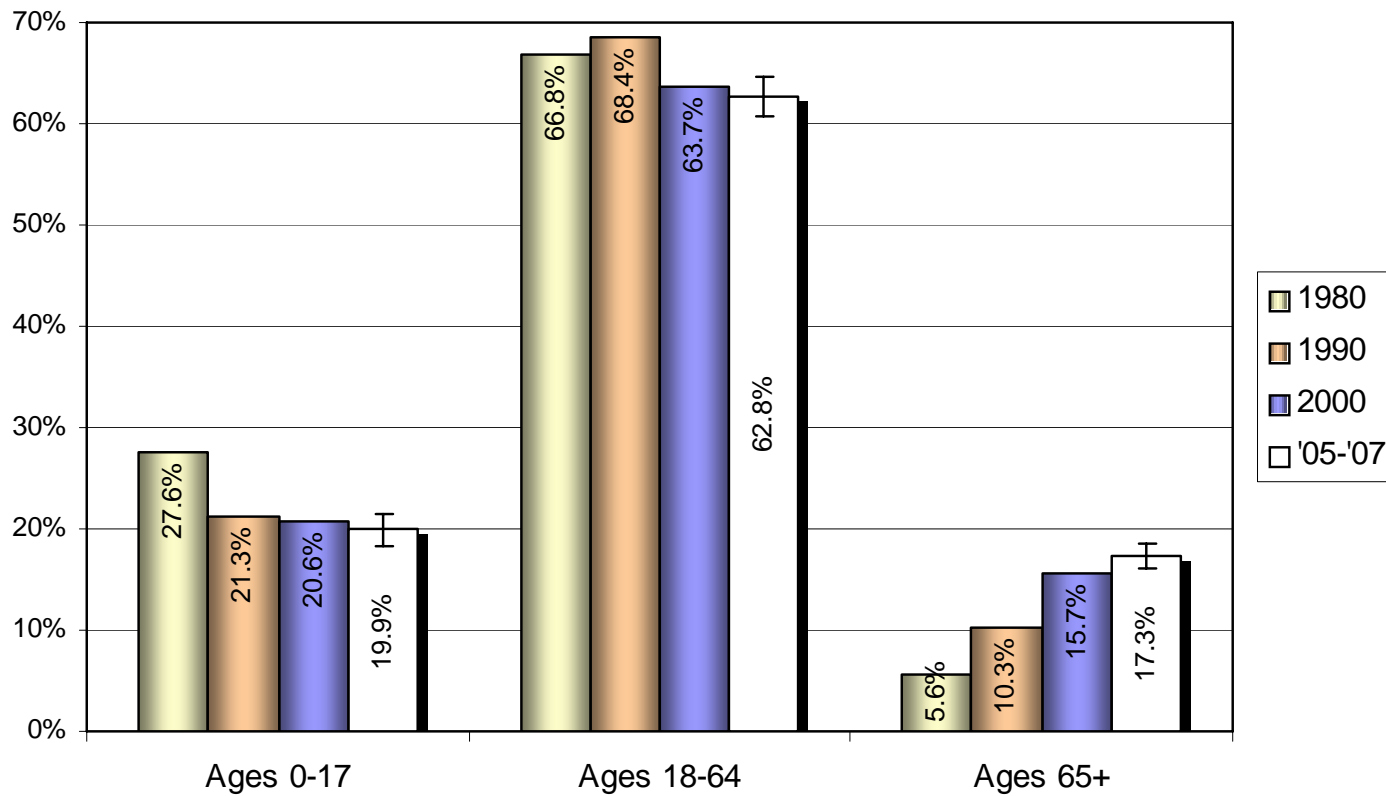
# Median Age



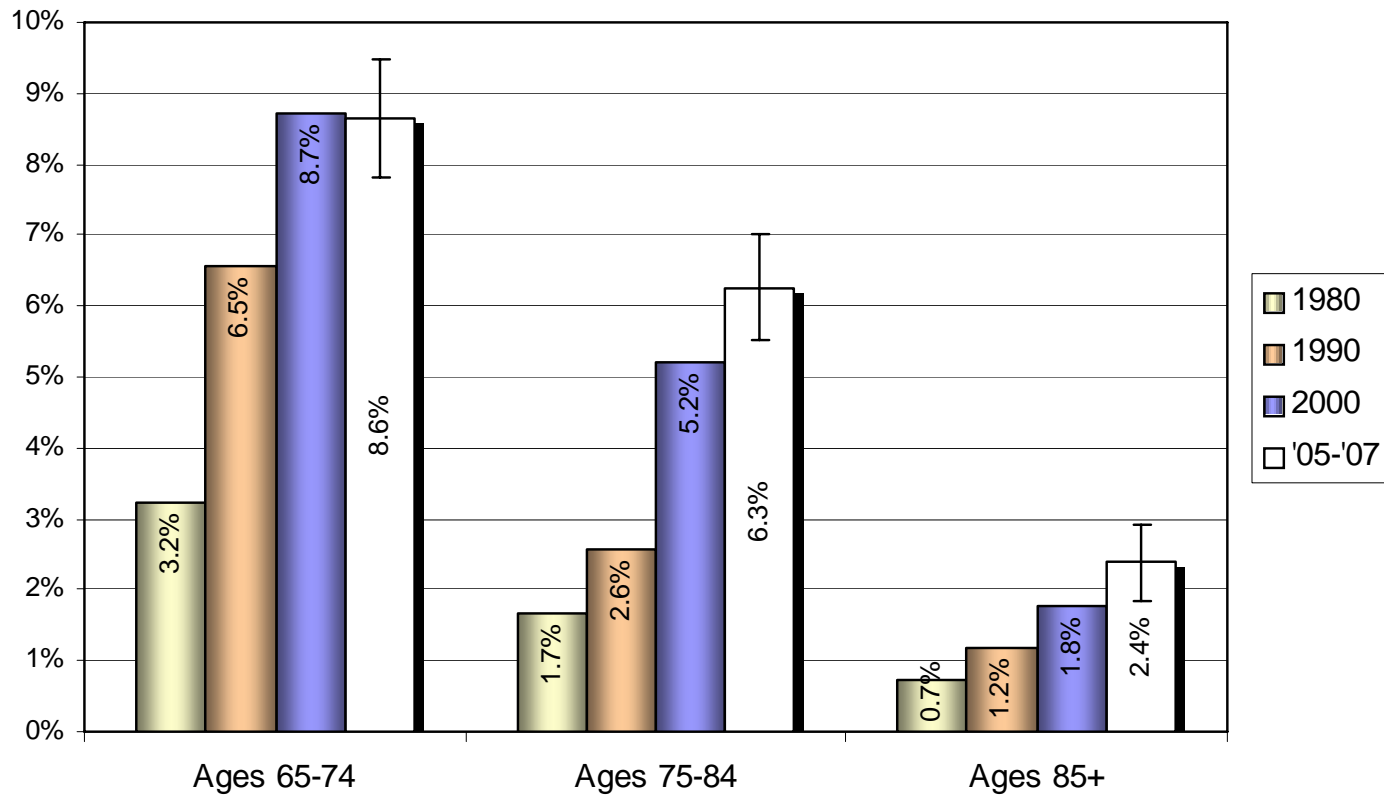
# Distribution of population by age



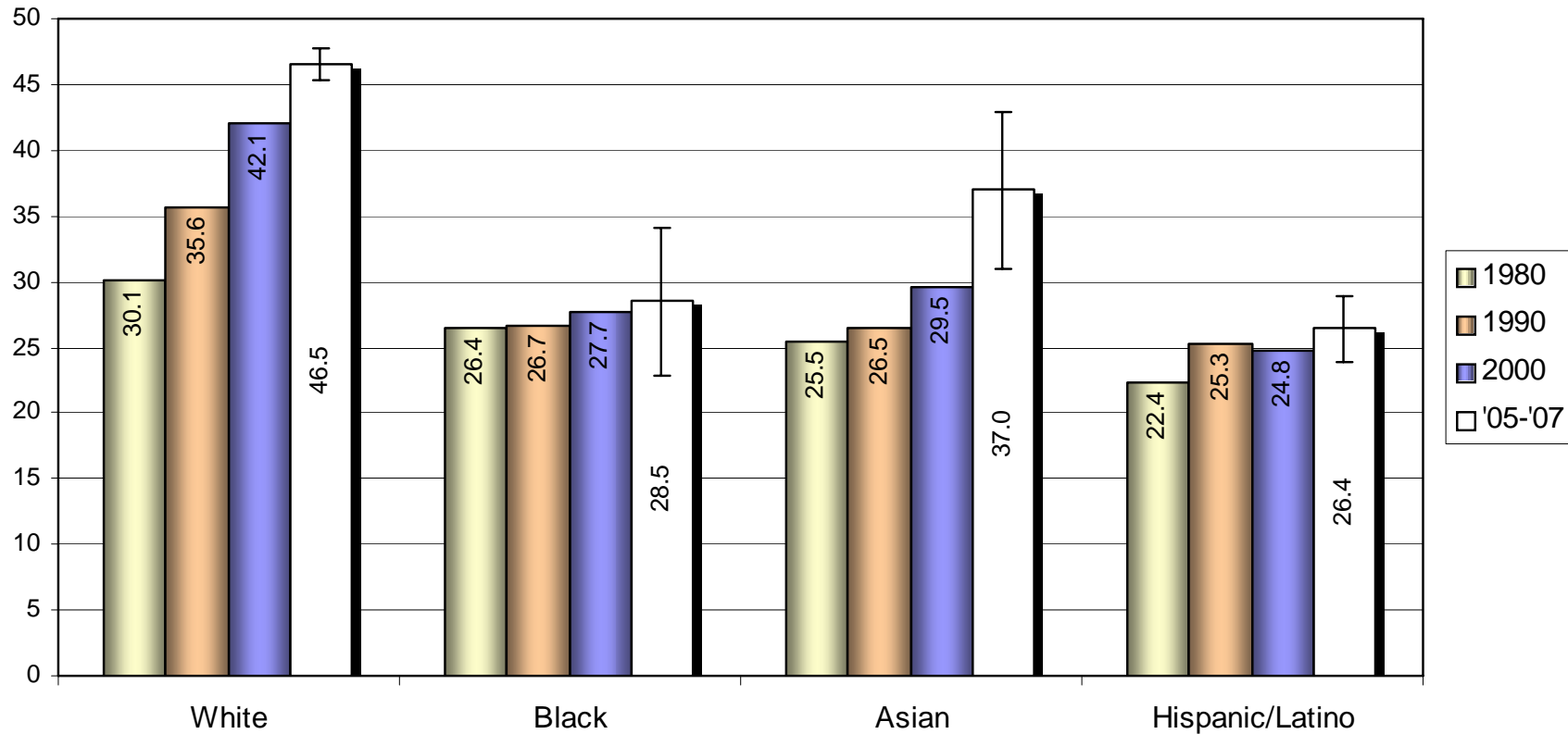
# Age composition



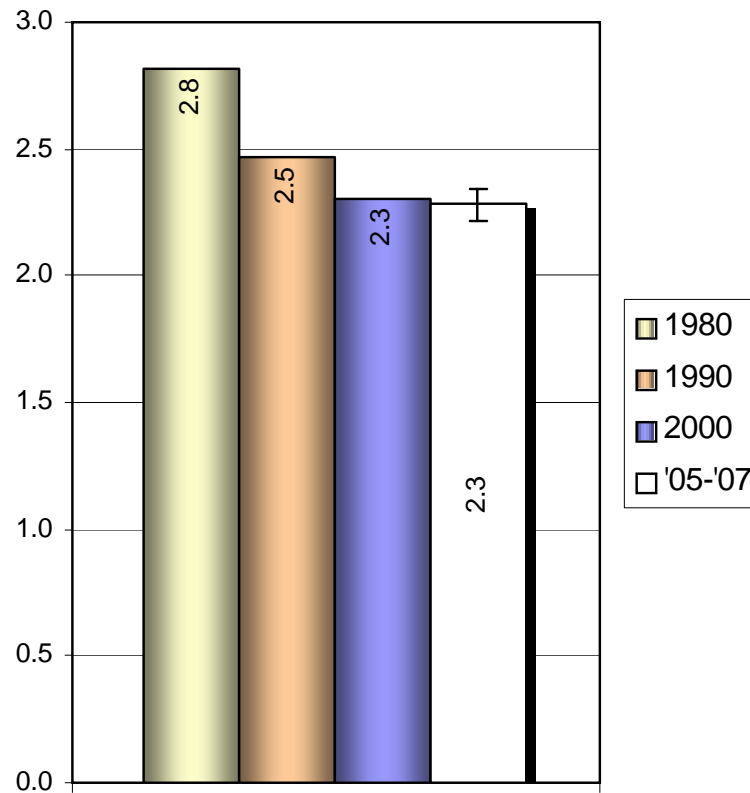
# The growing senior population



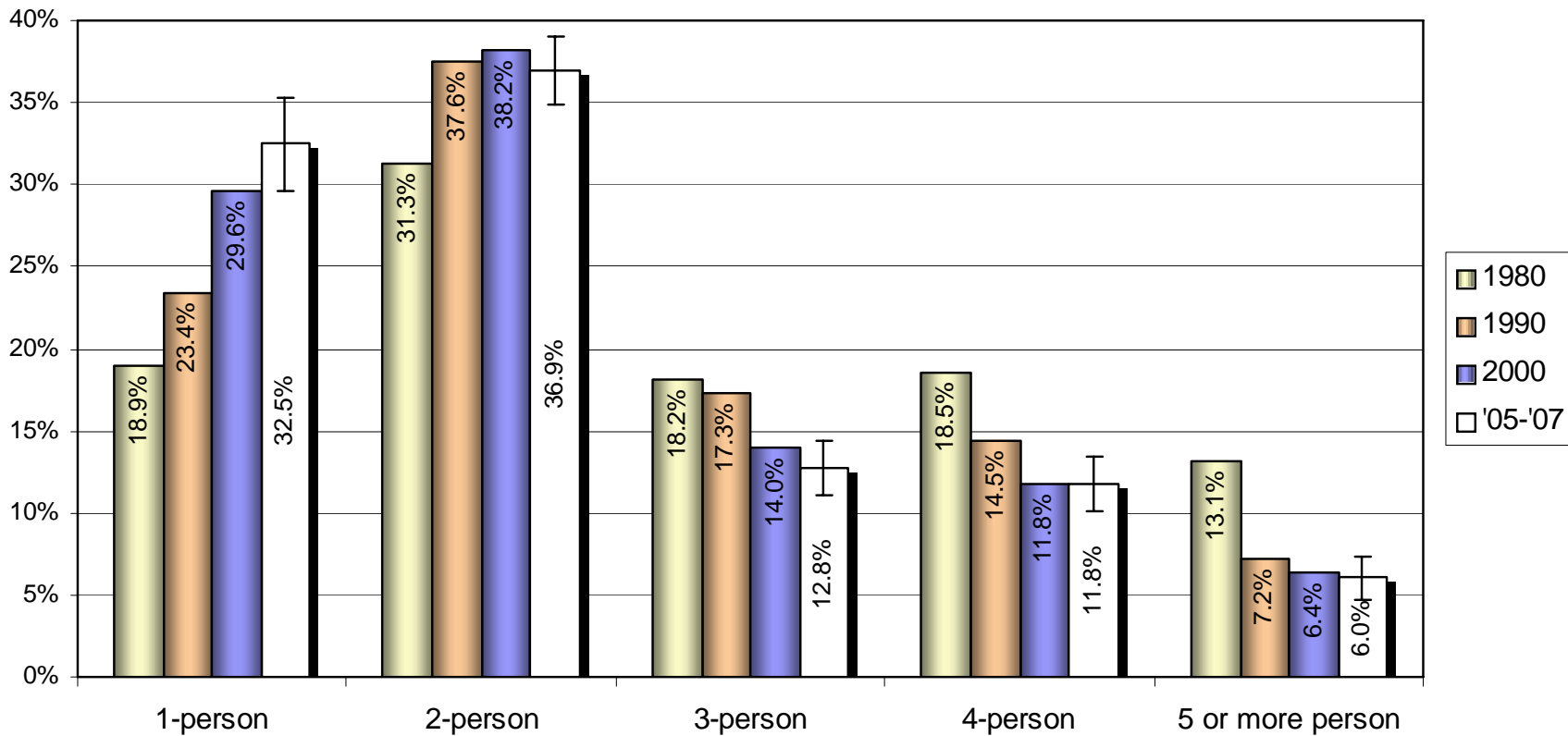
# Median age by race/ethnicity



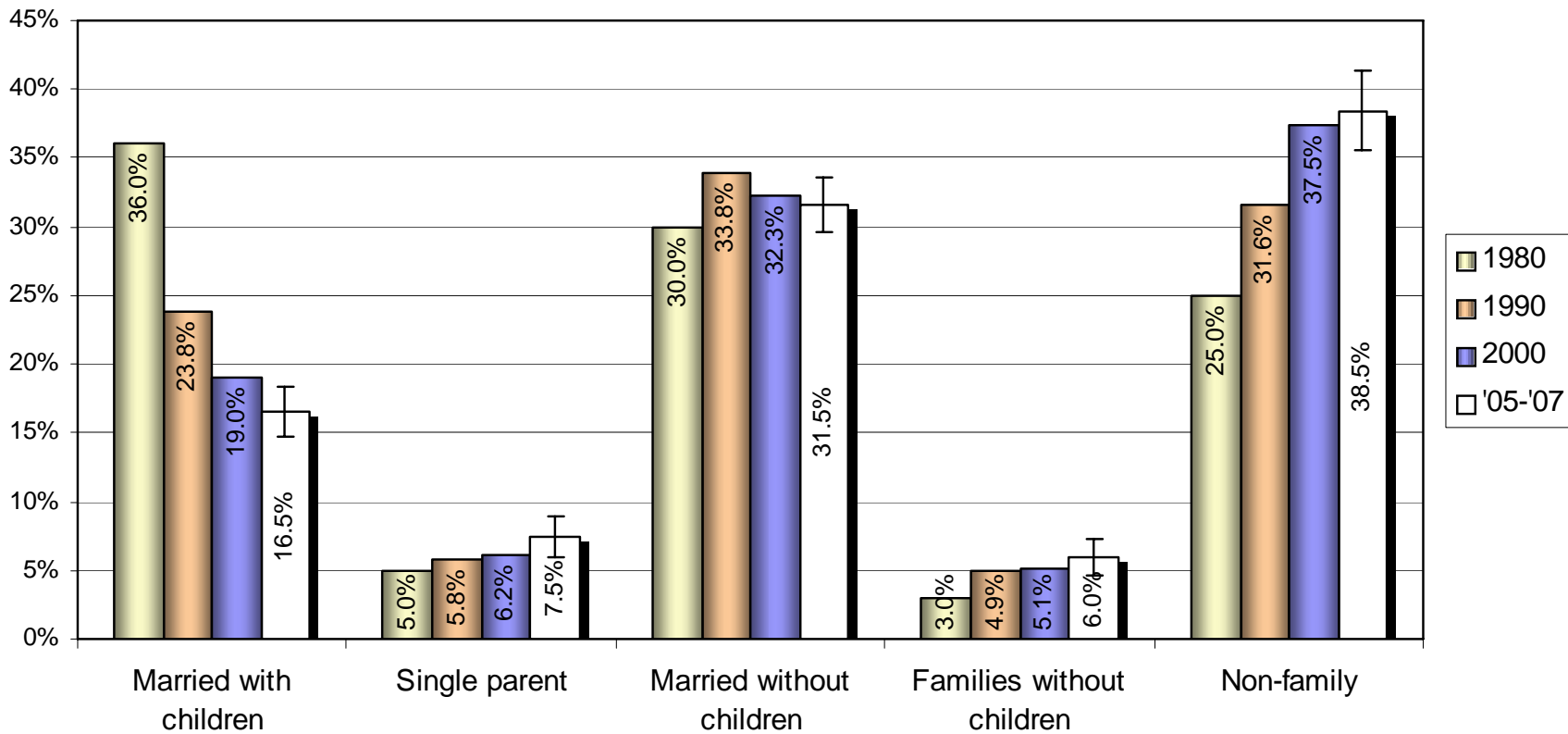
# Average household size



# Household size

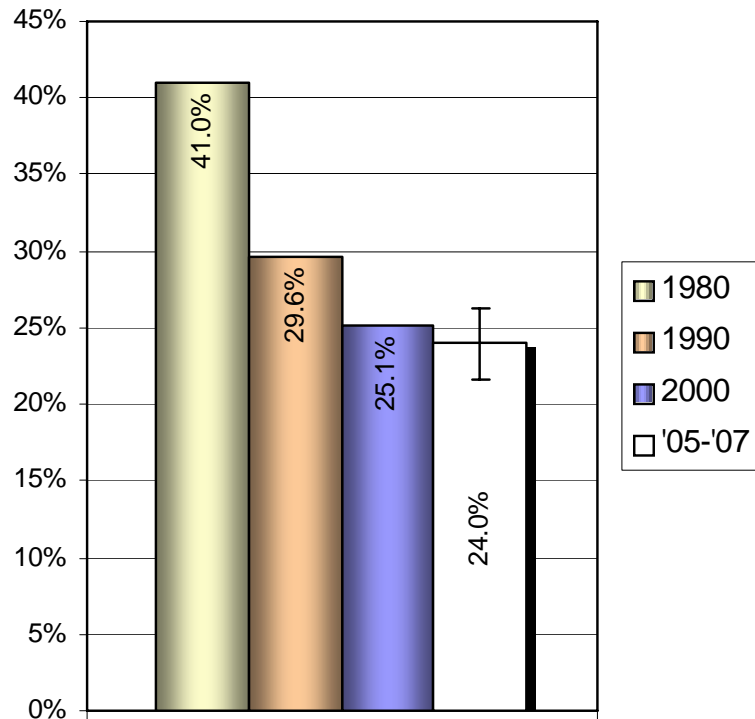


# Household types

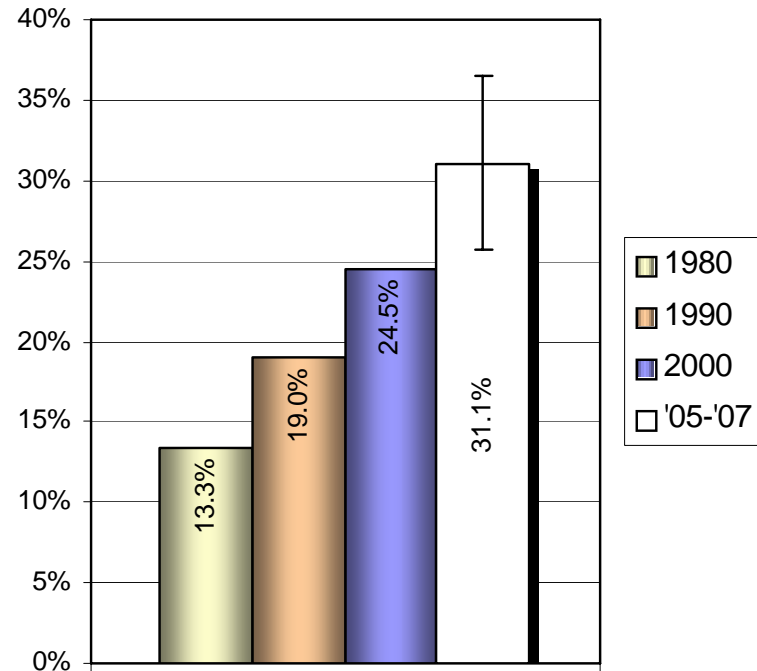


# Household types (cont.)

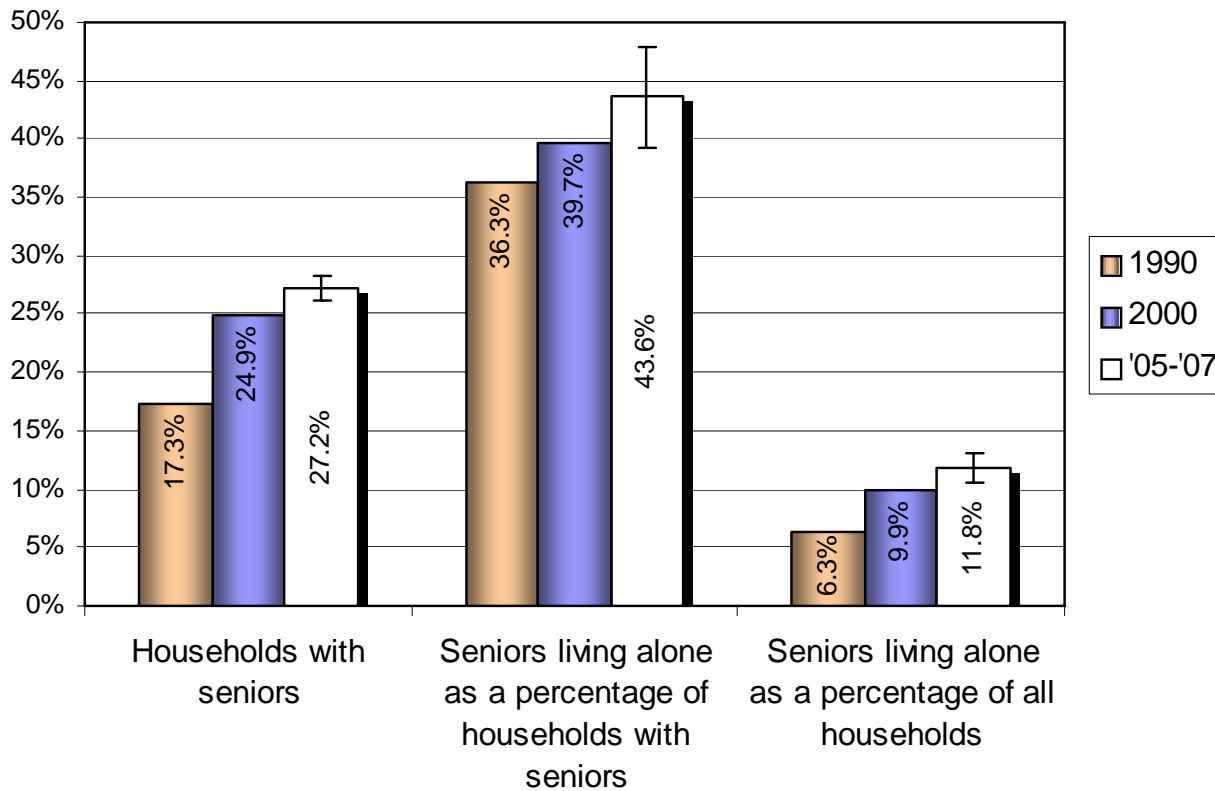
## Households with own children



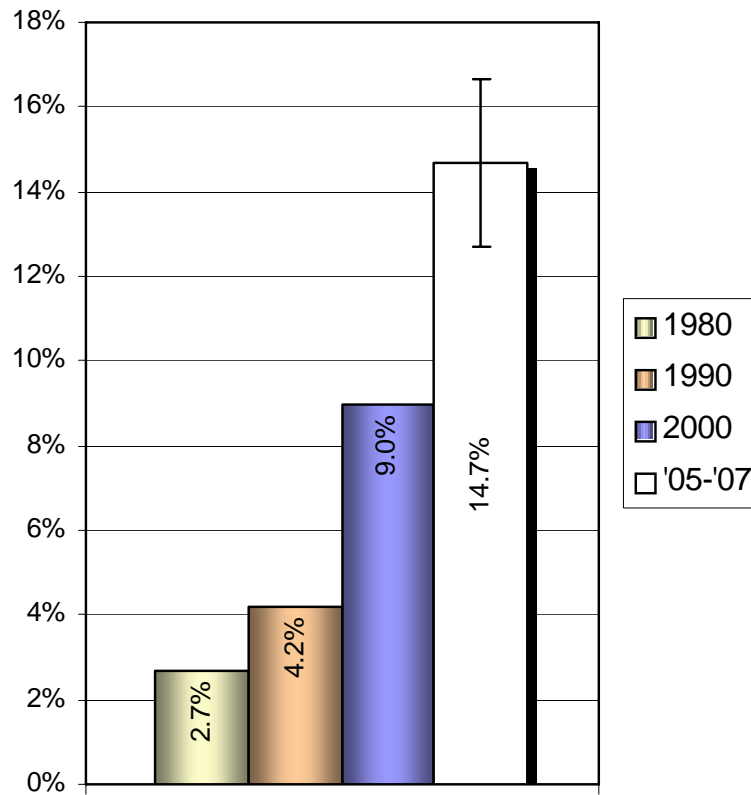
## Single parents as a percentage of families with children



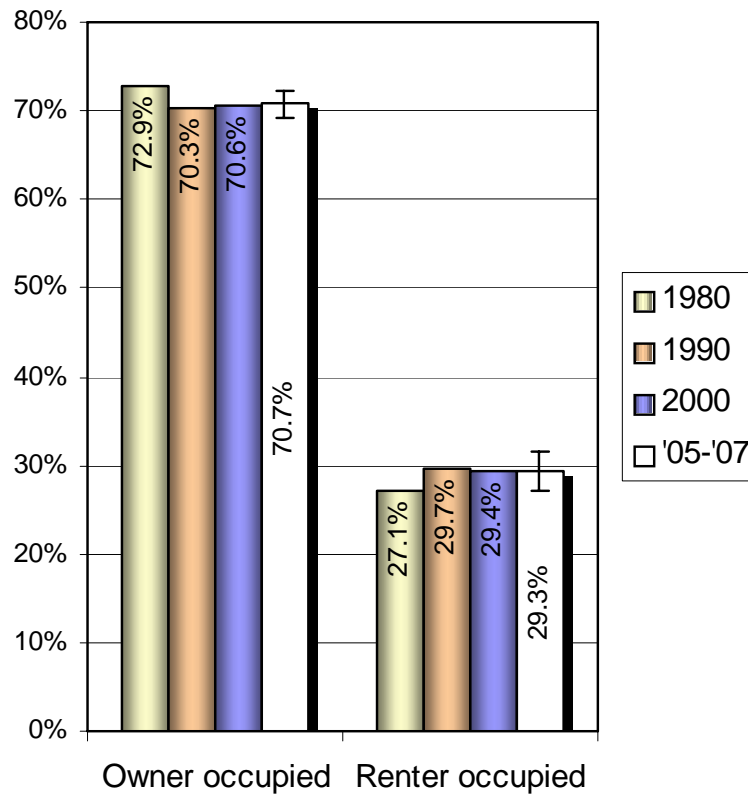
# Households with seniors



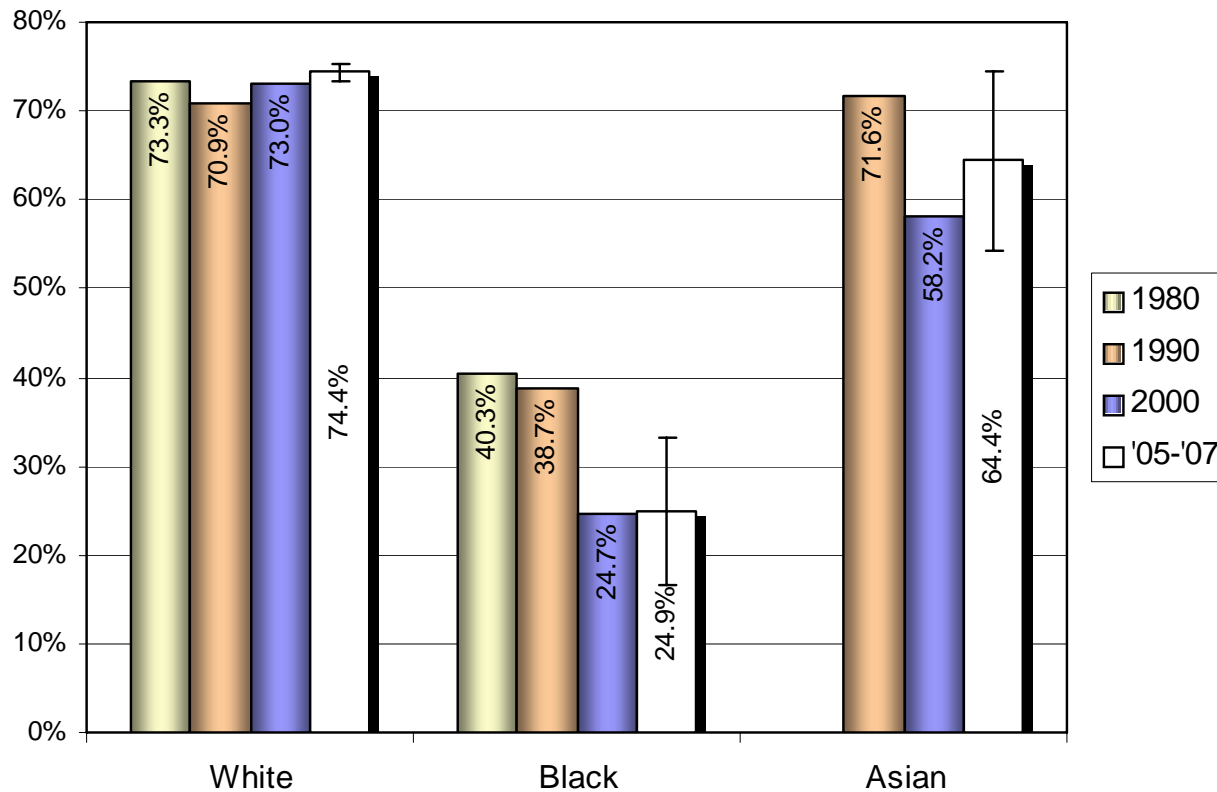
# Householders of color



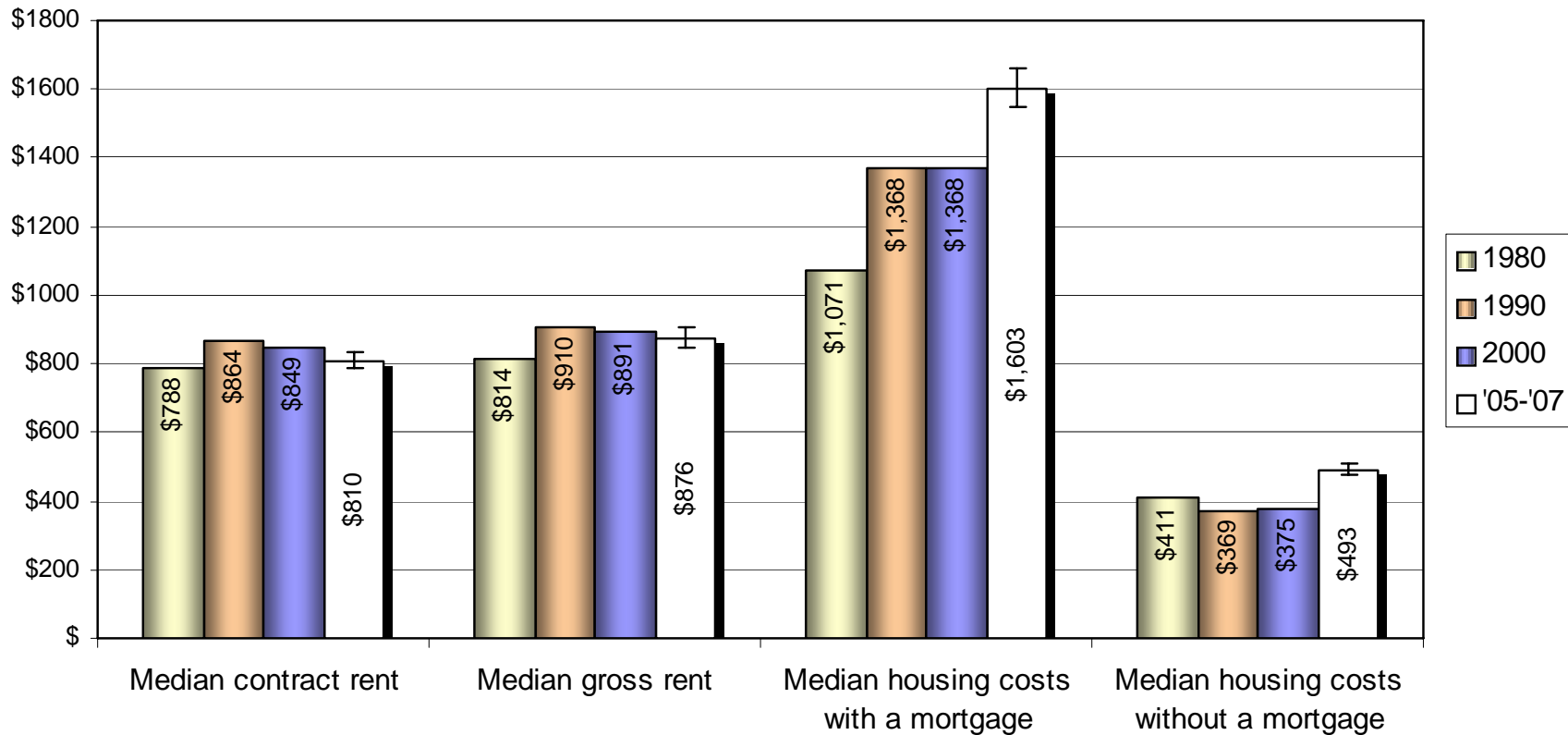
# Occupancy in housing units



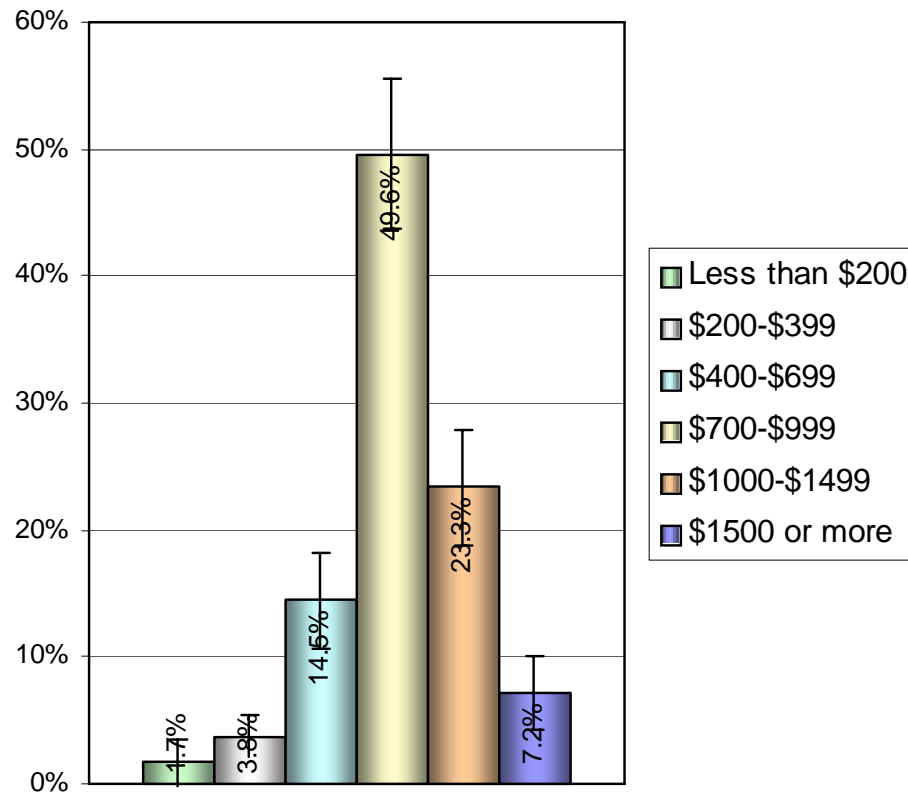
# Owner occupancy rates by race of householder



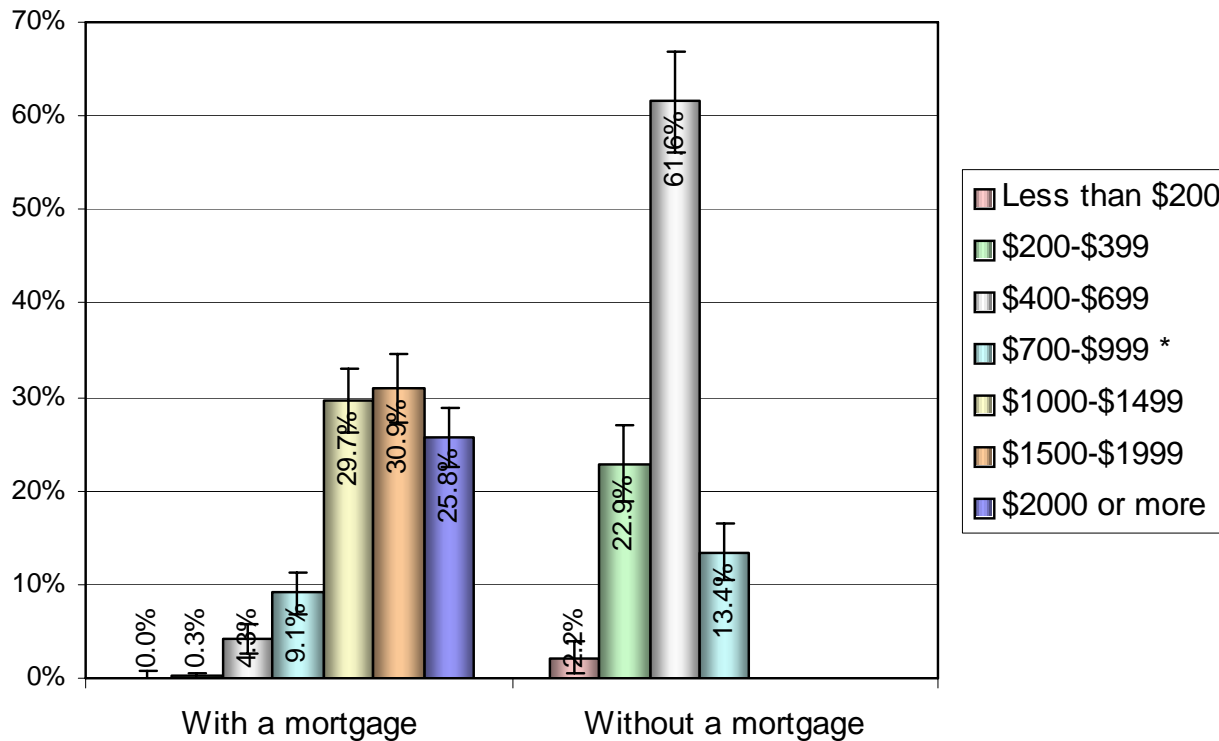
# Median housing costs (in 2007 dollars)



# Gross rent in 2005-2007 (in 2007 dollars)

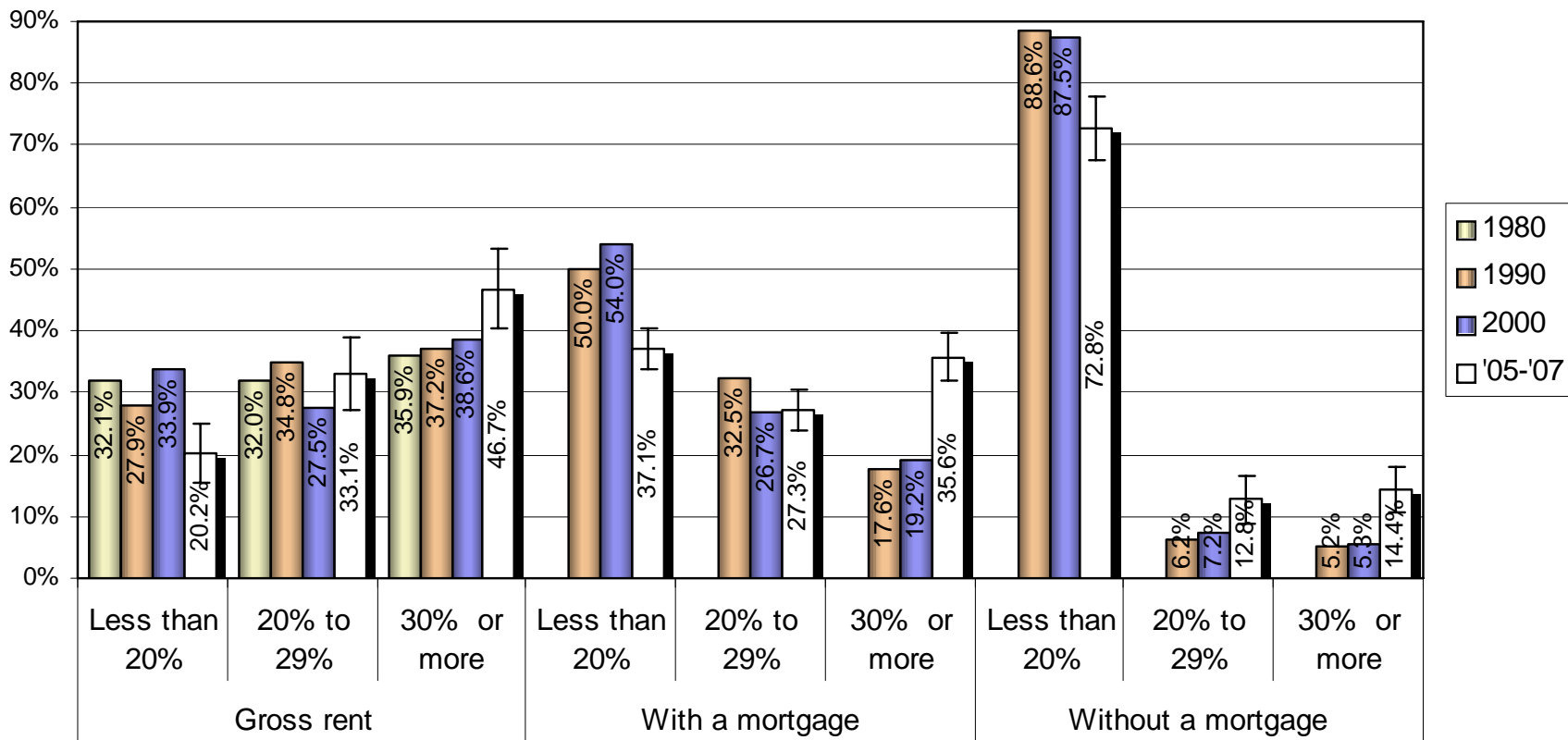


# Homeowners' costs in 2005-2007 (in 2007 dollars)

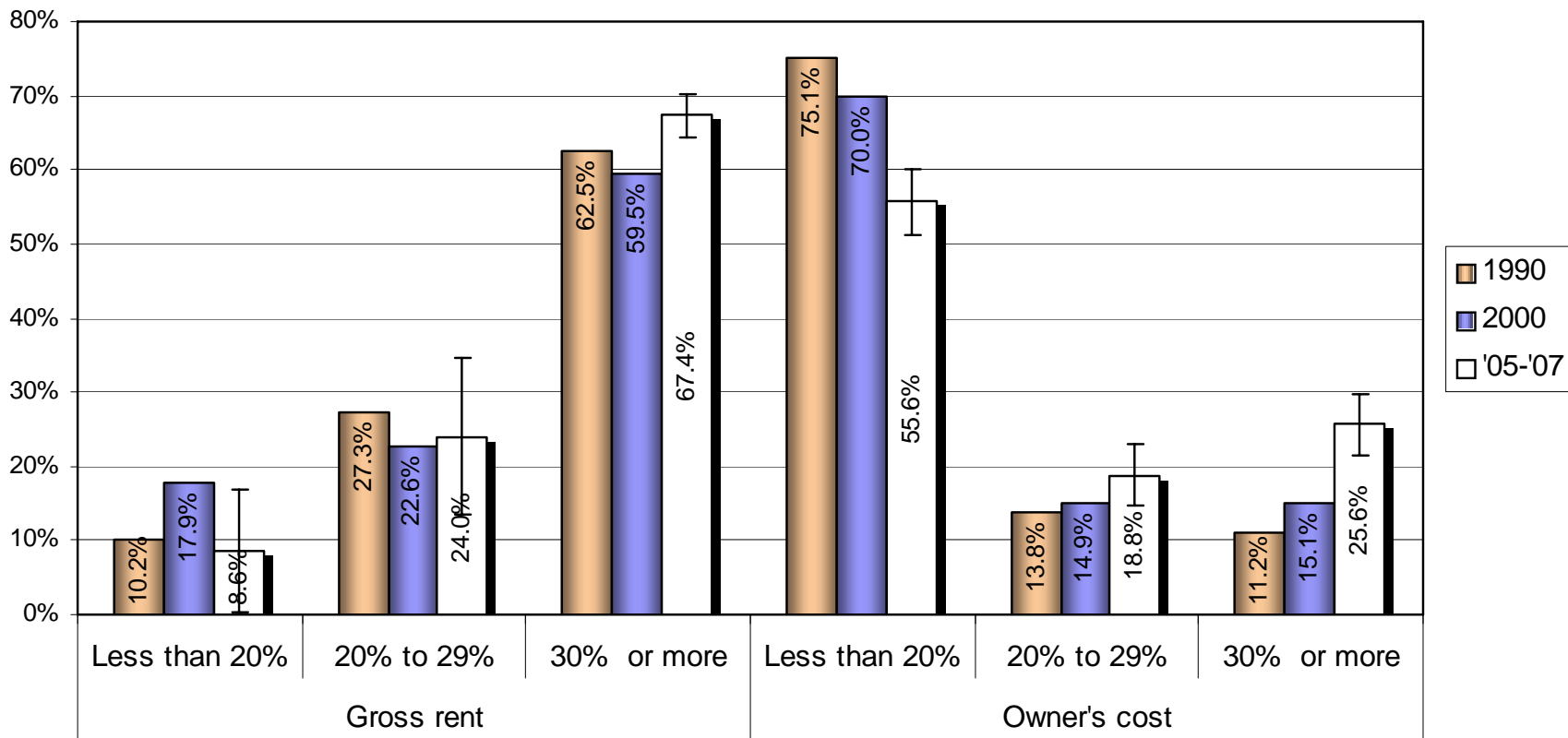


\* \$700 or more for "Without a mortgage"

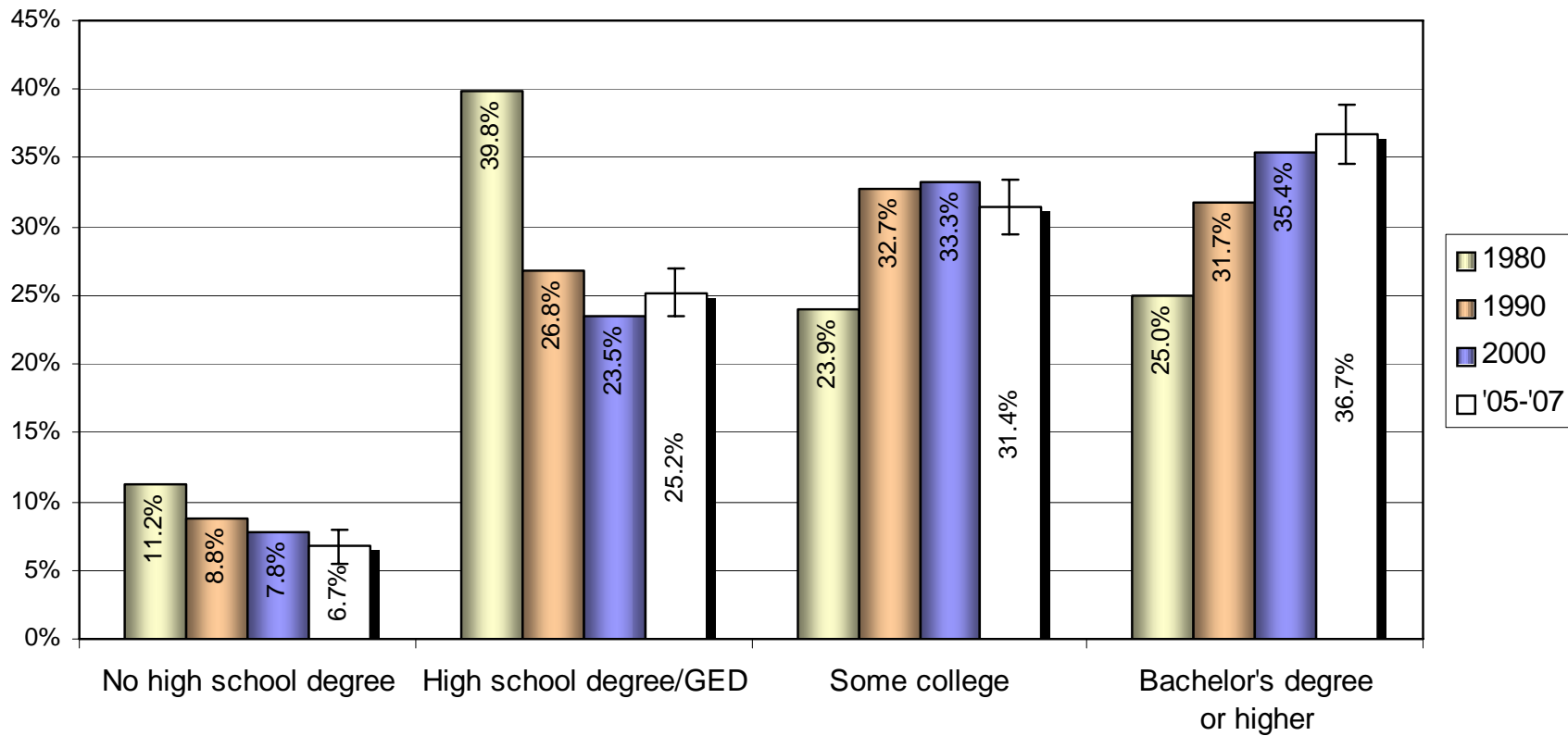
# Housing costs as percentage of household income



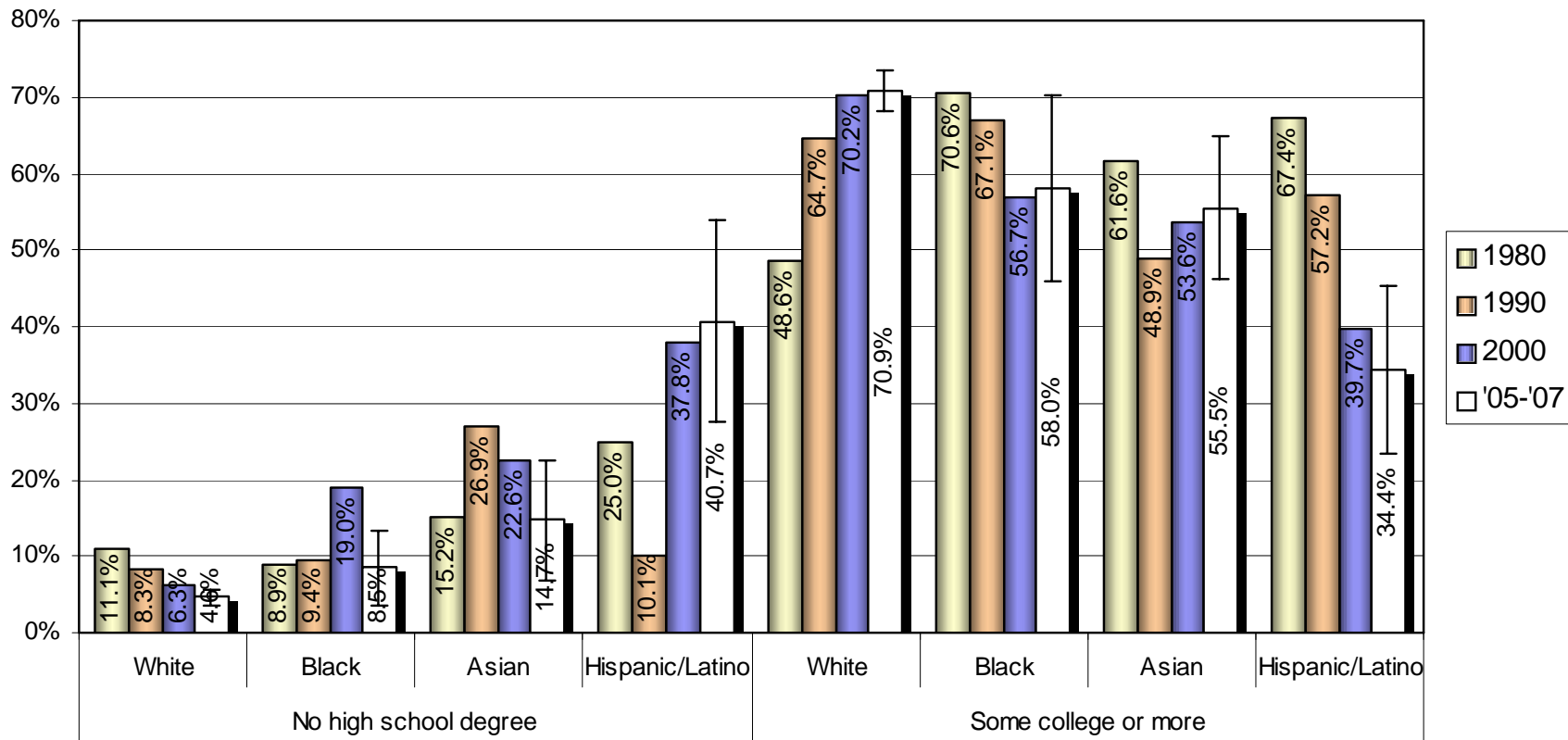
# Housing costs as percentage of household income for Seniors



# Educational attainment

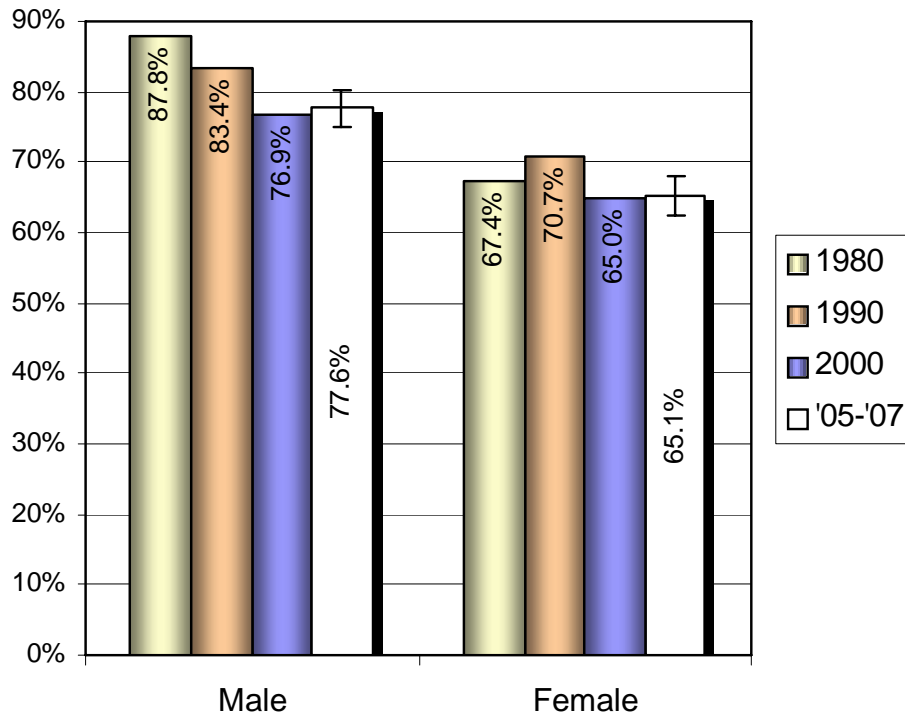


# Educational attainment by Race/Ethnicity

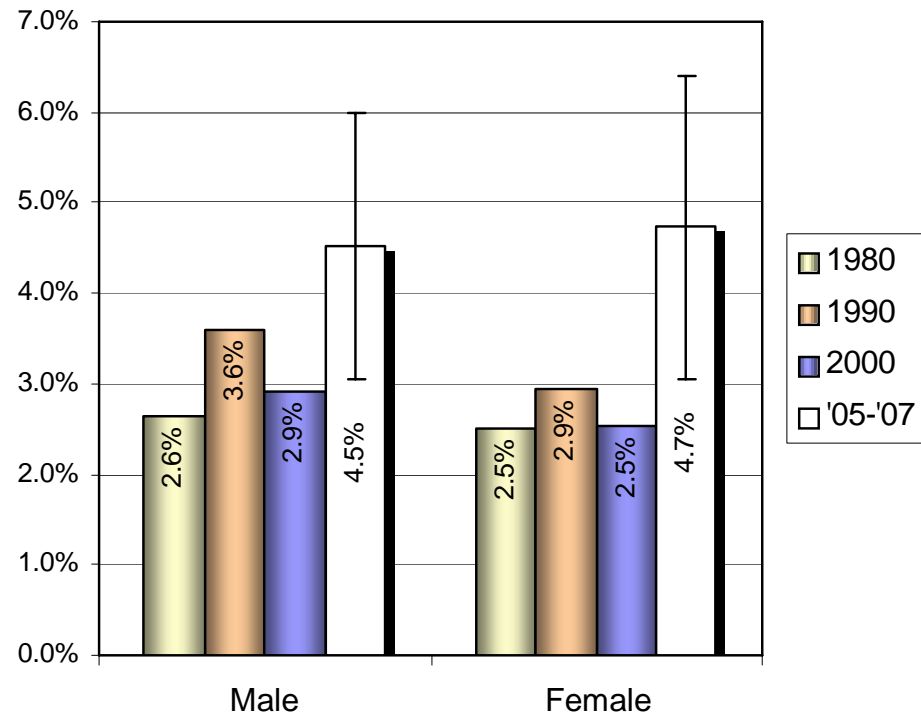


# Labor force participation and unemployment by gender

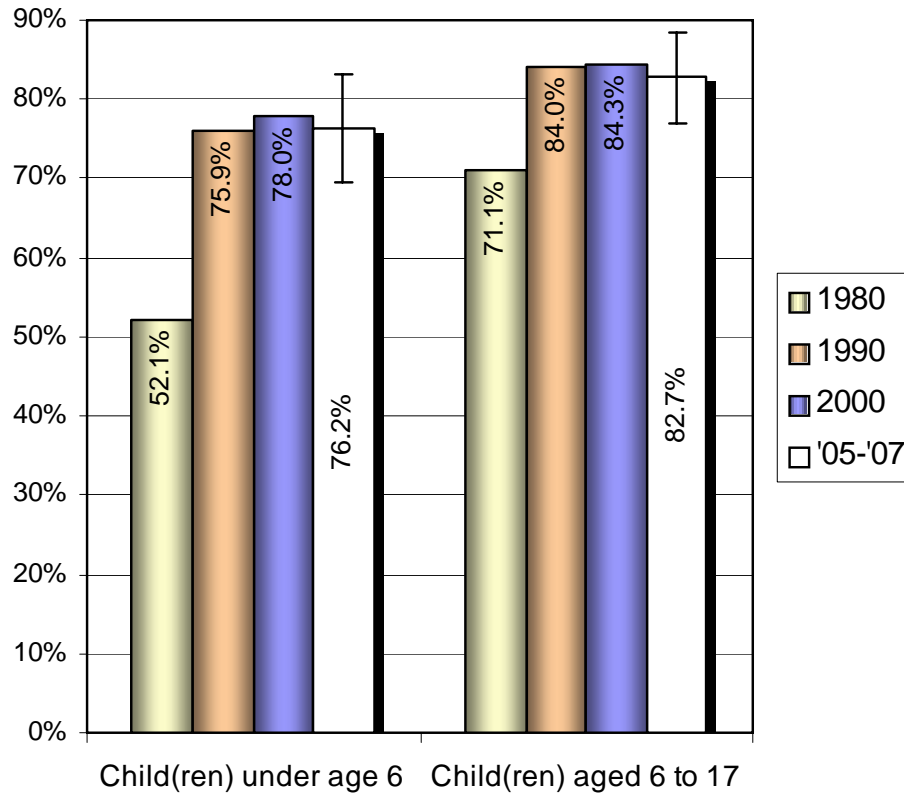
## Labor force participation



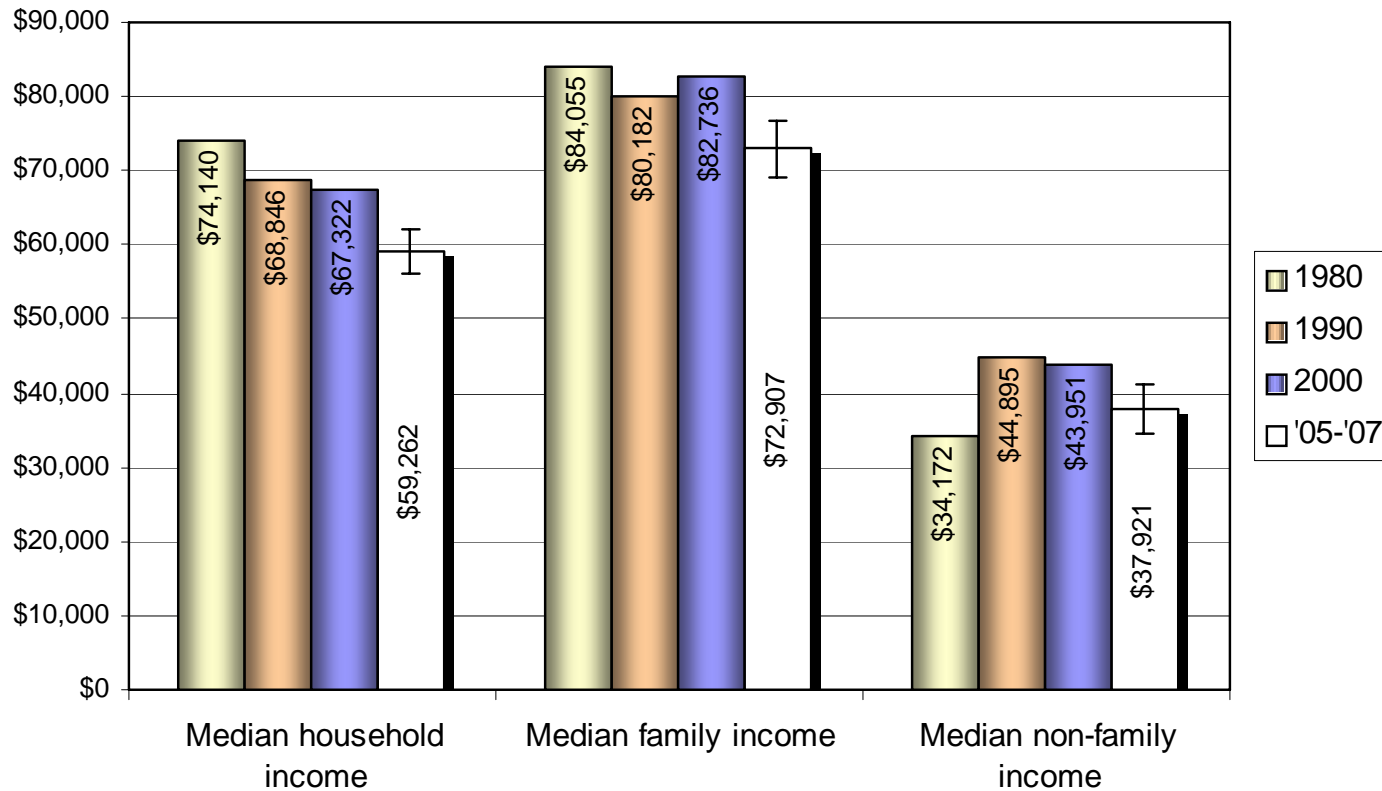
## Unemployment



# Labor force participation of women with children

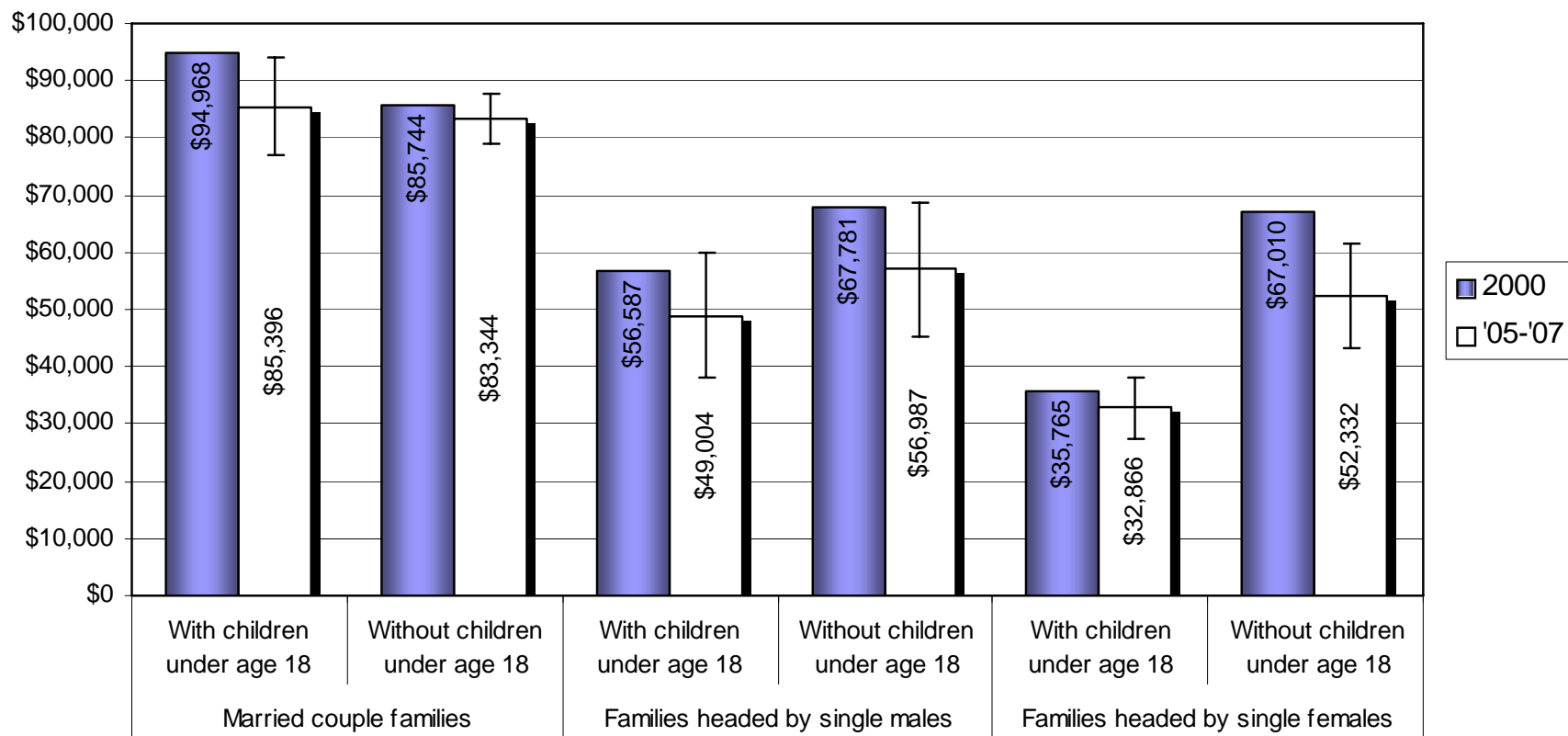


# Median household, family, and non-family income (in 2007 dollars)

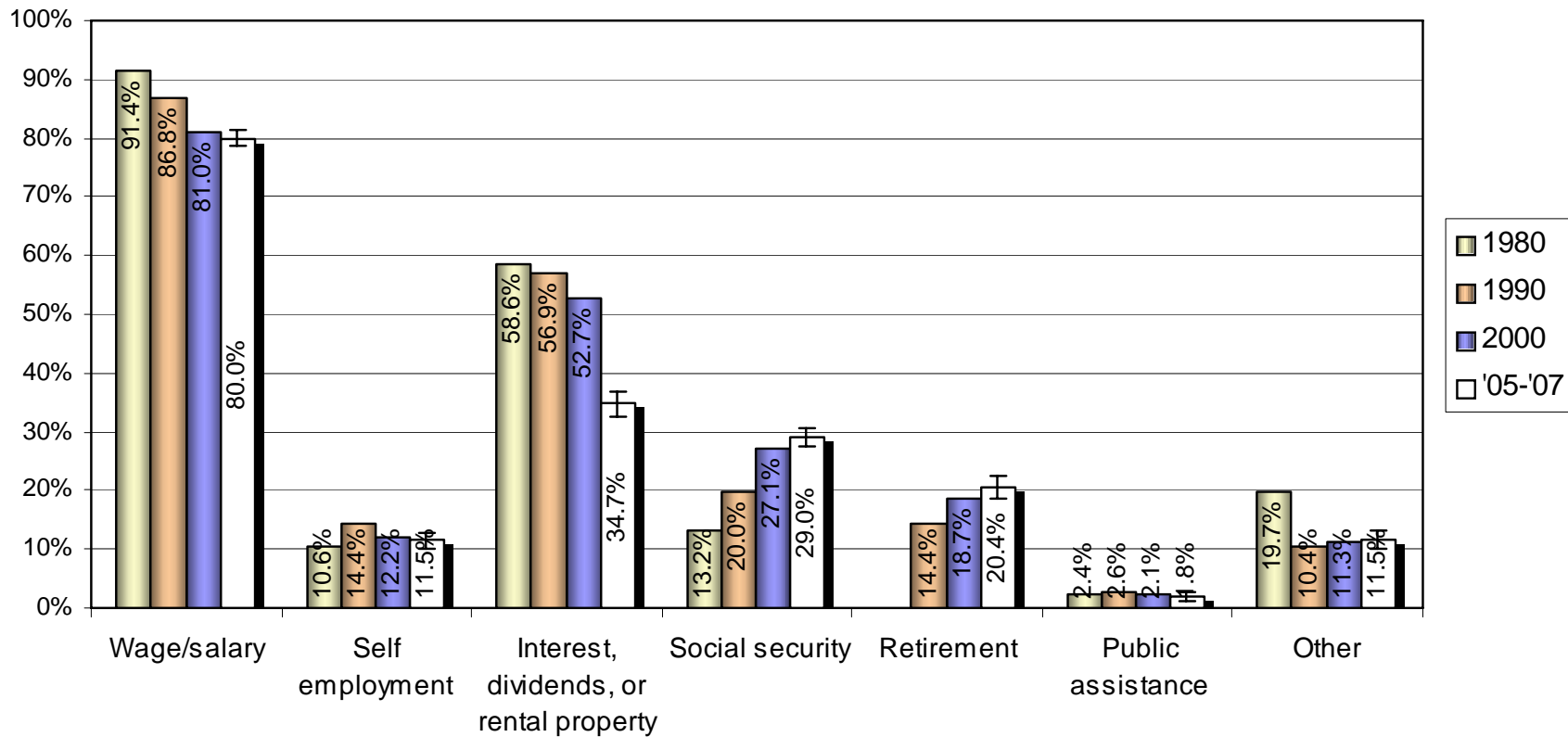


# Median family income by family type

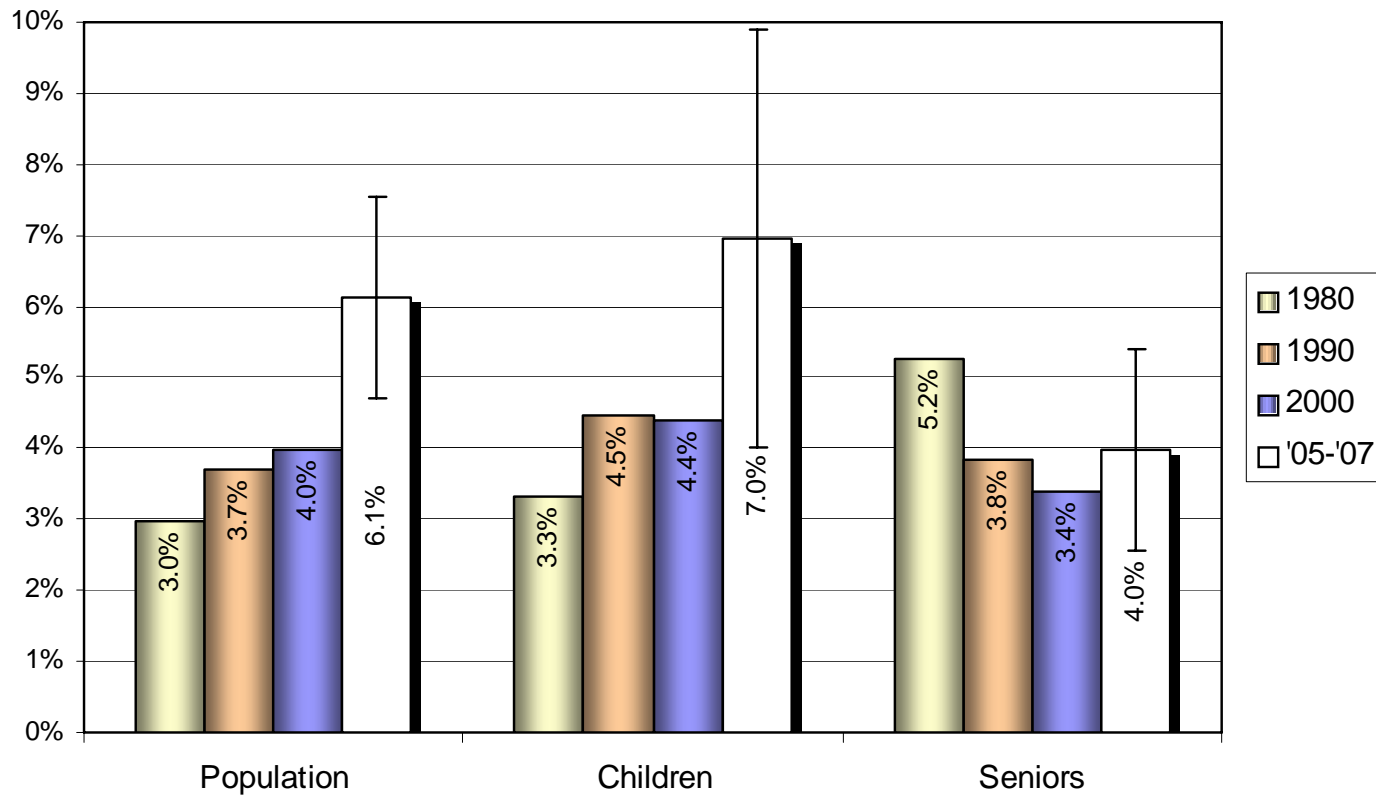
(in 2007 dollars)



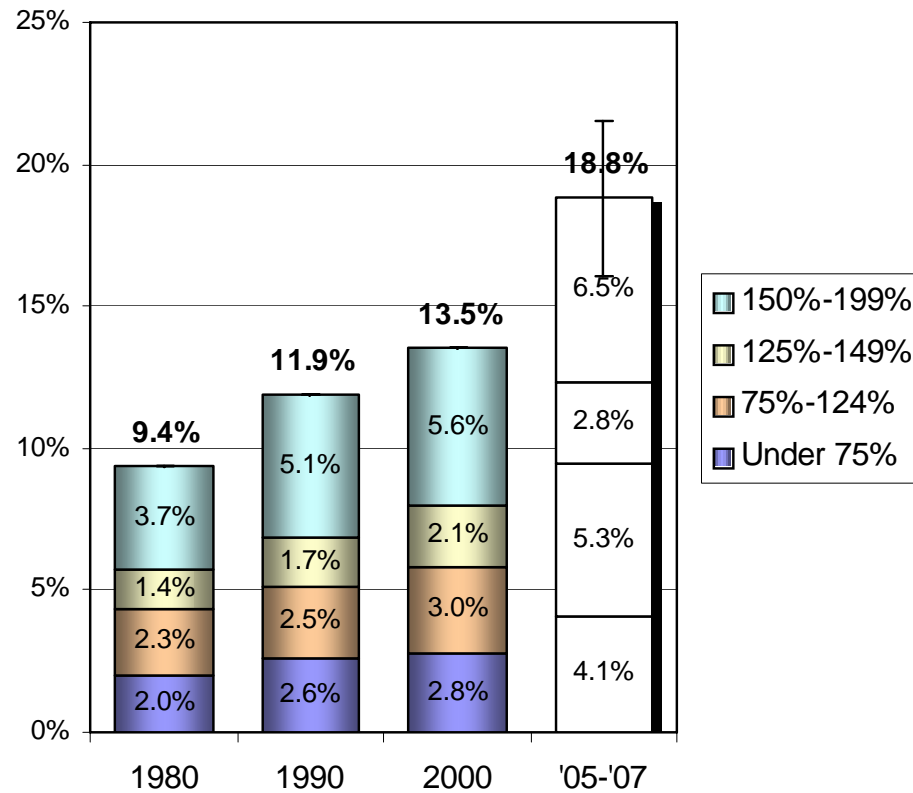
# Sources of household income



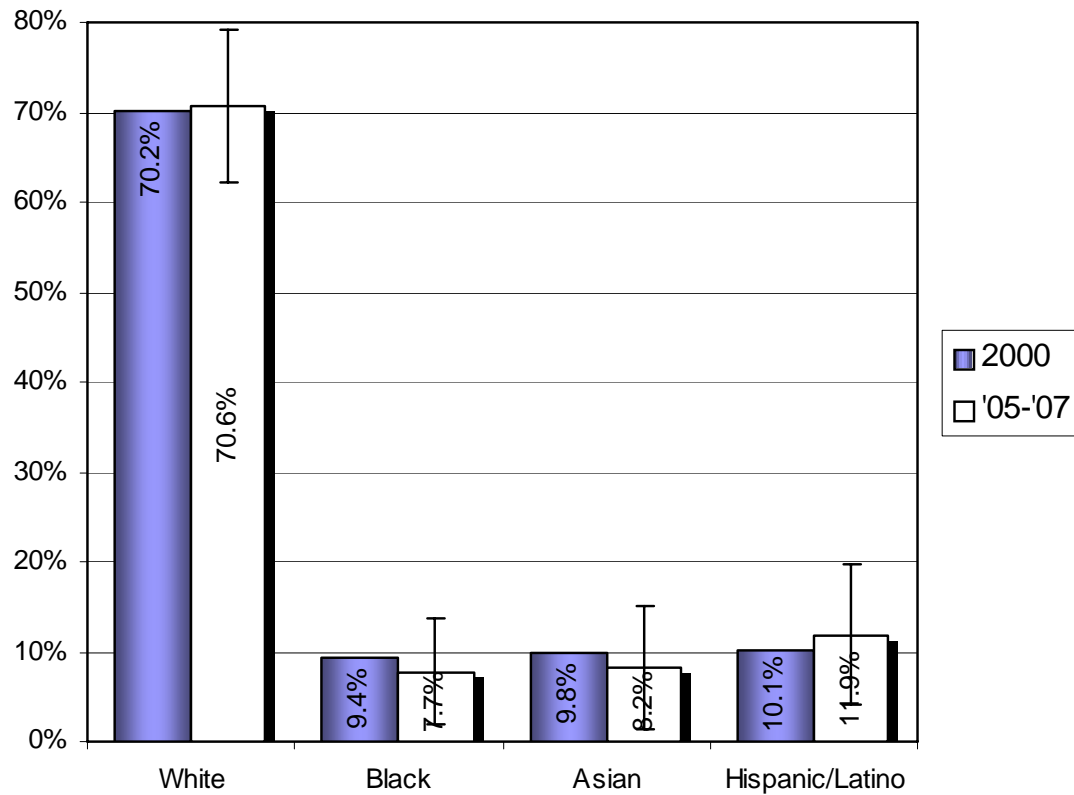
# Population, children, and seniors in poverty



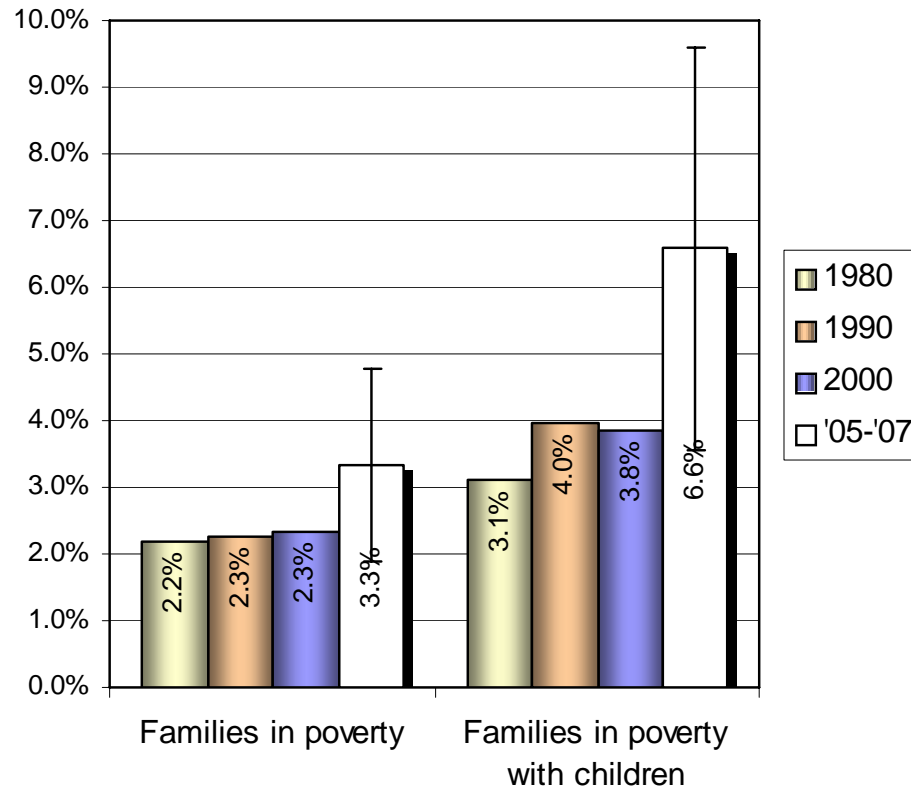
# Population below 200% of poverty



# Race/Ethnicity of population in poverty



# Families in poverty





# Things to “take away”

---

1. The total population and number of households and families are now decreasing and the population is becoming more diverse – substantial increases in the population of color and the foreign-born population.
2. The population is becoming older – steadily increasing portion of seniors and generally decreasing portion of children.
3. The portions of smaller households (1- and 2-person) are generally increasing – significant increases in non-family households and decreases in households with children (except single parent households).
4. Households with seniors and seniors living alone are becoming larger portions of all households.



## Things to “take away” (cont.)

---

5. There is a significant difference in portions and trends of owner occupancy rates by racial group – may be affected by substantially increasing mortgage costs.
6. Increasing portions of all householders (both renters and owners) are “cost burdened” – especially seniors who rent.
7. Although decreasing portions of the overall population have not attained at least a high school degree, there is a significant increase in the Hispanic/Latino population.
8. Males have a decreasing (although still high) rate of labor force participation while women with children have a generally increasing rate.



## Things to “take away” (cont.)

---

9. Median incomes for households and families are generally steadily decreasing while income for non-families increased from 1980 to 2000 but decreased in 2005-2007.
10. From 1980 to 2000, the portions of the total population and children living in poverty increased while the portion of seniors decreased – in 2005-2007, the portions of the total population and children continued to increase and the portion of seniors likely increased from 2000 levels.
11. The population living below 200% of poverty has steadily increased over the past 27 years.
12. The portion of families in poverty generally increased from 1980 to 2000 and most likely increased again in 2005-2007.



# Contact information

---

**Daryl Coppoletti**

**Regional Planning Coordinator**

**Hennepin South Services Collaborative**

952-922-5999 ex. 12

[daryl.coppoletti@hsscmn.org](mailto:daryl.coppoletti@hsscmn.org)

[www.hsscmn.org](http://www.hsscmn.org)